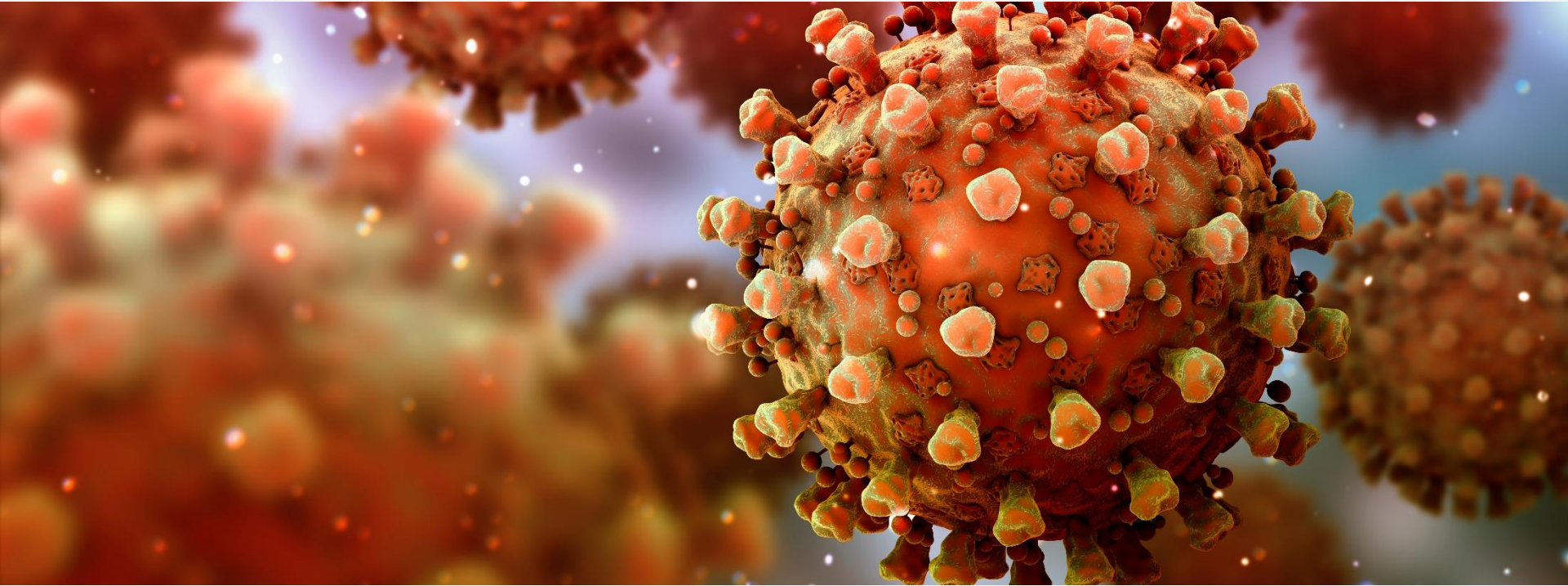


A very strong majority of Canadians are good with requiring everyone to wear a mask in indoor public places

National survey released July 2020

Project 2020-1685B



THE GLOBE AND MAIL 

 **NANOS**

A very strong majority of Canadians say they would support or somewhat support requiring everyone to wear a mask in indoor public spaces, and a strong majority would support or somewhat support closing all essential businesses and asking Canadians to self-isolate if there is a resurgence of COVID-19. A majority of Canadians say it is important or somewhat important for provinces to find a way to open schools for in-person schooling in the fall.

A strong majority of Canadians say it is important or somewhat important for provinces to find a way to open schools for in-person schooling in the fall

- **Close to eight in ten Canadians say it is important or somewhat important for provinces to find a way to open schools for in-person schooling in the fall** – A strong majority of Canadians say it is important (45%) or somewhat important (33%) for provinces to find a way to open schools for in-person schooling this fall, while just under two in ten say this is somewhat not important (11%) or not important (eight per cent). Three per cent are unsure.
- **A strong majority of Canadians say they would support or somewhat support closing all essential businesses and asking Canadians to self-isolate if there is a resurgence of COVID-19** – More than seven in ten Canadians say they would support (50%) or somewhat support (23%) closing all but essential businesses and asking people to self-isolate at home if there is a resurgence of COVID-19, while one in four would somewhat oppose (12%) or oppose this (13%). Two per cent are unsure. Residents of Ontario (63%) and Atlantic Canada (62%) have a higher level of support for this than residents of the Prairies (38%) or Quebec (30%).
- **Just over six in ten Canadians say the opening of more businesses and relaxing of some social distance measures has made them more worried or somewhat more worried about contracting COVID-19** – A majority of Canadians say they are more worried (19%) or somewhat more worried about contracting COVID-19 (42%) because of the opening of more businesses and relaxing of some social distancing measures. Twenty-five per cent say it made no difference and under two in ten say this has made them less worried (six per cent) or somewhat less worried (eight per cent) about contracting COVID-19. Residents of British Columbia (25%) and Ontario (23%) are more likely to say this has made them more worried than residents of Atlantic Canada (13%) or Quebec (12%).



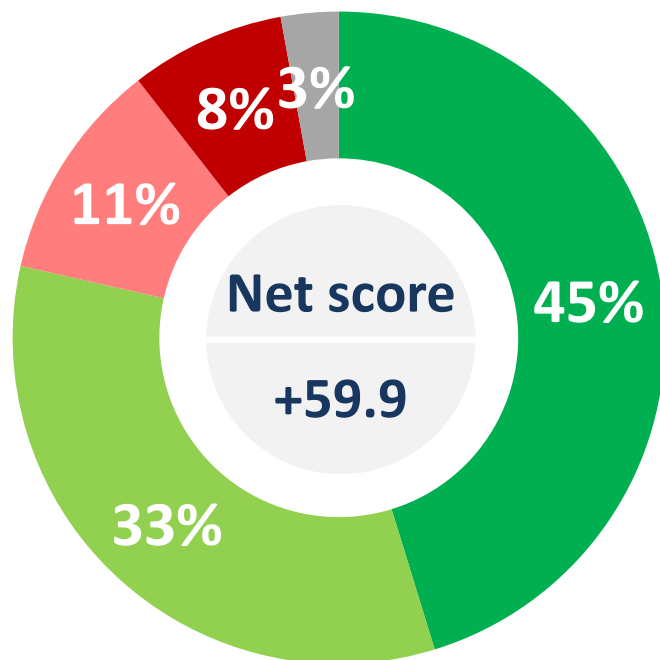
Close to nine in ten Canadians say they would support or somewhat support requiring everyone to wear a mask in indoor public spaces

- **A very strong majority of Canadians say they would support or somewhat support requiring everyone to wear a mask in indoor public spaces** – Close to nine in ten Canadians say they would support (72%) or somewhat support (15%) requiring everyone to wear a mask in indoor public places, while just over one in ten would oppose this (eight per cent) or somewhat oppose this (four per cent). Two per cent are unsure. Ontario residents have a higher level of support for this (82%) than residents of British Columbia (64%), Atlantic Canada (62%) and the Prairies (61%).

Nanos conducted an RDD dual frame (land- and cell-lines) hybrid telephone and online random survey of 1,094 Canadians, 18 years of age or older, between July 26th to 30th, 2020 as part of an omnibus survey. Participants were randomly recruited by telephone using live agents and administered a survey online. The results were statistically checked and weighted by age and gender using the latest Census information and the sample is geographically stratified to be representative of Canada. The margin of error for this survey is ± 3.0 percentage points, 19 times out of 20.

This study was commissioned by the Globe and Mail and the research was conducted by Nanos Research

Importance of opening schools this Fall



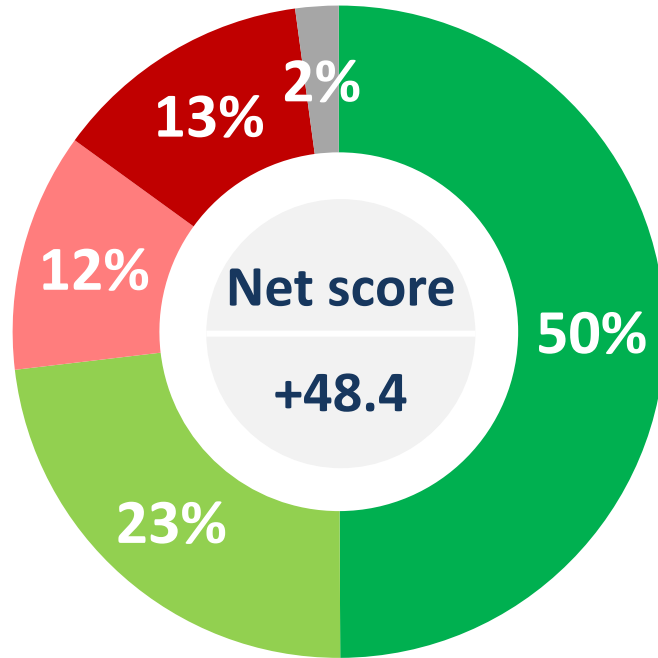
■ Important ■ Somewhat important ■ Somewhat unimportant
■ Unimportant ■ Unsure

	Important/ somewhat important
Atlantic (n=105)	73.5%
Quebec (n=251)	85.3%
Ontario (n=364)	79.1%
Prairies (n=216)	80.3%
British Columbia (n=158)	65.2%
Male (n=557)	79.3%
Female (n=537)	77.8%
18 to 34 (n=277)	73.6%
35 to 54 (n=433)	76.9%
55 plus (n=384)	83.4%

*Weighted to the true population proportion.
 *Charts may not add up to 100 due to rounding.

QUESTION – Is it important, somewhat important, somewhat not important or not important for provinces to find a way to open schools for in-person schooling this Fall?

Support for closing businesses in case of COVID-19 resurgence



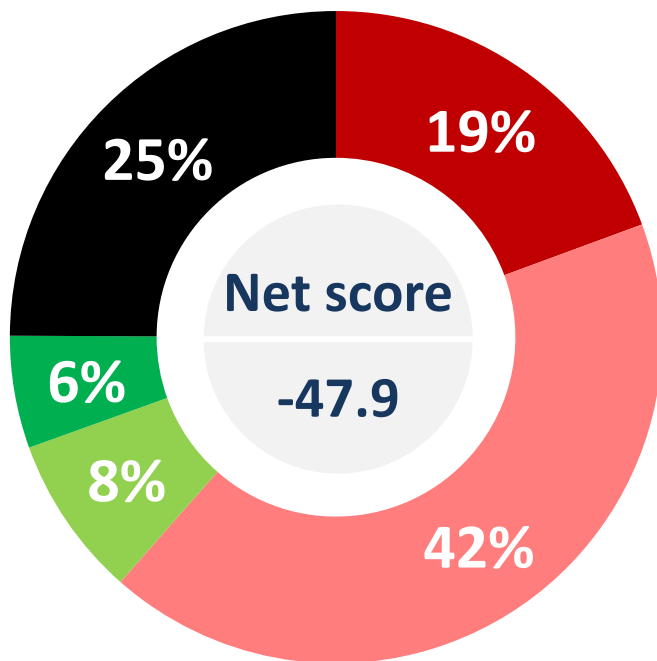
■ Support ■ Somewhat support ■ Somewhat oppose ■ Oppose ■ Unsure

	Support/ somewhat support
Atlantic (n=105)	84.1%
Quebec (n=251)	55.7%
Ontario (n=364)	83.2%
Prairies (n=216)	66.6%
British Columbia (n=158)	78.2%
Male (n=557)	70.3%
Female (n=537)	75.8%
18 to 34 (n=277)	73.9%
35 to 54 (n=433)	74.4%
55 plus (n=384)	71.4%

*Weighted to the true population proportion.
*Charts may not add up to 100 due to rounding.

QUESTION – Would you support, somewhat support, somewhat oppose or oppose closing all but essential businesses and asking people to self-isolate at home if there is a resurgence of COVID-19?

Worry about contracting COVID-19 since relaxing of social distancing rules



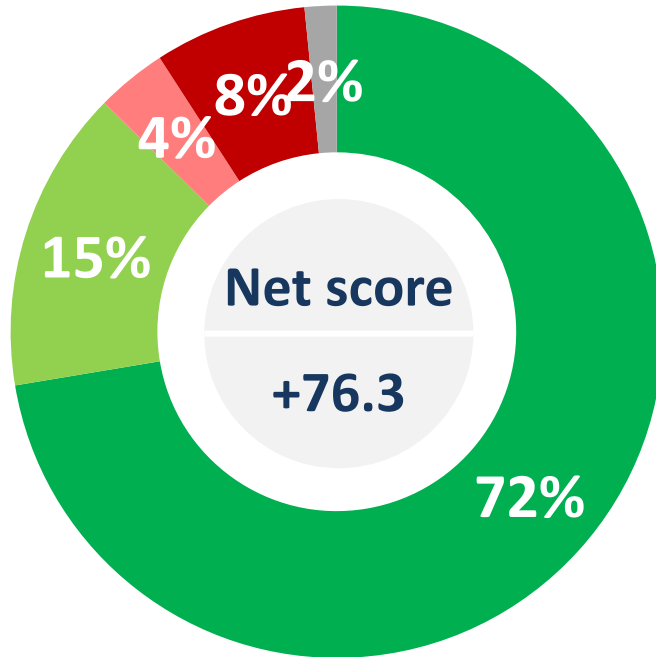
- More worried
- Somewhat more worried
- Somewhat less worried
- Less worried
- No difference

QUESTION – Has the opening of more businesses and the relaxing of some social distancing measures made you more worried, somewhat more worried, somewhat less worried or less worried about contracting COVID-19 or has it made no difference?

	More worried/ somewhat more worried
Atlantic (n=105)	53.6%
Quebec (n=251)	51.9%
Ontario (n=364)	69.1%
Prairies (n=216)	53.9%
British Columbia (n=158)	70.8%
Male (n=557)	57.7%
Female (n=537)	65.1%
18 to 34 (n=277)	58.2%
35 to 54 (n=433)	59.6%
55 plus (n=384)	65.5%

*Weighted to the true population proportion.
*Charts may not add up to 100 due to rounding.

Support for requiring masks in indoor public spaces



■ Support ■ Somewhat support ■ Somewhat oppose ■ Oppose ■ Unsure

	Support/ somewhat support
Atlantic (n=105)	81.6%
Quebec (n=251)	88.5%
Ontario (n=364)	91.7%
Prairies (n=216)	79.7%
British Columbia (n=158)	86.3%
Male (n=557)	83.9%
Female (n=537)	90.7%
18 to 34 (n=277)	81.9%
35 to 54 (n=433)	87.6%
55 plus (n=384)	91.0%

*Weighted to the true population proportion.
*Charts may not add up to 100 due to rounding.

QUESTION – Would you support, somewhat support, somewhat oppose or oppose requiring everyone to wear a mask in indoor public places?



Nanos conducted an RDD dual frame (land- and cell-lines) hybrid telephone and online random survey of 1,094 Canadians, 18 years of age or older, between July 26th and 30th, 2020 as part of an omnibus survey. Participants were randomly recruited by telephone using live agents and administered a survey online. The sample included both land- and cell-lines across Canada. The results were statistically checked and weighted by age and gender using the latest Census information and the sample is geographically stratified to be representative of Canada.

Individuals randomly called using random digit dialling with a maximum of five call backs.

The margin of error for this survey is ± 3.0 percentage points, 19 times out of 20.

This study was commissioned by the Globe and Mail and the research was conducted by Nanos Research.

Note: Charts may not add up to 100 due to rounding.

Element	Description
Research sponsor	The Globe and Mail
Population and Final Sample Size	1094 Randomly selected individuals.
Source of Sample	Nanos Hybrid Probability Panel (confirm with John)
Type of Sample	Probability
Margin of Error	±3.0 percentage points, 19 times out of 20.
Mode of Survey	RDD dual frame (land- and cell-lines) hybrid telephone and online omnibus survey
Sampling Method Base	The sample included both land- and cell-lines RDD (Random Digit Dialed) across Canada.
Demographics (Captured)	Atlantic Canada, Quebec, Ontario, Prairies, British Columbia; Men and Women; 18 years and older. Six digit postal code was used to validate geography.
Fieldwork/Validation	Individuals were recruited using live interviews with live supervision to validate work, the research questions were administered online
Number of Calls	Maximum of five call backs to those recruited.
Time of Calls	Individuals recruited were called between 12-5:30 pm and 6:30-9:30pm local time for the respondent.
Field Dates	July 26 th to 30 th , 2020
Language of Survey	The survey was conducted in both English and French.
Standards	Nanos Research is a member of the Canadian Research Insights Council (CRIC) and confirms that this research fully complies with all CRIC Standards including the CRIC Public Opinion Research Standards and Disclosure Requirements. https://canadianresearchinsightscouncil.ca/standards/

Element	Description
Weighting of Data	The results were weighted by age and gender using the latest Census information (2016) and the sample is geographically stratified to ensure a distribution across all regions of Canada. See tables for full weighting disclosure
Screening	Screening ensured potential respondents did not work in the market research industry, in the advertising industry, in the media or a political party prior to administering the survey to ensure the integrity of the data.
Excluded Demographics	Individuals younger than 18 years old; individuals without land or cell lines, and individuals without internet access could not participate.
Stratification	By age and gender using the latest Census information (2016) and the sample is geographically stratified to be representative of Canada. Smaller areas such as Atlantic Canada were marginally oversampled to allow for a minimum regional sample.
Estimated Response Rate	Nine percent, consistent with industry norms.
Question Order	Question order in the preceding report reflects the order in which they appeared in the original questionnaire.
Question Content	Previous content included the WE controversy and US-Canada border issues.
Question Wording	The questions in the preceding report are written exactly as they were asked to individuals.
Research/Data Collection Supplier	Nanos Research
Contact	Contact Nanos Research for more information or with any concerns or questions. http://www.nanos.co Telephone:(613) 234-4666 ext. 237 Email: info@nanosresearch.com.



As one of North America's premier market and public opinion research firms, we put strategic intelligence into the hands of decision makers. The majority of our work is for private sector and public facing organizations and ranges from market studies, managing reputation through to leveraging data intelligence. Nanos Research offers a vertically integrated full service quantitative and qualitative research practice to attain the highest standards and the greatest control over the research process.

www.nanos.co

nanos dimap analytika



This international joint venture between [dimap](http://www.dimap.com) and [Nanos](http://www.nanos.co) brings together top research and data experts from North American and Europe to deliver exceptional data intelligence to clients. The team offers data intelligence services ranging from demographic and sentiment microtargeting; consumer sentiment identification and decision conversion; and, data analytics and profiling for consumer persuasion.

www.nanosdimap.com

NANOS RUTHERFORD MCKAY & Co.

NRM is an affiliate of Nanos Research and Rutherford McKay Associates. Our service offerings are based on decades of professional experience and extensive research and include public acceptance and engagement, communications audits, and narrative development. www.nrmpublicaffairs.com

TABULATIONS

THE GLOBE AND MAIL



NANOS



2020-1685 – Globe and Mail/Nanos Survey – July OMNI – COVID-19 - STAT SHEET

			Region							Gender		Age		
			Canada 2020-07	Atlantic	Quebec	Ontario	Prairies	British Columbia	Male	Female	18 to 34	35 to 54	55 plus	
Question - Is it important, somewhat important, somewhat not important or not important for provinces to find a way to open schools for in-person schooling this Fall?	Total	Unwgt N	1094	105	251	364	216	158	557	537	277	433	384	
		Wgt N	1000	67	233	384	183	133	490	510	273	341	386	
	Important	%	45.2	40.7	42.5	48.2	47.7	40.4	44.3	46.1	39.5	47.5	47.3	
	Somewhat important	%	33.3	32.8	42.8	30.9	32.6	24.7	35.0	31.7	34.1	29.4	36.1	
	Somewhat not important	%	10.9	10.9	8.3	8.9	12.3	19.3	10.3	11.5	14.4	11.1	8.3	
	Not important	%	7.7	13.6	3.5	9.0	5.9	10.6	8.3	7.1	9.6	8.6	5.5	
	Unsure	%	2.9	1.9	2.9	2.9	1.5	4.9	2.0	3.7	2.4	3.3	2.8	

			Region							Gender		Age		
			Canada 2020-07	Atlantic	Quebec	Ontario	Prairies	British Columbia	Male	Female	18 to 34	35 to 54	55 plus	
Question - Would you support, somewhat support, somewhat oppose or oppose closing all but essential businesses and asking people to self-isolate at home if there is a resurgence of COVID-19?	Total	Unwgt N	1094	105	251	364	216	158	557	537	277	433	384	
		Wgt N	1000	67	233	384	183	133	490	510	273	341	386	
	Support	%	49.9	62.2	30.4	63.3	38.3	55.4	46.3	53.4	53.1	46.9	50.3	
	Somewhat support	%	23.2	21.9	25.2	19.9	28.3	22.8	24.0	22.5	20.8	27.5	21.1	
	Somewhat oppose	%	11.9	7.7	22.5	5.2	14.3	11.2	13.1	10.7	9.0	10.9	14.7	
	Oppose	%	12.9	8.2	17.9	9.5	17.8	9.4	14.8	11.1	15.3	13.7	10.4	
	Unsure	%	2.1	0.0	3.9	2.1	1.3	1.3	1.9	2.4	1.7	0.9	3.5	

Nanos conducted an RDD dual frame (land- and cell- lines) hybrid telephone and online random survey of 1,094 Canadians, 18 years of age or older, between July 26th and 30th, 2020. The margin of error for this survey is ±3.0 percentage points, 19 times out of 20.

2020-1685 – Globe and Mail/Nanos Survey – July OMNI – COVID-19 - STAT SHEET

			Region						Gender		Age		
			Canada 2020-07	Atlantic	Quebec	Ontario	Prairies	British Columbia	Male	Female	18 to 34	35 to 54	55 plus
Question - Has the opening of more businesses and the relaxing of some social distancing measures made you more worried, somewhat more worried, somewhat less worried or less worried about contracting COVID-19 or has it made no difference?	Total	Unwgt N	1094	105	251	364	216	158	557	537	277	433	384
		Wgt N	1000	67	233	384	183	133	490	510	273	341	386
	More worried	%	19.4	12.6	11.8	23.1	19.9	24.8	16.4	22.2	19.9	18.7	19.6
	Somewhat more worried	%	42.1	41.0	40.2	46.0	33.9	46.0	41.3	42.9	38.3	40.9	45.9
	Somewhat less worried	%	8.0	12.2	14.8	5.8	6.9	2.0	7.9	8.1	8.5	7.8	7.8
	Less worried	%	5.6	4.6	5.1	4.4	10.6	3.5	7.3	3.9	4.9	5.9	5.7
Made no difference	%	24.9	29.6	28.2	20.8	28.6	23.8	27.1	22.9	28.4	26.7	20.9	

			Region						Gender		Age		
			Canada 2020-07	Atlantic	Quebec	Ontario	Prairies	British Columbia	Male	Female	18 to 34	35 to 54	55 plus
Question - Would you support, somewhat support, somewhat oppose or oppose requiring everyone to wear a mask in indoor public places?	Total	Unwgt N	1094	105	251	364	216	158	557	537	277	433	384
		Wgt N	1000	67	233	384	183	133	490	510	273	341	386
	Support	%	72.4	62.2	73.6	82.1	60.5	63.6	67.3	77.2	64.7	69.1	80.7
	Somewhat support	%	15.0	19.4	14.9	9.6	19.2	22.8	16.6	13.5	17.2	18.5	10.3
	Somewhat oppose	%	3.5	9.6	4.0	1.9	4.8	2.5	4.4	2.6	3.1	3.7	3.6
	Oppose	%	7.5	7.9	5.4	5.3	13.1	10.0	10.1	5.1	12.5	7.5	4.1
Unsure	%	1.6	0.9	2.1	1.1	2.4	1.3	1.6	1.5	2.4	1.2	1.3	

Nanos conducted an RDD dual frame (land- and cell- lines) hybrid telephone and online random survey of 1,094 Canadians, 18 years of age or older, between July 26th and 30th, 2020. The margin of error for this survey is ± 3.0 percentage points, 19 times out of 20.