

Views of Ontarians on potential policy priorities for the Government of Ontario

Canadian Taxpayers Federation Ontario Survey Summary


submitted by Nanos to the Canadian Taxpayers Federation, February 2017
(Submission 2017-986)



> Majority of Ontarians oppose or somewhat oppose cap and trade policy

Asked their opinion on a series of possible priorities, three out of ten Ontarians believe that reducing the cost of electricity and energy should be the top policy priority for the provincial government compared to five per cent who believe reducing greenhouse gas should be the priority. The majority of Ontarians oppose or somewhat oppose the cap and trade policy and believe that the true cost to the average Ontario household will be more than \$13 per month. Ontario residents have mixed views on whether they believe the new cap and trade policy will reduce climate change, on what their ideal political party would propose, and on the likeliness of supporting a political party that was committed to no cap and trade policy and no carbon tax. Most Ontarians would be less likely to support a political party that proposed a direct new carbon tax.

- **Three out of ten residents of Ontario believe reducing the cost of electricity and energy should be the top policy priority for the provincial government** – Asked what the top policy priority should be for the government of Ontario, 30% of Ontarians responded with reducing the cost of electricity and energy. This was followed by improving healthcare (20%), supporting job creation (13%), balancing the Ontario budget (12%), investing in more social programs for those in need (ten per cent), delivering better education (seven per cent) and reducing greenhouse gases (five per cent). Two per cent are unsure.
- **More than six out of ten Ontarians oppose or somewhat oppose the new cap and trade policy** – More than six out of ten Ontarians oppose (51%) or somewhat oppose (ten per cent) the new cap-and-trade policy limiting the amount of tonnes of greenhouse gas businesses and institutions can emit and making them buy permits or allowances through government run auctions or from other companies if they exceed these limits. More than one out of three Ontarians support (21%) or somewhat support (15%) this. Four per cent are unsure.
- **Nearly seven out of ten Ontario residents believe that for this new policy, the true cost to the average Ontario household will be more than \$13 per month** – Sixty-eight per cent of Ontario residents think that for this policy, the true cost to the average Ontario household will be more than \$13 per month, while six per cent believe it will be \$13 per month and nine per cent believe it will be less than \$13 per month. Seventeen per cent are unsure.

- 
- **More than four out of ten Ontarians think the Ontario cap and trade policy will not at all reduce climate change** – Forty-five per cent of Ontarians think that Ontario's cap and trade policy will not at all reduce the climate change, while thirty-nine per cent think it will reduce climate change in a minor way and eight per cent think it will reduce it in a major way. Eight per cent are unsure.
 - **Ontario residents have mixed views on what greenhouse gas policies their ideal political party would propose** – When asked to look forward to the 2018 election and what their ideal political party would propose, thirty-one per cent of Ontario residents said continue with this new cap and trade program to encourage the reduction of greenhouse gases. This was followed by do neither (29%) and put a new direct tax on carbon energy like gasoline and home heating fuel (23%). Sixteen per cent are unsure.
 - **More than four out of ten Ontario residents would be less likely to support a party that proposed a cap and trade program to encourage the reduction of greenhouse gases** – Forty-five per cent of Ontario residents would be less likely to support a party that proposed a cap and trade program to encourage the reduction of greenhouse gases, while 29% would be more likely and 18% would be as likely to support. Eight per cent are unsure.
 - **Close to six out of ten Ontarians would be less likely to support a party that proposed a direct new tax on carbon energy** – Fifty-eight per cent of Ontarians would be less likely to support a party that proposed a direct new tax on carbon energy like gasoline and home heating fuel to encourage the reduction of greenhouse gases, while 18% would be more likely and just as likely to support. Six per cent are unsure.
 - **Ontarians have mixed opinions on their likelihood of supporting a political party that were committed to no cap and trade or no carbon tax** – Thirty-nine per cent of Ontario residents would be more likely to support a political party that was committed to no cap and trade and no carbon tax, while 34% would be less likely to support and 16% would be just as likely to support a political party that would propose that. Eleven per cent are unsure.

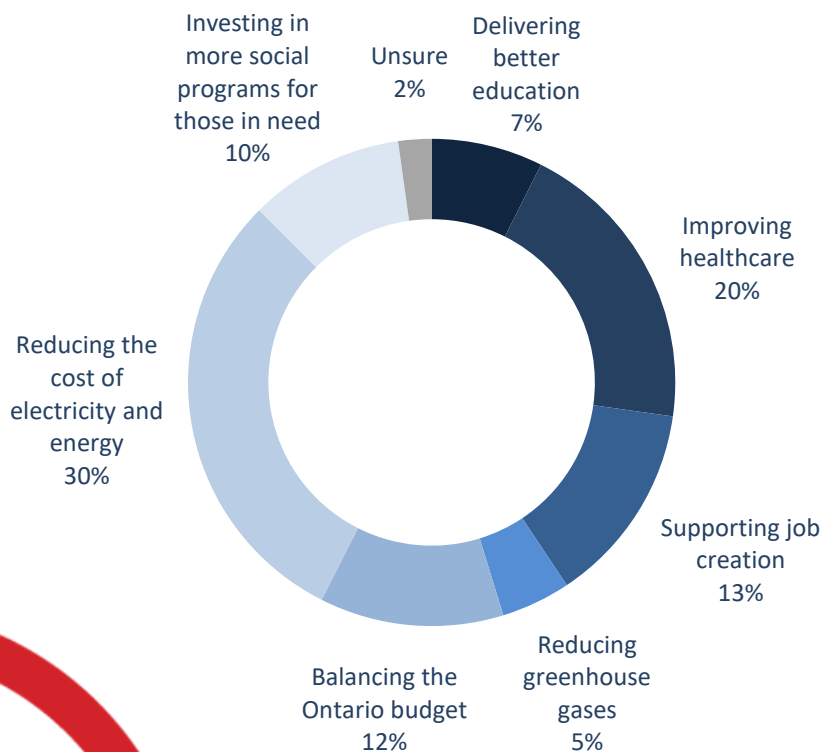
These observations are based on an RDD dual frame (land- and cell-lines) telephone random survey of 500 residents of Ontario, 18 years of age or older, between February 3rd and 7th, 2017 as part of an omnibus survey.

The margin of error for a random survey of 500 residents of Ontario is ± 4.4 percentage points, 19 times out of 20.

This study was commissioned by the Canadian Taxpayers Federation.

Top policy priority for Government of Ontario

Source: Nanos Research, RDD dual frame telephone random survey, February 3rd and 7th, 2017, n=500, accurate to 4.4 percentage points plus or minus, 19 times out of 20.



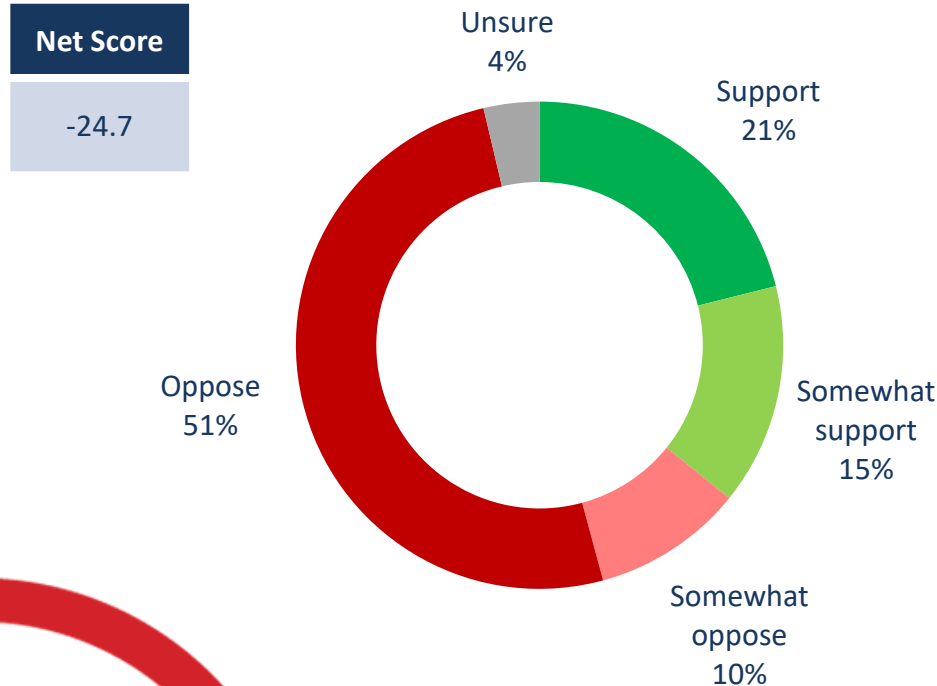
***Note: Charts may not add up to 100 due to rounding**

| Subgroups | Reducing the cost of electricity and energy |
|-------------------------|---|
| GTA (n=254) | 26.4% |
| Rest of Ontario (n=246) | 33.6% |
| Male (n=259) | 32.8% |
| Female (n=241) | 27.4% |
| 18 to 29 (n=74) | 30.8% |
| 30 to 39 (n=70) | 33.7% |
| 40 to 49 (n=110) | 26.6% |
| 50 to 59 (n=109) | 29.6% |
| 60 plus (n=137) | 30.2% |
| Liberal (n=134) | 20.9% |
| PC (n=203) | 37.6% |
| NDP (n=91) | 32.0% |
| Green (n=22) | 28.3% |
| Other (n=4) | 10.7% |
| Undecided (n=46) | 20.4% |

QUESTION – What should be the top policy priority for the Government of Ontario?
[RANDOMIZE]

Support for Ontario cap-and-trade tax policy

Source: Nanos Research, RDD dual frame telephone random survey, February 3rd and 7th, 2017, n=500, accurate to 4.4 percentage points plus or minus, 19 times out of 20.



***Note: Charts may not add up to 100 due to rounding**

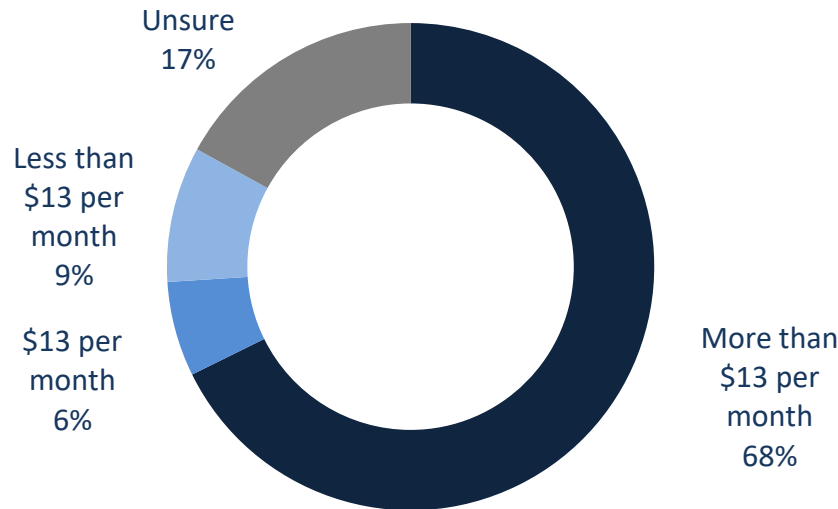
| Subgroups | Oppose/ Somewhat oppose |
|-------------------------|----------------------------|
| GTA (n=254) | 56.0% |
| Rest of Ontario (n=246) | 64.8% |
| Male (n=259) | 62.6% |
| Female (n=241) | 58.4% |
| 18 to 29 (n=74) | 58.7% |
| 30 to 39 (n=70) | 66.9% |
| 40 to 49 (n=110) | 59.6% |
| 50 to 59 (n=109) | 61.6% |
| 60 plus (n=137) | 57.0% |
| Liberal (n=134) | 42.4% |
| PC (n=203) | 71.6% |
| NDP (n=91) | 64.5% |
| Green (n=22) | 70.2% |
| Other (n=4) | 100.0% |
| Undecided (n=46) | 63.9% |

QUESTION – As you may have heard, the Government of Ontario introduced a cap-and-trade tax policy in Ontario on January 1, 2017. This policy limits how many tonnes of greenhouse gas businesses and institutions can emit and if they exceed those limits they have to buy permits or allowances through government run auctions or from other companies. It is estimated that the new policy will cost the average Ontario household about \$13 more per month to fuel a car and heat a home in 2017.

Do you support, somewhat support, somewhat oppose or oppose this policy?

Estimation of policy cost for average Ontario household

Source: Nanos Research, RDD dual frame telephone random survey, February 3rd and 7th, 2017, n=500, accurate to 4.4 percentage points plus or minus, 19 times out of 20.



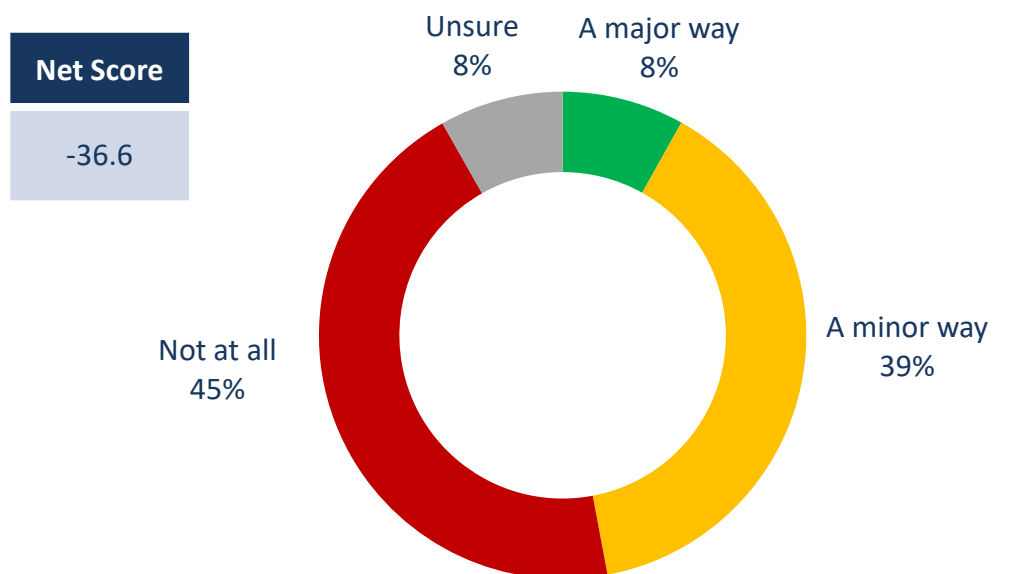
*Note: Charts may not add up to 100 due to rounding

| Subgroups | More than \$13 per month |
|-------------------------|--------------------------|
| GTA (n=254) | 67.8% |
| Rest of Ontario (n=246) | 67.7% |
| Male (n=259) | 71.5% |
| Female (n=241) | 64.1% |
| 18 to 29 (n=74) | 65.1% |
| 30 to 39 (n=70) | 77.7% |
| 40 to 49 (n=110) | 69.8% |
| 50 to 59 (n=109) | 58.2% |
| 60 plus (n=137) | 67.6% |
| Liberal (n=134) | 64.4% |
| PC (n=203) | 72.1% |
| NDP (n=91) | 63.8% |
| Green (n=22) | 52.2% |
| Other (n=4) | 100.0% |
| Undecided (n=46) | 69.0% |

QUESTION – For this new policy do you think the true cost to the average Ontario household will be more than \$13 per month, \$13 per month or less than \$13 per month?

Effect of cap-and-trade policy on climate change

Source: Nanos Research, RDD dual frame telephone random survey, February 3rd and 7th, 2017, n=500, accurate to 4.4 percentage points plus or minus, 19 times out of 20.



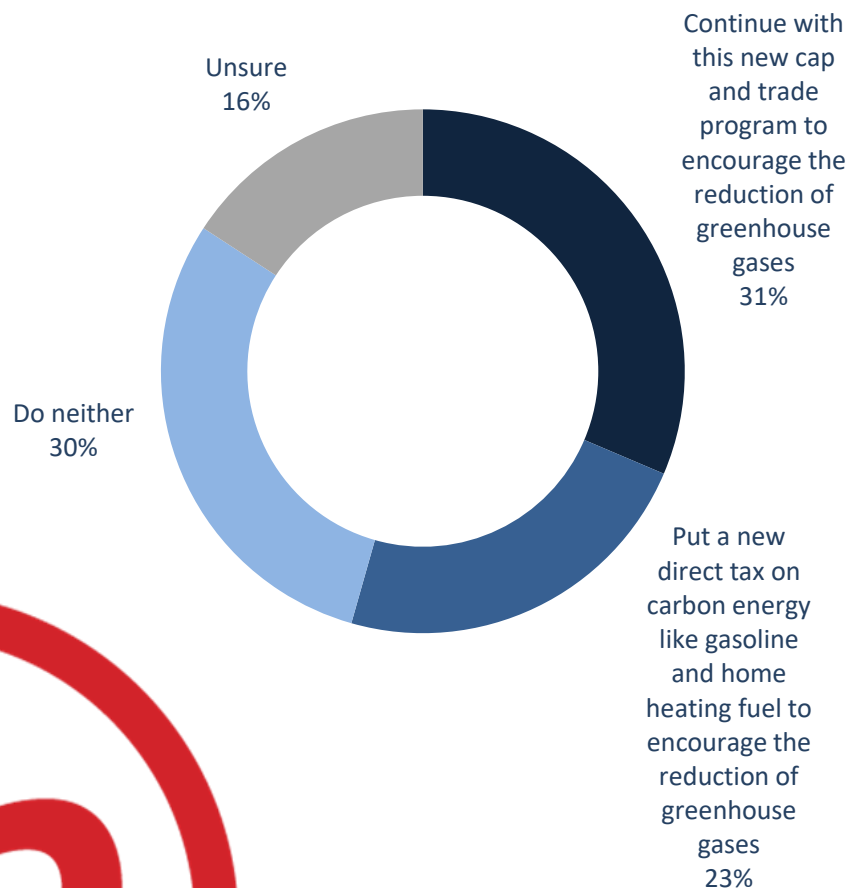
***Note: Charts may not add up to 100 due to rounding**

| Subgroups | Not at all |
|-------------------------|------------|
| GTA (n=254) | 42.7% |
| Rest of Ontario (n=246) | 46.8% |
| Male (n=259) | 52.2% |
| Female (n=241) | 37.6% |
| 18 to 29 (n=74) | 37.0% |
| 30 to 39 (n=70) | 55.3% |
| 40 to 49 (n=110) | 40.9% |
| 50 to 59 (n=109) | 46.5% |
| 60 plus (n=137) | 45.5% |
| Liberal (n=134) | 28.8% |
| PC (n=203) | 58.1% |
| NDP (n=91) | 34.8% |
| Green (n=22) | 20.8% |
| Other (n=4) | 81.1% |
| Undecided (n=46) | 57.8% |

QUESTION – Do you think Ontario's cap and trade policy will reduce climate change in a major way, in a minor way or not at all?

Ideal proposal for the reduction of greenhouse gases

Source: Nanos Research, RDD dual frame telephone random survey, February 3rd and 7th, 2017, n=500, accurate to 4.4 percentage points plus or minus, 19 times out of 20.



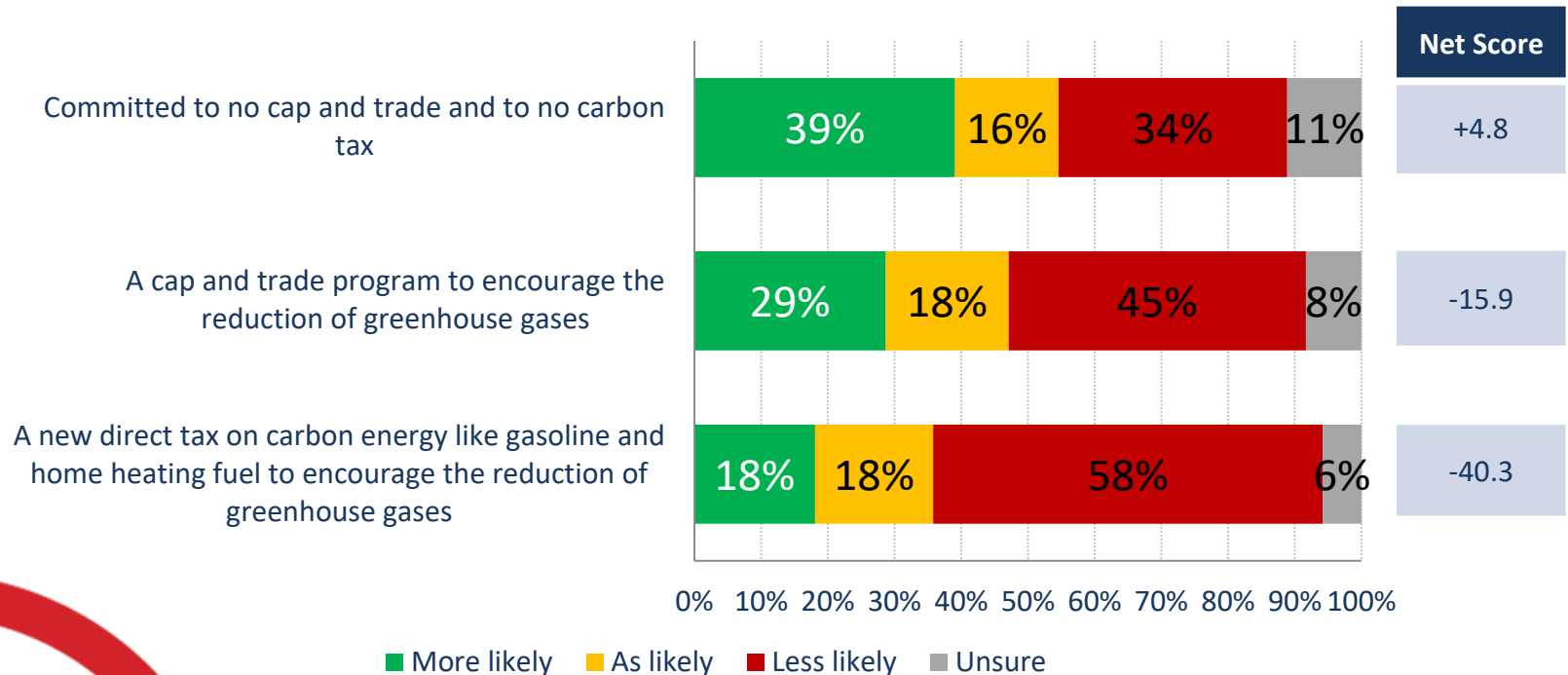
| Subgroups | Continue with this new cap and trade program |
|-------------------------|--|
| GTA (n=254) | 33.7% |
| Rest of Ontario (n=246) | 29.2% |
| Male (n=259) | 28.0% |
| Female (n=241) | 34.6% |
| 18 to 29 (n=74) | 31.5% |
| 30 to 39 (n=70) | 35.9% |
| 40 to 49 (n=110) | 31.9% |
| 50 to 59 (n=109) | 27.4% |
| 60 plus (n=137) | 30.5% |
| Liberal (n=134) | 37.2% |
| PC (n=203) | 26.1% |
| NDP (n=91) | 39.6% |
| Green (n=22) | 25.1% |
| Other (n=4) | 0.0% |
| Undecided (n=46) | 28.2% |

***Note: Charts may not add up to 100 due to rounding**

QUESTION – Looking forward to the 2018 election, would your ideal political party propose [ROTATE]

Effects of greenhouse gas policies on political party support

Source: Nanos Research, RDD dual frame telephone random survey, February 3rd and 7th, 2017, n=500, accurate to 4.4 percentage points plus or minus, 19 times out of 20.

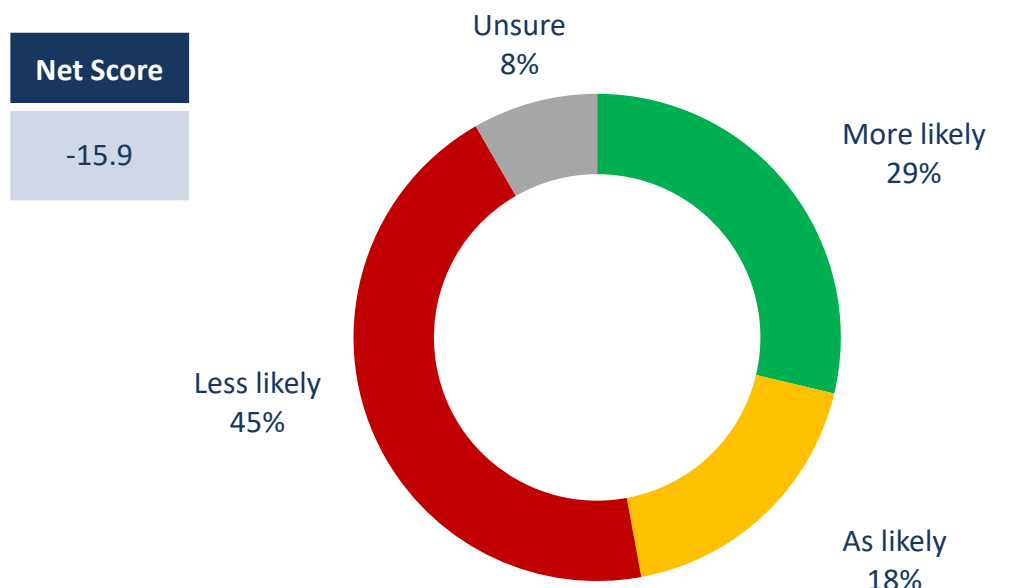


*Note: Charts may not add up to 100 due to rounding

QUESTION – Are you more likely to support, less likely to support, or would your support not change if a party proposed [ROTATE]

Effect on political support: cap and trade programs

Source: Nanos Research, RDD dual frame telephone random survey, February 3rd and 7th, 2017, n=500, accurate to 4.4 percentage points plus or minus, 19 times out of 20.



***Note: Charts may not add up to 100 due to rounding**

| Subgroups | Less likely |
|-------------------------|-------------|
| GTA (n=254) | 44.0% |
| Rest of Ontario (n=246) | 45.1% |
| Male (n=259) | 51.2% |
| Female (n=241) | 38.1% |
| 18 to 29 (n=74) | 40.2% |
| 30 to 39 (n=70) | 45.1% |
| 40 to 49 (n=110) | 42.1% |
| 50 to 59 (n=109) | 46.1% |
| 60 plus (n=137) | 48.8% |
| Liberal (n=134) | 30.2% |
| PC (n=203) | 55.2% |
| NDP (n=91) | 41.1% |
| Green (n=22) | 34.2% |
| Other (n=4) | 77.3% |
| Undecided (n=46) | 46.8% |

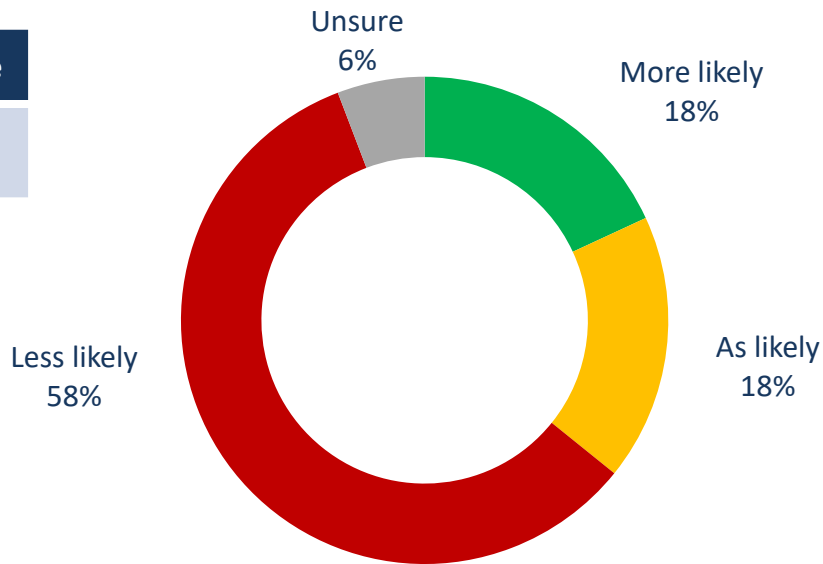
QUESTION – Are you more likely to support, less likely to support, or would your support not change if a party proposed [ROTATE]

A cap and trade program to encourage the reduction of greenhouse gases

Effect on political support: direct tax on carbon

Source: Nanos Research, RDD dual frame telephone random survey, February 3rd and 7th, 2017, n=500, accurate to 4.4 percentage points plus or minus, 19 times out of 20.

Net Score
-40.3



***Note: Charts may not add up to 100 due to rounding**

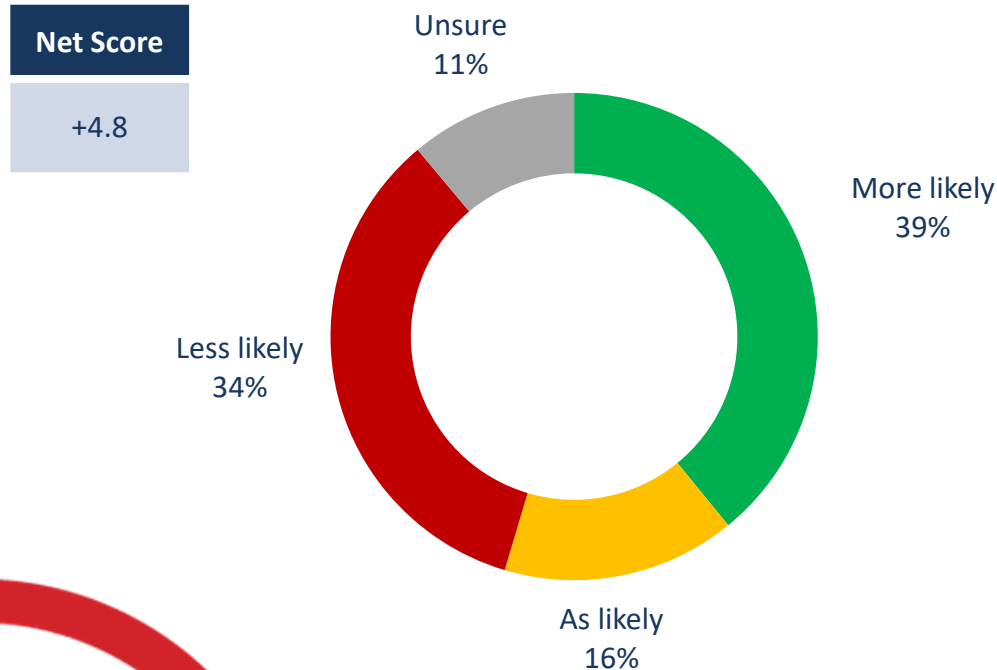
| Subgroups | Less likely |
|-------------------------|-------------|
| GTA (n=254) | 52.9% |
| Rest of Ontario (n=246) | 63.7% |
| Male (n=259) | 63.6% |
| Female (n=241) | 53.4% |
| 18 to 29 (n=74) | 50.0% |
| 30 to 39 (n=70) | 61.0% |
| 40 to 49 (n=110) | 65.0% |
| 50 to 59 (n=109) | 60.4% |
| 60 plus (n=137) | 55.9% |
| Liberal (n=134) | 52.4% |
| PC (n=203) | 63.1% |
| NDP (n=91) | 61.6% |
| Green (n=22) | 31.4% |
| Other (n=4) | 52.3% |
| Undecided (n=46) | 61.5% |

QUESTION – Are you more likely to support, less likely to support, or would your support not change if a party proposed [ROTATE]

A new direct tax on carbon energy like gasoline and home heating fuel to encourage the reduction of greenhouse gases

Effect on political support: no cap and trade or carbon tax

Source: Nanos Research, RDD dual frame telephone random survey, February 3rd and 7th, 2017, n=500, accurate to 4.4 percentage points plus or minus, 19 times out of 20.



***Note: Charts may not add up to 100 due to rounding**

| Subgroups | More likely |
|-------------------------|-------------|
| GTA (n=254) | 39.4% |
| Rest of Ontario (n=246) | 38.9% |
| Male (n=259) | 46.8% |
| Female (n=241) | 31.7% |
| 18 to 29 (n=74) | 34.2% |
| 30 to 39 (n=70) | 48.0% |
| 40 to 49 (n=110) | 34.0% |
| 50 to 59 (n=109) | 41.6% |
| 60 plus (n=137) | 39.4% |
| Liberal (n=134) | 29.0% |
| PC (n=203) | 48.7% |
| NDP (n=91) | 35.3% |
| Green (n=22) | 23.4% |
| Other (n=4) | 100.0% |
| Undecided (n=46) | 33.5% |

QUESTION – Are you more likely to support, less likely to support, or would your support not change if a party proposed [ROTATE]

Committed to no cap and trade and to no carbon tax



Methodology

Methodology

Nanos conducted an RDD dual frame (land- and cell-lines) telephone random survey of 500 residents of Ontario, 18 years of age or older, between February 3rd and 7th, 2017 as part of an omnibus survey. Participants were randomly recruited by telephone using live agents. The results were statistically checked and weighted by age and gender using the latest Census information and the sample is geographically stratified to be representative of Ontario.

Individuals were randomly called using random digit dialling with a maximum of five call backs.

The margin of error for a random survey of 500 residents of Ontario is ± 4.4 percentage points, 19 times out of 20.

The research was commissioned by the Canadian Taxpayers Federation.

Note: Charts may not add up to 100 due to rounding.



About Nanos

Nanos is one of North America's most trusted research and strategy organizations. Our team of professionals is regularly called upon by senior executives to deliver superior intelligence and market advantage whether it be helping to chart a path forward, managing a reputation or brand risk or understanding the trends that drive success. Services range from traditional telephone surveys, through to elite in-depth interviews, online research and focus groups. Nanos clients range from Fortune 500 companies through to leading advocacy groups interested in understanding and shaping the public landscape. Whether it is understanding your brand or reputation, customer needs and satisfaction, engaging employees or testing new ads or products, Nanos provides insight you can trust.



View our brochure

Nanos Research

North America Toll-free

1.888.737.5505

info@nanosresearch.com

Technical Note

| Element | Description |
|--|---|
| Organization who commissioned the research | Canadian Taxpayers Federation. |
| Final Sample Size | 500 Randomly selected individuals. |
| Margin of Error | ±4.4 percentage points, 19 times out of 20. |
| Mode of Survey | RDD dual frame (land- and cell-lines) telephone omnibus survey |
| Sampling Method Base | The sample included both land- and cell-lines RDD (Random Digit Dialed) across Canada. |
| Demographics (Captured) | Ontario; Men and Women; 18 years and older. Six digit postal code was used to validate geography. |
| Fieldwork/Validation | Live interviews with live supervision to validate work as per the MRIA Code of Conduct |
| Number of Calls | Maximum of five call backs. |
| Time of Calls | Individuals were called between 12-5:30 pm and 6:30-9:30pm local time for the respondent. |
| Field Dates | February 3 rd to 7 th , 2017. |
| Language of Survey | The survey was conducted in both English and French. |

| Element | Description |
|-------------------------|---|
| Weighting of Data | The results were weighted by age and gender using the latest Census information (2014) and the sample is geographically stratified to ensure a distribution across all regions of Ontario. See tables for full weighting disclosure |
| Screening | Screening ensured potential respondents did not work in the market research industry, in the advertising industry, in the media or a political party prior to administering the survey to ensure the integrity of the data. |
| Excluded Demographics | Individuals younger than 18 years old; individuals without land or cell lines could not participate. |
| Stratification | By age and gender using the latest Census information (2014) and the sample is geographically stratified to be representative of Ontario. |
| Estimated Response Rate | 9 percent, consistent with industry norms. |
| Question Order | Question order in the preceding report reflects the order in which they appeared in the original questionnaire. |
| Question Content | This was module seven of an omnibus survey. The previous modules related to top provincial issues of concern, vote consideration, preferred premiers, political leadership qualities, and municipal governments. |
| Question Wording | The questions in the preceding report are written exactly as they were asked to individuals. |
| Survey Company | Nanos Research |
| Contact | Contact Nanos Research for more information or with any concerns or questions. http://www.nanosresearch.com Telephone:(613) 234-4666 ext. Email: info@nanosresearch.com. |



Tabulations



2017-986 – CTF – Ontario Survey - STAT SHEET

| | | | 2017-01 | | | | | | | | | | | | | | | |
|--|---|---------|---------|------|---------|------|--------|----------|----------|----------|----------|---------|--------------|------|------|-------|-------|-----------|
| | | | Region | | Gender | | Age | | | | | | Vote Profile | | | | | |
| | | | Ontario | | Rest of | | | | | | | | | | | | | |
| | | | 2017-01 | GTA | Ontario | Male | Female | 18 to 29 | 30 to 39 | 40 to 49 | 50 to 59 | 60 plus | Liberal | PC | NDP | Green | Other | Undecided |
| Question - What should be the top policy priority for the Government of Ontario? [RANDOMIZE] | Total | Unwgt N | 500 | 254 | 246 | 259 | 241 | 74 | 70 | 110 | 109 | 137 | 134 | 203 | 91 | 22 | 4 | 46 |
| | | Wgt N | 500 | 246 | 254 | 245 | 255 | 99 | 89 | 107 | 87 | 118 | 138 | 213 | 84 | 20 | 4 | 41 |
| | Reducing the cost of electricity and energy | % | 30.0 | 26.4 | 33.6 | 32.8 | 27.4 | 30.8 | 33.7 | 26.6 | 29.6 | 30.2 | 20.9 | 37.6 | 32.0 | 28.3 | 10.7 | 20.4 |
| | Improving healthcare | % | 19.8 | 20.2 | 19.4 | 18.9 | 20.7 | 19.7 | 12.1 | 23.0 | 23.4 | 20.3 | 27.7 | 15.6 | 16.5 | 14.7 | .0 | 26.5 |
| | Supporting job creation | % | 13.4 | 16.6 | 10.2 | 14.0 | 12.7 | 14.2 | 13.8 | 9.5 | 14.2 | 15.4 | 17.7 | 11.7 | 11.0 | 7.8 | .0 | 16.7 |
| | Balancing the Ontario budget | % | 12.2 | 11.6 | 12.7 | 16.1 | 8.5 | 9.8 | 11.5 | 16.8 | 13.2 | 9.8 | 5.6 | 18.3 | 11.0 | .0 | 70.4 | 5.7 |
| | Investing in more social programs for those in need | % | 10.3 | 11.4 | 9.3 | 5.3 | 15.1 | 7.6 | 19.9 | 7.5 | 7.4 | 10.2 | 13.1 | 5.2 | 16.2 | 19.3 | 18.9 | 10.4 |
| | Delivering better education | % | 7.4 | 7.4 | 7.4 | 6.8 | 7.9 | 13.9 | 5.6 | 7.3 | 6.0 | 4.4 | 6.2 | 6.1 | 9.0 | 19.7 | .0 | 9.0 |
| | Reducing greenhouse gases | % | 4.6 | 5.4 | 3.9 | 4.4 | 4.9 | 2.5 | .7 | 6.0 | 5.7 | 7.3 | 7.4 | 3.5 | .9 | 8.8 | .0 | 7.4 |
| | Unsure | % | 2.2 | .9 | 3.4 | 1.6 | 2.8 | 1.5 | 2.7 | 3.3 | .6 | 2.5 | 1.3 | 2.1 | 3.4 | 1.3 | .0 | 3.9 |

Nanos conducted an RDD dual frame (land- and cell- lines) random telephone survey of 500 residents of Ontario, 18 years of age or older, between February 3rd and 7th, 2017. The margin of error for a random survey of 500 residents of Ontario is ± 4.4 percentage points, 19 times out of 20.

www.nanosresearch.com



2017-986 – CTF – Ontario Survey - STAT SHEET

| | | | Region | | Gender | | Age | | | | | Vote Profile | | | | | | |
|--|------------------|-------|---------------|------|---------|------|--------|----------|----------|----------|----------|--------------|---------|------|------|-------|-------|-----------|
| | | | Ontario 2017- | | Rest of | | | | | | | | | | | | | |
| | | | 01 | GTA | Ontario | Male | Female | 18 to 29 | 30 to 39 | 40 to 49 | 50 to 59 | 60 plus | Liberal | PC | NDP | Green | Other | Undecided |
| Question - As you may have heard, the Government of Ontario introduced a cap-and-trade tax policy in Ontario on January 1, 2017. This policy limits how many tonnes of greenhouse gas businesses and institutions can emit and if they exceed those limits they have to buy permits or allowances through government run auctions or from other companies. It is estimated that the new policy will cost the average Ontario household about \$13 more per month to fuel a car and heat a home in 2017. Do you support, somewhat support, somewhat oppose or oppose this policy? | Total | Unwgt | 500 | 254 | 246 | 259 | 241 | 74 | 70 | 110 | 109 | 137 | 134 | 203 | 91 | 22 | 4 | 46 |
| | | N | | | | | | | | | | | | | | | | |
| | | Wgt N | 500 | 246 | 254 | 245 | 255 | 99 | 89 | 107 | 87 | 118 | 138 | 213 | 84 | 20 | 4 | 41 |
| | Support | % | 21.1 | 23.1 | 19.2 | 19.6 | 22.7 | 24.4 | 18.0 | 22.8 | 16.2 | 23.0 | 35.7 | 13.2 | 15.5 | 38.5 | .0 | 18.2 |
| | Somewhat support | % | 14.7 | 17.3 | 12.1 | 16.6 | 12.8 | 12.1 | 12.6 | 16.0 | 19.2 | 13.8 | 19.7 | 12.0 | 16.1 | 9.3 | .0 | 12.5 |
| | Somewhat oppose | % | 10.0 | 8.8 | 11.1 | 6.9 | 12.9 | 15.9 | 11.1 | 10.0 | 9.5 | 4.5 | 8.5 | 8.0 | 15.6 | 14.1 | .0 | 12.4 |
| | Oppose | % | 50.5 | 47.2 | 53.7 | 55.7 | 45.5 | 42.8 | 55.8 | 49.6 | 52.1 | 52.5 | 33.9 | 63.6 | 48.9 | 21.3 | 100.0 | 51.5 |
| | Unsure | % | 3.7 | 3.6 | 3.8 | 1.2 | 6.1 | 4.7 | 2.5 | 1.6 | 3.0 | 6.3 | 2.2 | 3.1 | 4.0 | 16.7 | .0 | 5.3 |

Nanos conducted an RDD dual frame (land- and cell- lines) random telephone survey of 500 residents of Ontario, 18 years of age or older, between February 3rd and 7th, 2017. The margin of error for a random survey of 500 residents of Ontario is ± 4.4 percentage points, 19 times out of 20.

www.nanosresearch.com



2017-986 – CTF – Ontario Survey - STAT SHEET

| | | | Region | | Gender | | Age | | | | | Vote Profile | | | | | | |
|--|--------------------------|---------|---------|------|---------|------|--------|----------|----------|----------|----------|--------------|---------|------|------|-------|-------|-----------|
| | | | Ontario | | Rest of | | | | | | | | | | | | | |
| | | | 2017-01 | GTA | Ontario | Male | Female | 18 to 29 | 30 to 39 | 40 to 49 | 50 to 59 | 60 plus | Liberal | PC | NDP | Green | Other | Undecided |
| Question - For this new policy do you think the true cost to the average Ontario household will be more than \$13 per month, \$13 per month or less than \$13 per month? | Total | Unwgt N | 500 | 254 | 246 | 259 | 241 | 74 | 70 | 110 | 109 | 137 | 134 | 203 | 91 | 22 | 4 | 46 |
| | | Wgt N | 500 | 246 | 254 | 245 | 255 | 99 | 89 | 107 | 87 | 118 | 138 | 213 | 84 | 20 | 4 | 41 |
| | More than \$13 per month | % | 67.7 | 67.8 | 67.7 | 71.5 | 64.1 | 65.1 | 77.7 | 69.8 | 58.2 | 67.6 | 64.4 | 72.1 | 63.8 | 52.2 | 100.0 | 69.0 |
| | \$13 per month | % | 6.3 | 6.3 | 6.3 | 6.7 | 5.9 | 7.1 | 5.1 | 6.4 | 9.8 | 4.0 | 8.7 | 5.2 | 3.1 | 7.5 | .0 | 10.6 |
| | Less than \$13 per month | % | 9.0 | 10.4 | 7.6 | 9.3 | 8.6 | 7.4 | 6.9 | 13.1 | 6.8 | 9.7 | 9.3 | 6.4 | 18.0 | .0 | .0 | 8.2 |
| | Unsure | % | 17.0 | 15.4 | 18.5 | 12.4 | 21.3 | 20.4 | 10.2 | 10.7 | 25.2 | 18.7 | 17.6 | 16.3 | 15.2 | 40.3 | .0 | 12.2 |

Nanos conducted an RDD dual frame (land- and cell- lines) random telephone survey of 500 residents of Ontario, 18 years of age or older, between February 3rd and 7th, 2017. The margin of error for a random survey of 500 residents of Ontario is ± 4.4 percentage points, 19 times out of 20.

www.nanosresearch.com



2017-986 – CTF – Ontario Survey - STAT SHEET

| | | Region | | | | Gender | | Age | | | | | Vote Profile | | | | | |
|----------------------------|-------------|---------------|------|---------|------|--------|----------|----------|----------|----------|---------|---------|--------------|------|-------|-------|-----------|------|
| | | Ontario 2017- | | Rest of | | | | | | | | | | | | | | |
| | | 01 | GTA | Ontario | Male | Female | 18 to 29 | 30 to 39 | 40 to 49 | 50 to 59 | 60 plus | Liberal | PC | NDP | Green | Other | Undecided | |
| Question - Do you think | Total | Unwgt N | 500 | 254 | 246 | 259 | 241 | 74 | 70 | 110 | 109 | 137 | 134 | 203 | 91 | 22 | 4 | 46 |
| Ontario's cap and trade | | Wgt N | 500 | 246 | 254 | 245 | 255 | 99 | 89 | 107 | 87 | 118 | 138 | 213 | 84 | 20 | 4 | 41 |
| policy will reduce climate | A major way | % | 8.1 | 8.5 | 7.7 | 6.2 | 9.9 | 8.2 | 7.0 | 9.7 | 10.1 | 6.0 | 9.0 | 6.3 | 9.3 | 12.6 | .0 | 10.7 |
| change in a major way, in | A minor way | % | 38.9 | 41.4 | 36.5 | 36.0 | 41.7 | 39.6 | 29.5 | 44.9 | 38.1 | 40.8 | 54.2 | 28.3 | 48.9 | 42.0 | 18.9 | 22.5 |
| a minor way or not at all? | Not at all | % | 44.7 | 42.7 | 46.8 | 52.2 | 37.6 | 37.0 | 55.3 | 40.9 | 46.5 | 45.5 | 28.8 | 58.1 | 34.8 | 20.8 | 81.1 | 57.8 |
| | Unsure | % | 8.2 | 7.4 | 9.0 | 5.5 | 10.8 | 15.2 | 8.2 | 4.6 | 5.3 | 7.8 | 8.0 | 7.3 | 7.0 | 24.6 | .0 | 9.0 |

Nanos conducted an RDD dual frame (land- and cell- lines) random telephone survey of 500 residents of Ontario, 18 years of age or older, between February 3rd and 7th, 2017. The margin of error for a random survey of 500 residents of Ontario is ± 4.4 percentage points, 19 times out of 20.

www.nanosresearch.com



2017-986 – CTF – Ontario Survey - STAT SHEET

| | | | Region | | Gender | | Age | | | | | Vote Profile | | | | | | |
|--|---|---------|---------|------|---------|------|--------|----------|----------|----------|----------|--------------|---------|------|------|-------|-------|-----------|
| | | | Ontario | | Rest of | | | | | | | | | | | | | |
| | | | 2017-01 | GTA | Ontario | Male | Female | 18 to 29 | 30 to 39 | 40 to 49 | 50 to 59 | 60 plus | Liberal | PC | NDP | Green | Other | Undecided |
| Question - Looking forward to the 2018 election, would your ideal political party propose [ROTATE] | Total | Unwgt N | 500 | 254 | 246 | 259 | 241 | 74 | 70 | 110 | 109 | 137 | 134 | 203 | 91 | 22 | 4 | 46 |
| | | Wgt N | 500 | 246 | 254 | 245 | 255 | 99 | 89 | 107 | 87 | 118 | 138 | 213 | 84 | 20 | 4 | 41 |
| | Continue with this new cap and trade program to encourage the reduction of greenhouse gases | % | 31.4 | 33.7 | 29.2 | 28.0 | 34.6 | 31.5 | 35.9 | 31.9 | 27.4 | 30.5 | 37.2 | 26.1 | 39.6 | 25.1 | .0 | 28.2 |
| | Do neither | % | 29.8 | 29.2 | 30.4 | 34.3 | 25.5 | 27.5 | 28.7 | 33.6 | 30.8 | 28.5 | 24.8 | 38.2 | 21.6 | 22.0 | 10.7 | 26.0 |
| | Put a new direct tax on carbon energy like gasoline and home heating fuel | % | 23.0 | 25.8 | 20.3 | 23.4 | 22.5 | 23.2 | 26.5 | 21.8 | 22.6 | 21.4 | 22.0 | 23.6 | 18.1 | 34.8 | 66.6 | 22.9 |
| | Unsure | % | 15.8 | 11.4 | 20.1 | 14.2 | 17.3 | 17.8 | 9.0 | 12.7 | 19.2 | 19.6 | 16.0 | 12.1 | 20.6 | 18.0 | 22.7 | 22.9 |

Nanos conducted an RDD dual frame (land- and cell- lines) random telephone survey of 500 residents of Ontario, 18 years of age or older, between February 3rd and 7th, 2017. The margin of error for a random survey of 500 residents of Ontario is ± 4.4 percentage points, 19 times out of 20.

www.nanosresearch.com



2017-986 – CTF – Ontario Survey - STAT SHEET

Are you more likely to support, less likely to support, or would your support not change if a party proposed [ROTATE]

| | | | Region | | Gender | | Age | | | | | Vote Profile | | | | | | |
|---|-------------|---------|---------------|------|---------|------|--------|----------|----------|----------|----------|--------------|---------|------|------|-------|-------|-----------|
| | | | Ontario 2017- | | Rest of | | | | | | | | | | | | | |
| | | | 01 | GTA | Ontario | Male | Female | 18 to 29 | 30 to 39 | 40 to 49 | 50 to 59 | 60 plus | Liberal | PC | NDP | Green | Other | Undecided |
| Question - A cap and trade program to encourage the reduction of greenhouse gases | Total | Unwgt N | 500 | 254 | 246 | 259 | 241 | 74 | 70 | 110 | 109 | 137 | 134 | 203 | 91 | 22 | 4 | 46 |
| | | Wgt N | 500 | 246 | 254 | 245 | 255 | 99 | 89 | 107 | 87 | 118 | 138 | 213 | 84 | 20 | 4 | 41 |
| | More likely | % | 28.7 | 30.6 | 26.9 | 27.9 | 29.6 | 24.6 | 25.2 | 36.8 | 24.5 | 30.7 | 37.3 | 18.9 | 38.3 | 34.4 | 22.7 | 29.2 |
| | Less likely | % | 44.6 | 44.0 | 45.1 | 51.2 | 38.1 | 40.2 | 45.1 | 42.1 | 46.1 | 48.8 | 30.2 | 55.2 | 41.1 | 34.2 | 77.3 | 46.8 |
| | As likely | % | 18.4 | 19.1 | 17.7 | 13.7 | 22.9 | 25.0 | 24.5 | 14.0 | 16.8 | 13.4 | 25.5 | 15.2 | 18.4 | 14.8 | .0 | 14.2 |
| | Unsure | % | 8.3 | 6.3 | 10.3 | 7.2 | 9.3 | 10.1 | 5.2 | 7.1 | 12.6 | 7.1 | 7.0 | 10.7 | 2.2 | 16.6 | .0 | 9.7 |

Nanos conducted an RDD dual frame (land- and cell- lines) random telephone survey of 500 residents of Ontario, 18 years of age or older, between February 3rd and 7th, 2017. The margin of error for a random survey of 500 residents of Ontario is ± 4.4 percentage points, 19 times out of 20.

www.nanosresearch.com



2017-986 – CTF – Ontario Survey - STAT SHEET

Are you more likely to support, less likely to support, or would your support not change if a party proposed [ROTATE]

| | | | | Region | | Gender | | Age | | | | | Vote Profile | | | | | |
|---------------------------|-------------|---------|------|---------------|------|---------|----------|----------|----------|----------|---------|---------|--------------|------|-------|-------|-----------|------|
| | | | | Ontario 2017- | | Rest of | | | | | | | | | | | | |
| | | | | | | | | | | | | | | | | | | |
| | | 01 | GTA | Ontario | Male | Female | 18 to 29 | 30 to 39 | 40 to 49 | 50 to 59 | 60 plus | Liberal | PC | NDP | Green | Other | Undecided | |
| Question - A direct new | Total | Unwgt N | 500 | 254 | 246 | 259 | 241 | 74 | 70 | 110 | 109 | 137 | 134 | 203 | 91 | 22 | 4 | 46 |
| tax on carbon energy like | | Wgt N | 500 | 246 | 254 | 245 | 255 | 99 | 89 | 107 | 87 | 118 | 138 | 213 | 84 | 20 | 4 | 41 |
| gasoline and home | More likely | % | 18.1 | 18.2 | 18.0 | 21.9 | 14.4 | 17.0 | 13.6 | 19.4 | 16.8 | 22.1 | 15.9 | 16.7 | 20.3 | 25.6 | 47.7 | 22.0 |
| heating fuel to encourage | Less likely | % | 58.4 | 52.9 | 63.7 | 63.6 | 53.4 | 50.0 | 61.0 | 65.0 | 60.4 | 55.9 | 52.4 | 63.1 | 61.6 | 31.4 | 52.3 | 61.5 |
| the reduction of | As likely | % | 17.7 | 20.8 | 14.8 | 8.4 | 26.7 | 28.9 | 21.9 | 12.2 | 12.6 | 14.1 | 25.7 | 15.2 | 12.9 | 35.7 | .0 | 6.2 |
| greenhouse gases | Unsure | % | 5.8 | 8.1 | 3.6 | 6.1 | 5.5 | 4.0 | 3.5 | 3.4 | 10.2 | 7.9 | 6.0 | 5.0 | 5.1 | 7.4 | .0 | 10.3 |

Nanos conducted an RDD dual frame (land- and cell- lines) random telephone survey of 500 residents of Ontario, 18 years of age or older, between February 3rd and 7th, 2017. The margin of error for a random survey of 500 residents of Ontario is ± 4.4 percentage points, 19 times out of 20.

www.nanosresearch.com



2017-986 – CTF – Ontario Survey - STAT SHEET

Are you more likely to support, less likely to support, or would your support not change if a party proposed [ROTATE]

| | | | | Region | | Gender | | Age | | | | | Vote Profile | | | | | |
|-------------------------|-------------|---------|------|---------------|------|---------|----------|----------|----------|----------|---------|---------|--------------|------|-------|-------|-----------|------|
| | | | | Ontario 2017- | | Rest of | | | | | | | | | | | | |
| | | 01 | GTA | Ontario | Male | Female | 18 to 29 | 30 to 39 | 40 to 49 | 50 to 59 | 60 plus | Liberal | PC | NDP | Green | Other | Undecided | |
| Question - Committed to | Total | Unwgt N | 500 | 254 | 246 | 259 | 241 | 74 | 70 | 110 | 109 | 137 | 134 | 203 | 91 | 22 | 4 | 46 |
| no cap and trade and to | | Wgt N | 500 | 246 | 254 | 245 | 255 | 99 | 89 | 107 | 87 | 118 | 138 | 213 | 84 | 20 | 4 | 41 |
| no carbon tax | More likely | % | 39.1 | 39.4 | 38.9 | 46.8 | 31.7 | 34.2 | 48.0 | 34.0 | 41.6 | 39.4 | 29.0 | 48.7 | 35.3 | 23.4 | 100.0 | 33.5 |
| | Less likely | % | 34.3 | 34.5 | 34.2 | 31.3 | 37.2 | 30.3 | 35.4 | 33.5 | 31.7 | 39.6 | 43.0 | 25.7 | 38.9 | 45.4 | .0 | 38.1 |
| | As likely | % | 15.5 | 15.2 | 15.8 | 14.6 | 16.3 | 20.3 | 14.3 | 19.2 | 13.5 | 10.5 | 16.6 | 16.8 | 13.7 | 9.8 | .0 | 12.5 |
| | Unsure | % | 11.1 | 11.0 | 11.1 | 7.2 | 14.7 | 15.3 | 2.2 | 13.3 | 13.3 | 10.5 | 11.4 | 8.8 | 12.0 | 21.4 | .0 | 15.9 |

Nanos conducted an RDD dual frame (land- and cell- lines) random telephone survey of 500 residents of Ontario, 18 years of age or older, between February 3rd and 7th, 2017. The margin of error for a random survey of 500 residents of Ontario is ± 4.4 percentage points, 19 times out of 20.

www.nanosresearch.com