

# Weekly Nanos Party Power Index Tracking

Nanos Weekly Tracking, ending May 1, 2015  
(released May 6, 2015)



*Ideas powered by  
world-class data*

# Weekly Nanos Party Power Index



## Liberals highest on index, post budget positive movement for Conservatives continues for second week (Released 05/06/2015)

The second week coming out of the federal budget showed further positive movement for the Conservatives although they still trail the Liberals in the Nanos Party Power Index. The Liberals scored 56 out of a possible 100 points, followed by the Conservatives and NDP both at 52 points, the Green Party at 33 points and the BQ at 26 points (QC only). Although still trailing the other parties and leaders, Mulcair hit a new 12 month high on the preferred Prime Minister measure and the NDP hit a new 12 month high in accessible voters.

The Nanos Party Power Index comprises a basket of political goods that includes ballot preferences, accessible voters, preferred PM views and evaluations of the leaders. It is modeled similar to a standard confidence index. It is a random telephone survey conducted with live agents, reaching out to Canadians through a land- and cell-line dual frame sample.

On the preferred Prime Minister front, Harper registered a one point gain in the past week. Readers should note that this measure is based on a four week rolling average. Asked which federal party leader they preferred as Prime Minister, 31 per cent said Harper was their first choice, with Trudeau at 30 per cent, Mulcair at 21 per cent, May at five per cent while 12 per cent were unsure.

Asked a series of independent questions as to whether they would consider or not consider voting for each of the federal parties, 53 per cent of Canadians would consider voting Liberal while 47 per cent would consider voting NDP, 40 per cent would consider voting Conservative and 30 per cent would consider voting for the Greens.

# Party Power Index



The Nanos Party Power Index Tracking for Canada is based on a composite of the following public opinion measures: the national ballot, which party individuals would consider voting for, the top two choices for Prime Minister, and whether each party leader has good leadership qualities.

Contact: Nik Nanos  
Ottawa: (613) 234-4666 x 237  
Washington DC: (202) 697-9924  
nnanos@nanosresearch.com

## *Data Summary*

	This Week	Last Week	4 Weeks Ago	3 Months Ago	1 Year Ago (May 2014)	12 Month High	12 Month Low	12 Month Average
<b>Canada Party Power Index</b>								
Liberal	56.4	56.8	56.5	57.8	55.9	60.7	55.5	57.0
Conservative	52.0	51.4	51.9	52.8	50.4	54.3	48.4	51.6
NDP	51.9	51.9	50.7	49.5	50.5	52.2	47.4	49.5
Green	33.3	34.2	33.2	31.5	34.5	35.2	30.1	32.2
Bloc	25.8	25.9	26.1	26.5	28.5	28.7	22.9	26.3
<b>Party Consider</b>								
Liberal	53.1%	51.0%	50.9%	55.2%	54.2%	59.7%	50.9%	54.4%
NDP	47.1%	46.2%	44.3%	45.2%	44.4%	47.1%	41.4%	44.1%
Conservative	40.3%	38.9%	42.8%	44.7%	38.5%	44.7%	36.1%	41.5%
Bloc	31.1%	30.9%	30.1%	31.1%	32.9%	36.7%	25.3%	30.5%
Green	30.3%	29.8%	27.3%	29.7%	27.2%	33.1%	23.4%	27.7%
<b>Preferred Prime Minister</b>								
Harper	30.5%	29.4%	31.1%	31.2%	26.6%	34.1%	25.5%	30.4%
Trudeau	29.9%	29.9%	29.0%	31.4%	27.4%	35.8%	26.7%	31.0%
Mulcair	21.4%	20.8%	18.3%	17.2%	19.5%	21.4%	13.7%	17.8%
May	4.9%	5.0%	4.4%	3.4%	5.9%	6.7%	3.0%	4.7%
Beaulieu	1.3%	1.4%	1.6%	1.0%	2.3%	2.8%	0.5%	1.3%
Unsure	12.0%	13.6%	15.6%	15.8%	17.1%	18.1%	11.7%	14.5%

# About the Index



## *Weekly Nanos Party Power Index*

Since voters are not actually able to make a choice between elections, it is interesting to think about party strength and support more broadly. The Nanos Party Power Index fills this need by incorporating more information than just current vote preference.

The Nanos Party Power Index is a weekly composite measurement of federal party brands based on four questions about the federal parties and their leadership. The questions include:

- a ballot question that captures the 1<sup>st</sup> and 2<sup>nd</sup> vote preferences;
- a measure of whether the respondent would consider voting for the party;
- the 1<sup>st</sup> and 2<sup>nd</sup> preferences for Prime Minister of the current federal leaders; and,
- whether the respondent believes each current leader has the quality to be a good leader.

The views of 1,000 respondents are compiled into a diffusion brand index for each party that goes from 0 to 100, where 0 means that the party has no brand strength and 100 means it has maximum brand strength. A score above 50 is an indication of brand strength for the party and its leader at this time.

The important factors in this weekly tracking include the direction of the brand strength or weakness and also the brand strength of one federal party relative to another.

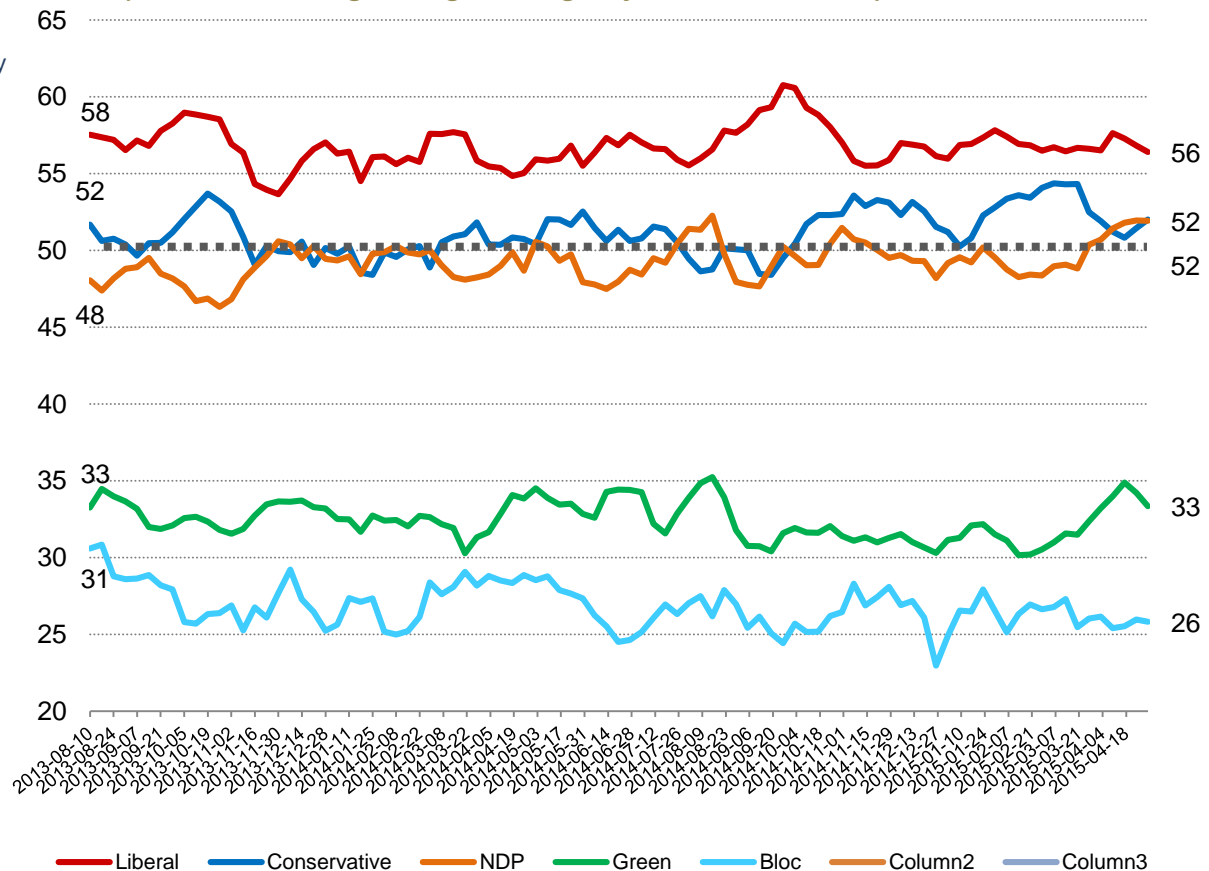
# Party Power Index



The Nanos Party Power Index Tracking for Canada is based on a composite of the following public opinion measures: the national ballot, which party individuals would consider voting for, the top two choices for Prime Minister, and whether each party leader has good leadership qualities.

Contact: Nik Nanos  
Ottawa: (613) 234-4666 x 237  
Washington DC: (202) 697-9924  
nnanos@nanosresearch.com

**Canada Weekly Index Tracking Scores**  
(Four week rolling average ending May 1<sup>st</sup>, 2015, n=1,000)





## Nanos Weekly Tracking



***Expert Counsel to CEOs  
and thought leaders***

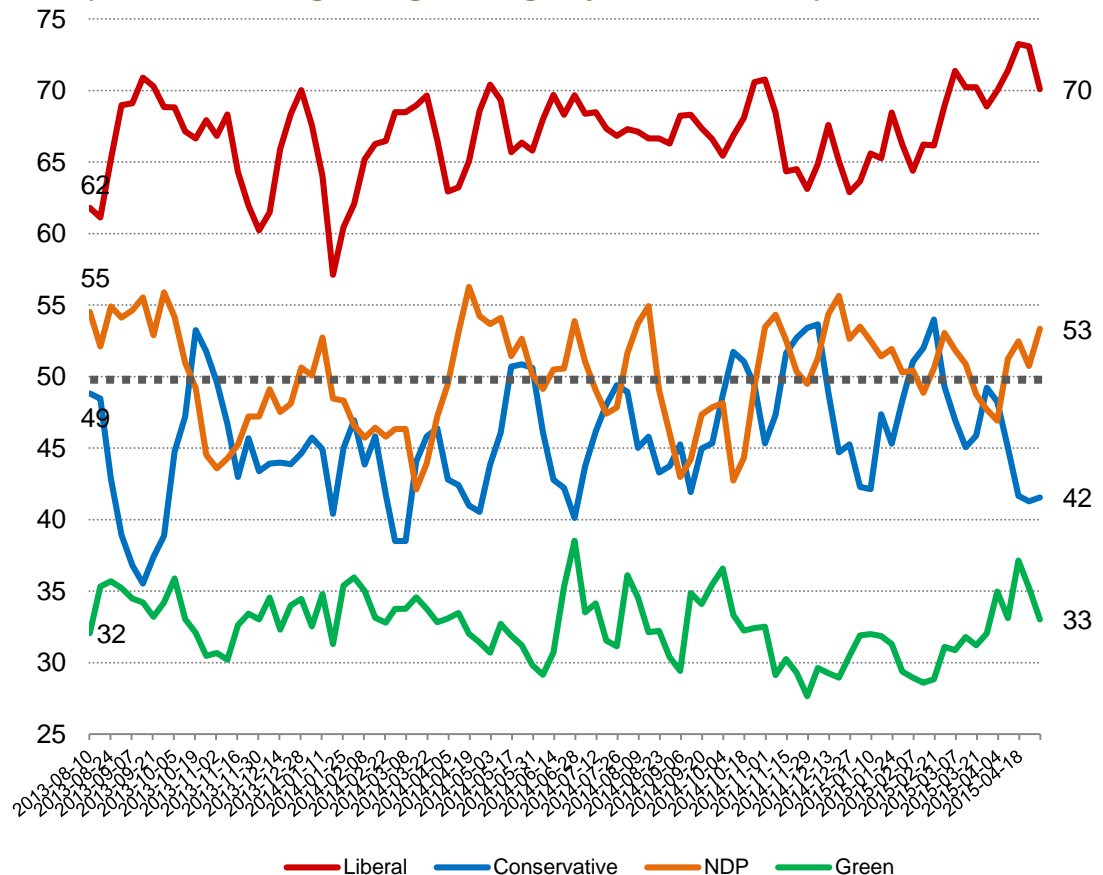
# Party Power Index



The Nanos Party Power Index Tracking for the Atlantic is based on a composite of the following public opinion measures: the national ballot, which party individuals would consider voting for, the top two choices for Prime Minister, and whether each party leader has good leadership qualities. There are wider margins of accuracy for regional subsamples.

Contact: Nik Nanos  
Ottawa: (613) 234-4666 x 237  
Washington DC: (202) 697-9924  
nnanos@nanosresearch.com

**Atlantic Weekly Index Tracking Scores**  
(Four week rolling average ending May 1<sup>st</sup>, 2015, n=100)



# Party Power Index



The Nanos Party Power Index Tracking for Quebec is based on a composite of the following public opinion measures: the national ballot, which party individuals would consider voting for, the top two choices for Prime Minister, and whether each party leader has good leadership qualities. There are wider margins of accuracy for regional subsamples.

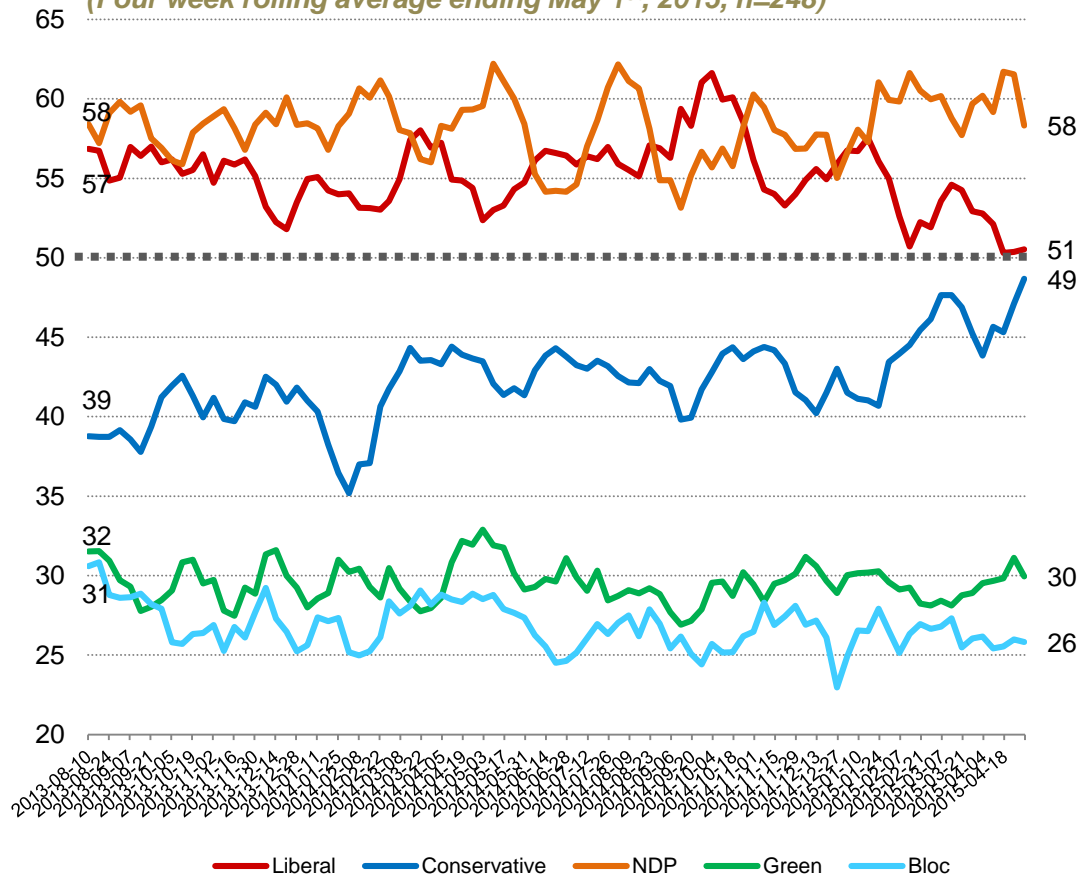
Contact: Nik Nanos

Ottawa: (613) 234-4666 x 237

Washington DC: (202) 697-9924

nnanos@nanosresearch.com

**Quebec Weekly Index Tracking Scores**  
(Four week rolling average ending May 1<sup>st</sup>, 2015, n=248)





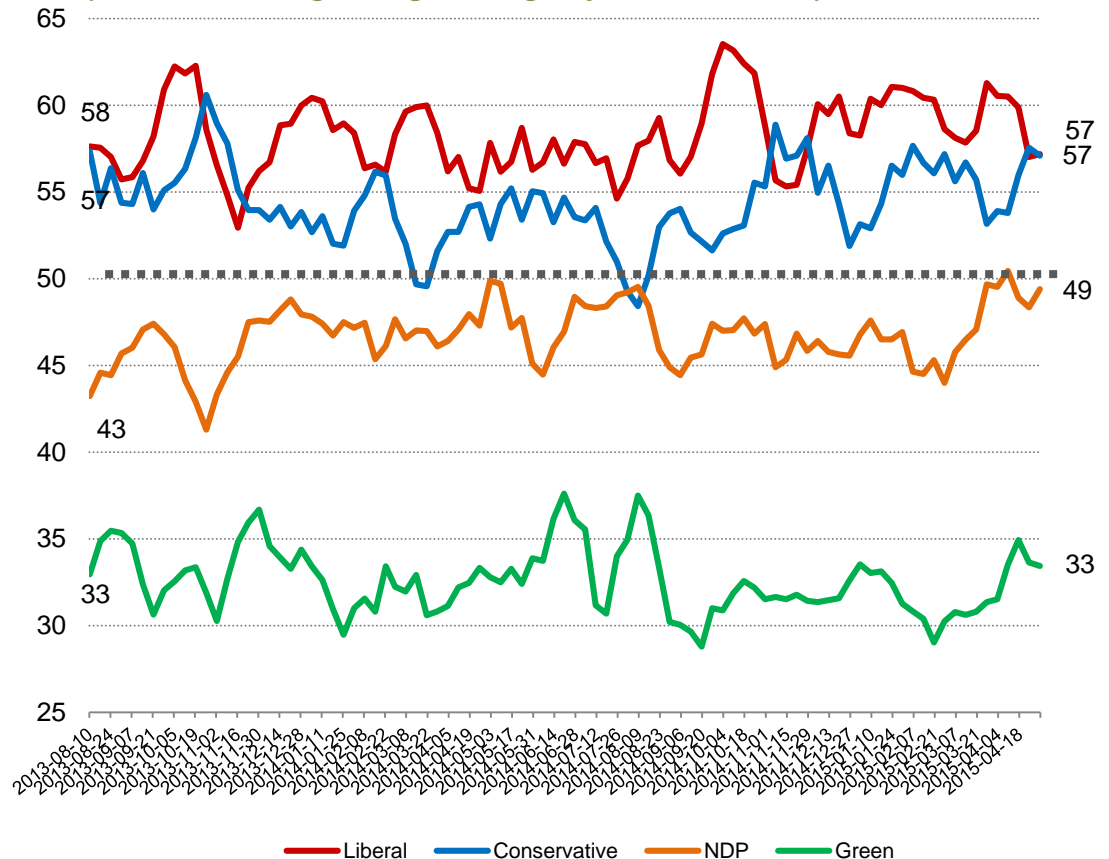
# Party Power Index



The Nanos Party Power Index Tracking for Ontario is based on a composite of the following public opinion measures: the national ballot, which party individuals would consider voting for, the top two choices for Prime Minister, and whether each party leader has good leadership qualities. There are wider margins of accuracy for regional subsamples.

Contact: Nik Nanos  
Ottawa: (613) 234-4666 x 237  
Washington DC: (202) 697-9924  
nnanos@nanosresearch.com

## Ontario Weekly Index Tracking Scores (Four week rolling average ending May 1<sup>st</sup>, 2015, n=300)



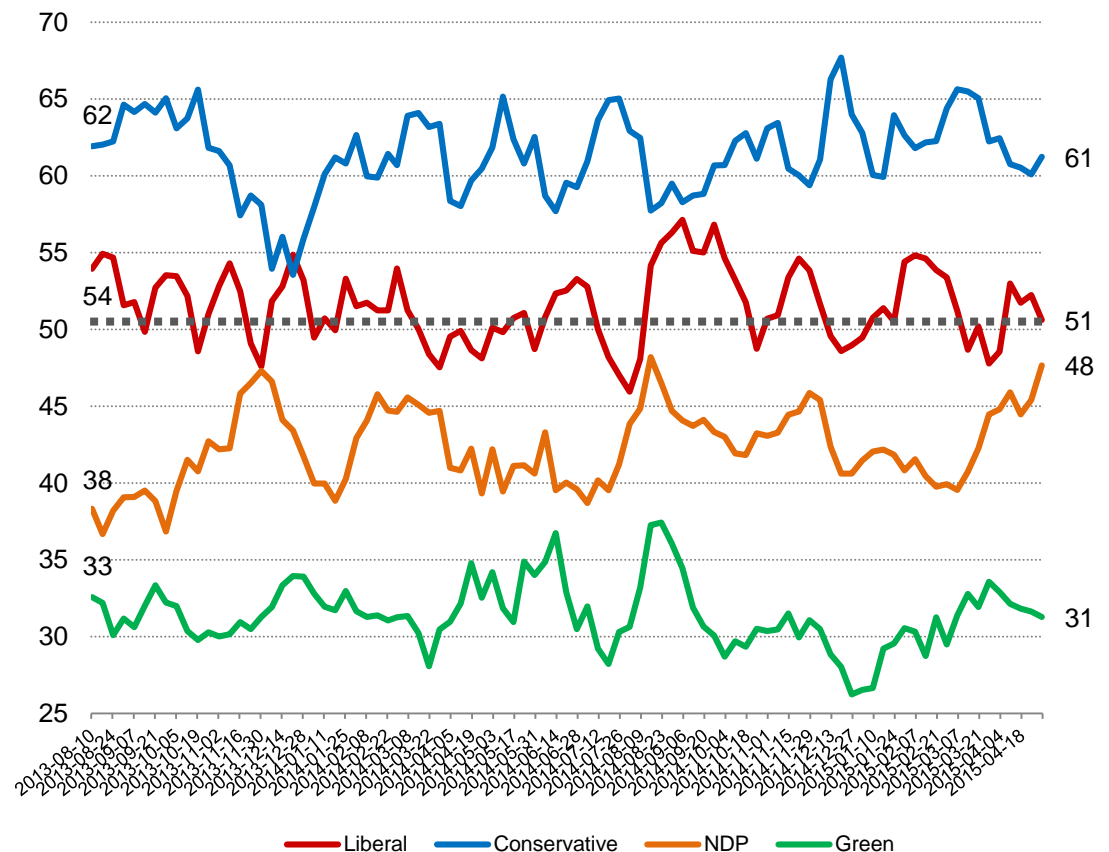
# Party Power Index



The Nanos Party Power Index Tracking for the Prairies is based on a composite of the following public opinion measures: the national ballot, which party individuals would consider voting for, the top two choices for Prime Minister, and whether each party leader has good leadership qualities. There are wider margins of accuracy for regional subsamples.

Contact: Nik Nanos  
Ottawa: (613) 234-4666 x 237  
Washington DC: (202) 697-9924  
nnanos@nanosresearch.com

**Prairies Weekly Index Tracking Scores**  
(Four week rolling average ending May 1<sup>st</sup>, 2015, n=200)



# Party Power Index



The Nanos Party Power Index Tracking for BC is based on a composite of the following public opinion measures: the national ballot, which party individuals would consider voting for, the top two choices for Prime Minister, and whether each party leader has good leadership qualities. There are wider margins of accuracy for regional subsamples.

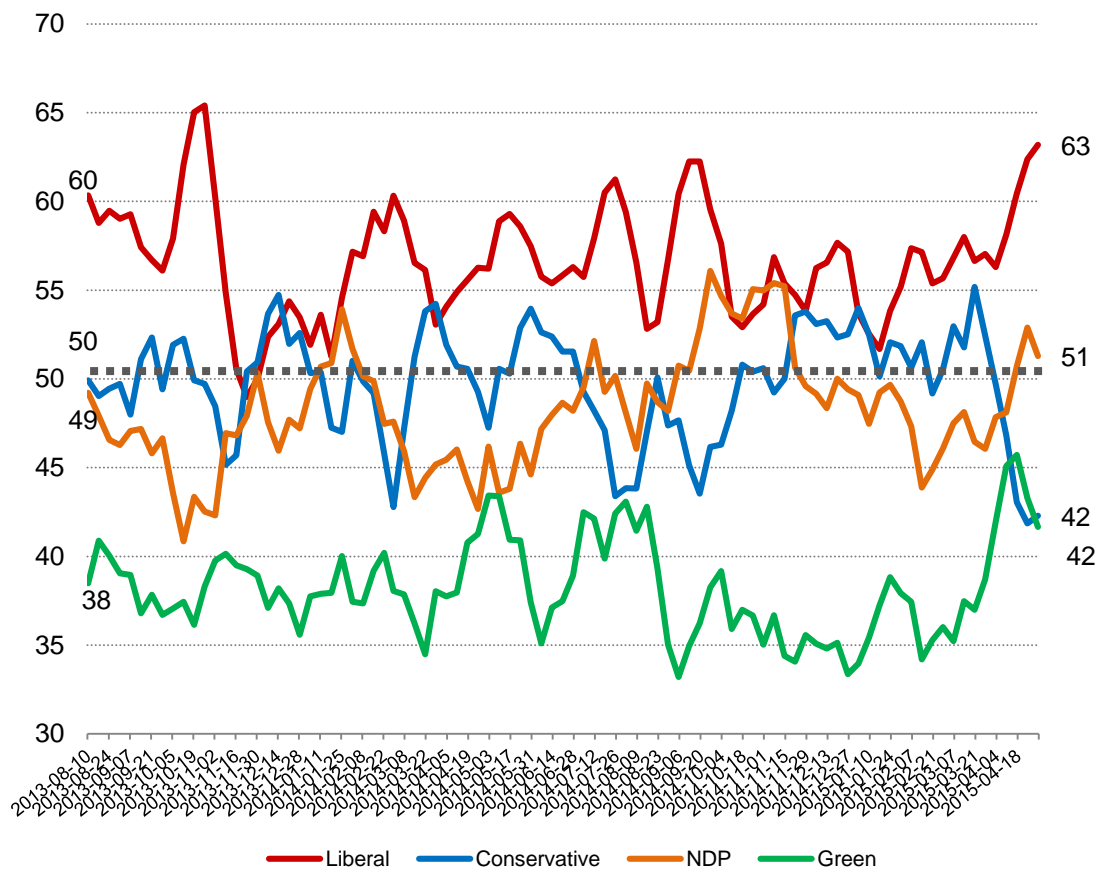
Contact: Nik Nanos

Ottawa: (613) 234-4666 x 237

Washington DC: (202) 697-9924

[nnanos@nanosresearch.com](mailto:nnanos@nanosresearch.com)

## *British Columbia Weekly Index Tracking Scores (Four week rolling average ending May 1<sup>st</sup>, 2015, n=152)*



# *Party Power Index Tracking by Age*

*Nanos Weekly Tracking*



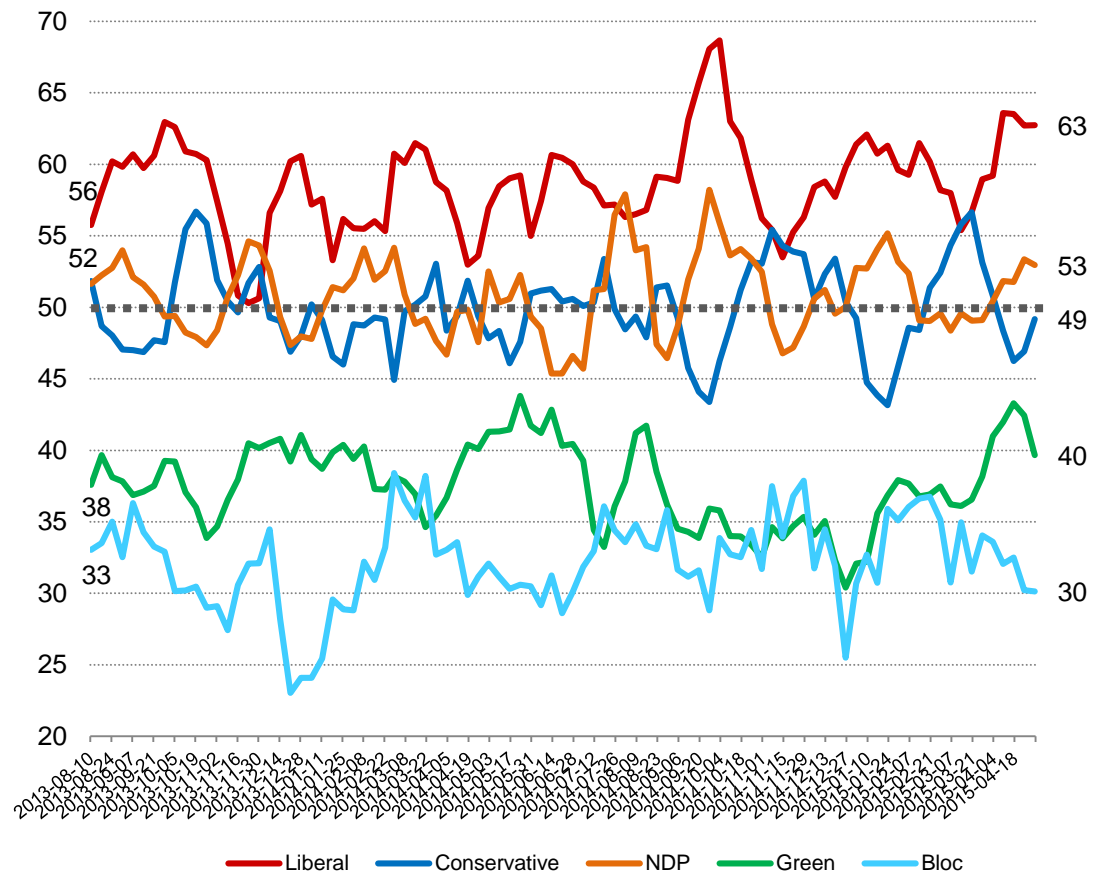
# Party Power Index



The Nanos Party Power Index Tracking for the 18 to 29 age group is based on a composite of the following public opinion measures: the national ballot, which party individuals would consider voting for, the top two choices for Prime Minister, and whether each party leader has good leadership qualities. There are wider margins of accuracy for age subsamples.

Contact: Nik Nanos  
Ottawa: (613) 234-4666 x 237  
Washington DC: (202) 697-9924  
nnanos@nanosresearch.com

**18 to 29 Weekly Index Tracking Scores**  
(Four week rolling average ending May 1<sup>st</sup>, 2015, n=205)





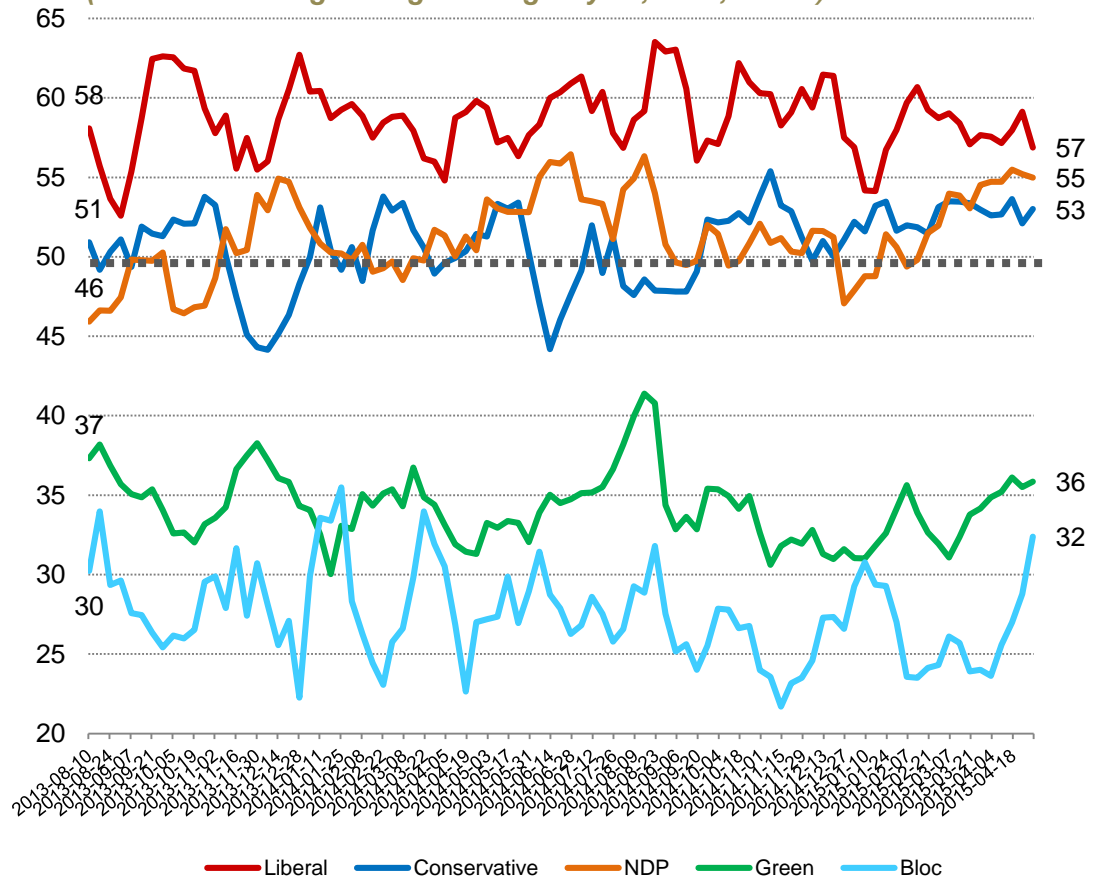
# Party Power Index



The Nanos Party Power Index Tracking for the 30 to 39 age group is based on a composite of the following public opinion measures: the national ballot, which party individuals would consider voting for, the top two choices for Prime Minister, and whether each party leader has good leadership qualities. There are wider margins of accuracy for age subsamples.

Contact: Nik Nanos  
Ottawa: (613) 234-4666 x 237  
Washington DC: (202) 697-9924  
nnanos@nanosresearch.com

## 30 to 39 Weekly Index Tracking Scores (Four week rolling average ending May 1<sup>st</sup>, 2015, n=169)



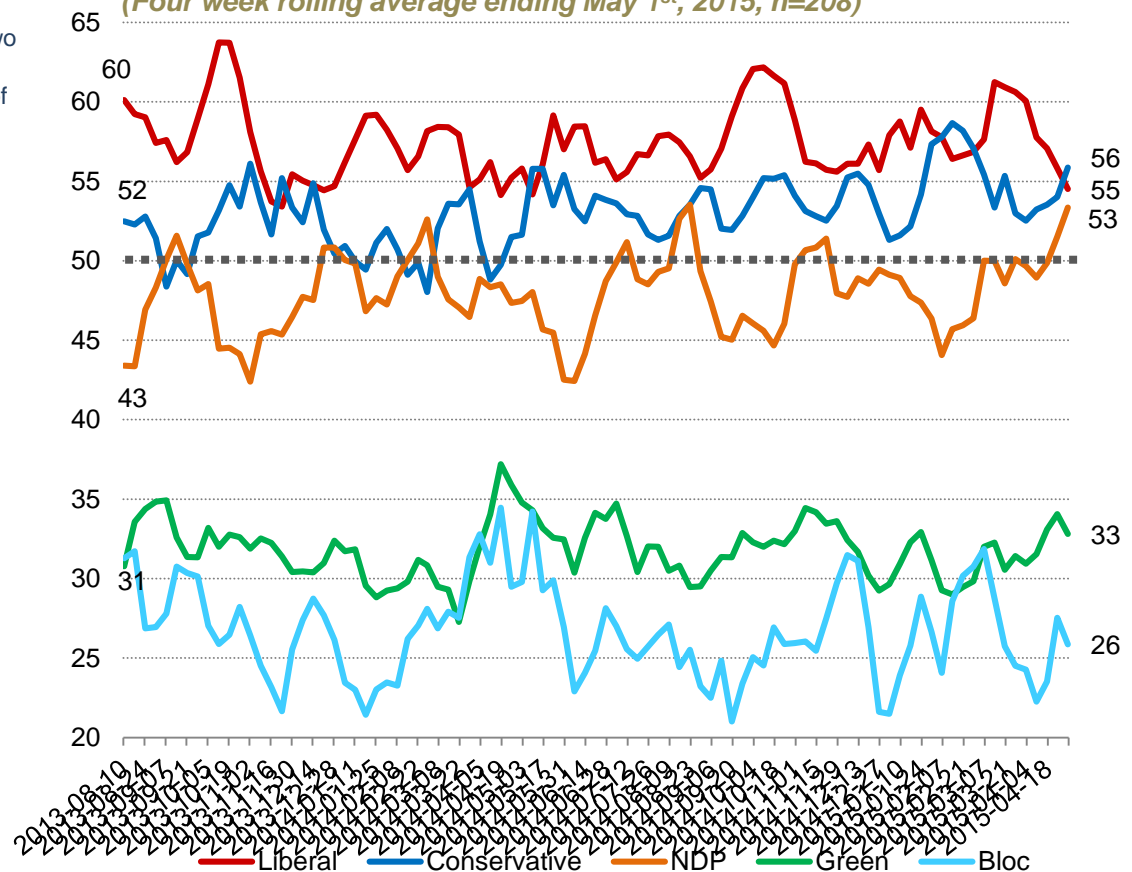
# Party Power Index



The Nanos Party Power Index Tracking for the 40 to 49 age group is based on a composite of the following public opinion measures: the national ballot, which party individuals would consider voting for, the top two choices for PM, and whether each party leader has good leadership qualities. There are wider margins of accuracy for age subsamples.

Contact: Nik Nanos  
Ottawa: (613) 234-4666 x 237  
Washington DC: (202) 697-9924  
nnanos@nanosresearch.com

**40 to 49 Weekly Index Tracking Scores**  
(Four week rolling average ending May 1<sup>st</sup>, 2015, n=208)



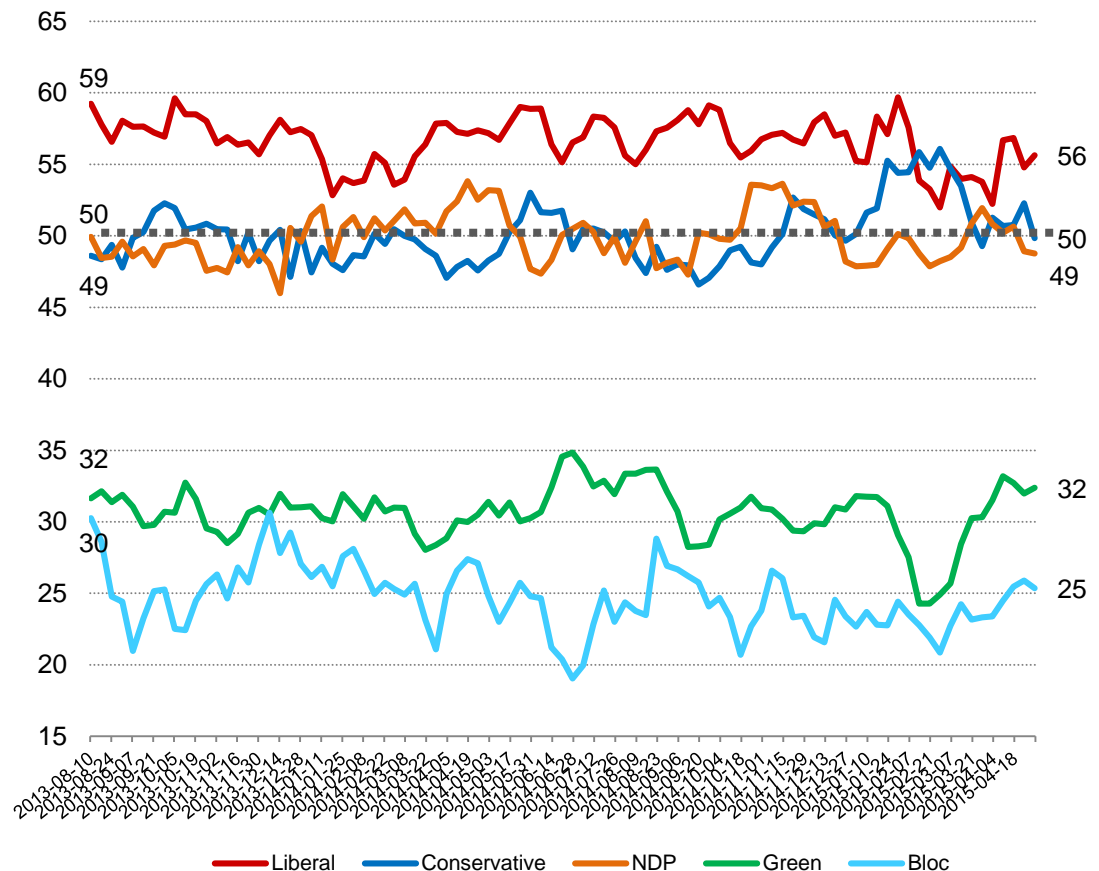
# Party Power Index



The Nanos Party Power Index Tracking for the 50 to 59 age group is based on a composite of the following public opinion measures: the national ballot, which party individuals would consider voting for, the top two choices for Prime Minister, and whether each party leader has good leadership qualities. There are wider margins of accuracy for age subsamples.

Contact: Nik Nanos  
Ottawa: (613) 234-4666 x 237  
Washington DC: (202) 697-9924  
nnanos@nanosresearch.com

## 50 to 59 Weekly Index Tracking Scores (Four week rolling average ending May 1<sup>st</sup>, 2015, n=178)



# Party Power Index



The Nanos Party Power Index Tracking for the 60 plus age group is based on a composite of the following public opinion measures: the national ballot, which party individuals would consider voting for, the top two choices for Prime Minister, and whether each party leader has good leadership qualities. There are wider margins of accuracy for age subsamples.

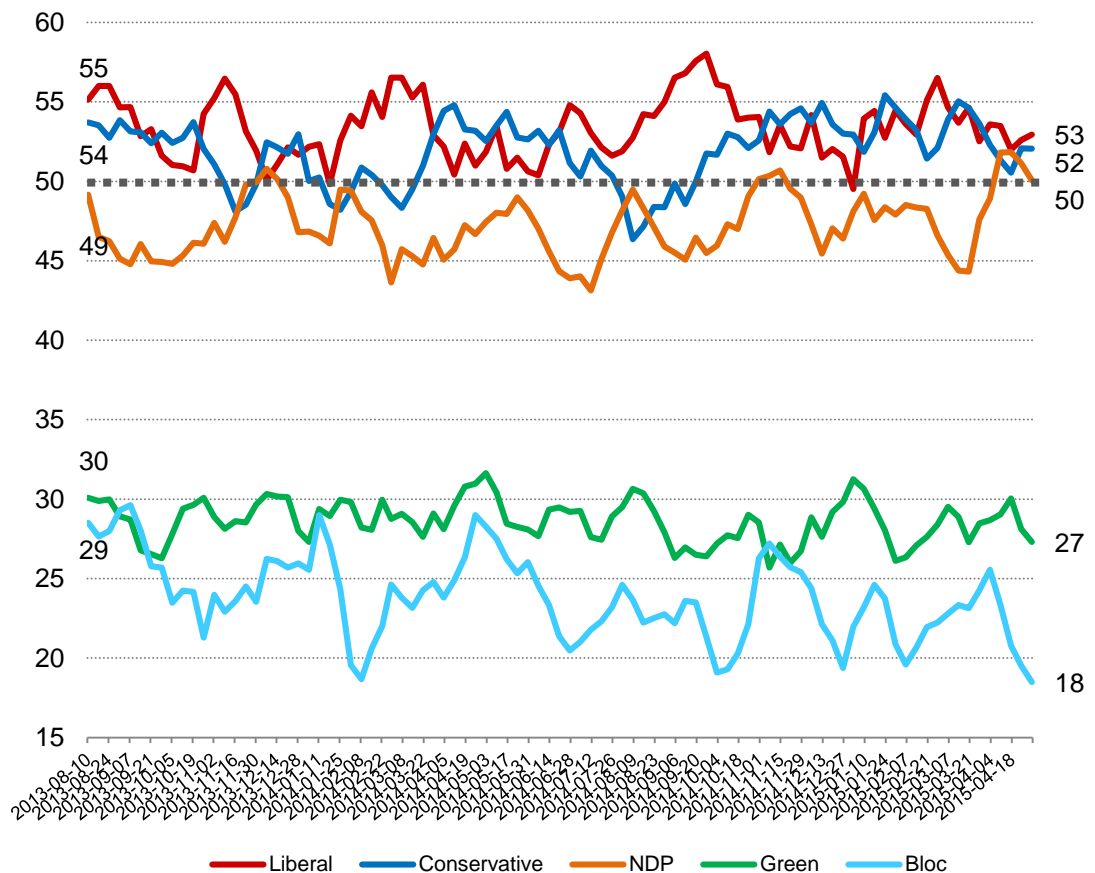
Contact: Nik Nanos

Ottawa: (613) 234-4666 x 237

Washington DC: (202) 697-9924

[nnanos@nanosresearch.com](mailto:nnanos@nanosresearch.com)

## 60 plus Weekly Index Tracking Scores (Four week rolling average ending May 1<sup>st</sup>, 2015, n=239)



# *Party Power Index Tracking by Gender*

*Nanos Weekly Tracking*





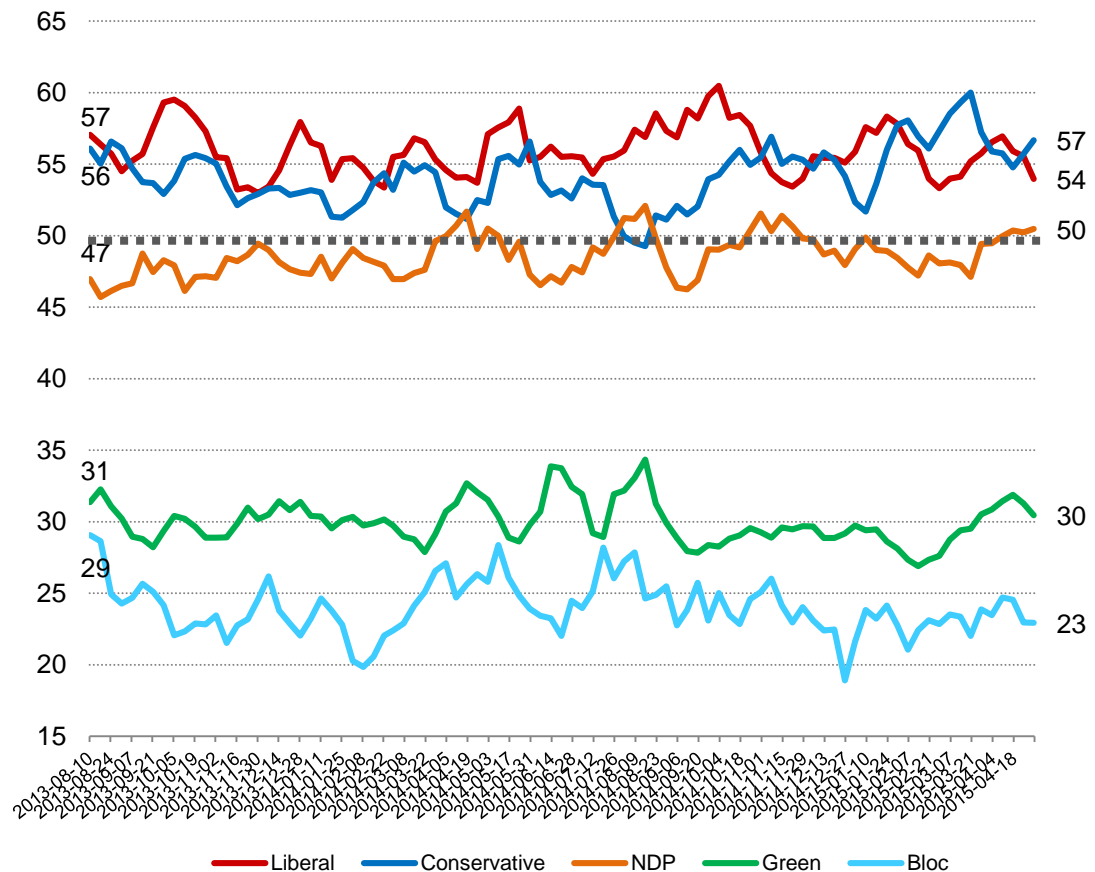
# Party Power Index



The Nanos Party Power Index Tracking for males is based on a composite of the following public opinion measures: the national ballot, which party individuals would consider voting for, the top two choices for Prime Minister, and whether each party leader has good leadership qualities. There are wider margins of accuracy for gender subsamples.

Contact: Nik Nanos  
Ottawa: (613) 234-4666 x 237  
Washington DC: (202) 697-9924  
nnanos@nanosresearch.com

**Male Weekly Index Tracking Scores**  
(Four week rolling average ending May 1<sup>st</sup>, 2015, n=493)



# Party Power Index



The Nanos Party Power Index Tracking for females is based on a composite of the following public opinion measures: the national ballot, which party individuals would consider voting for, the top two choices for Prime Minister, and whether each party leader has good leadership qualities. There are wider margins of accuracy for gender subsamples.

Contact: Nik Nanos

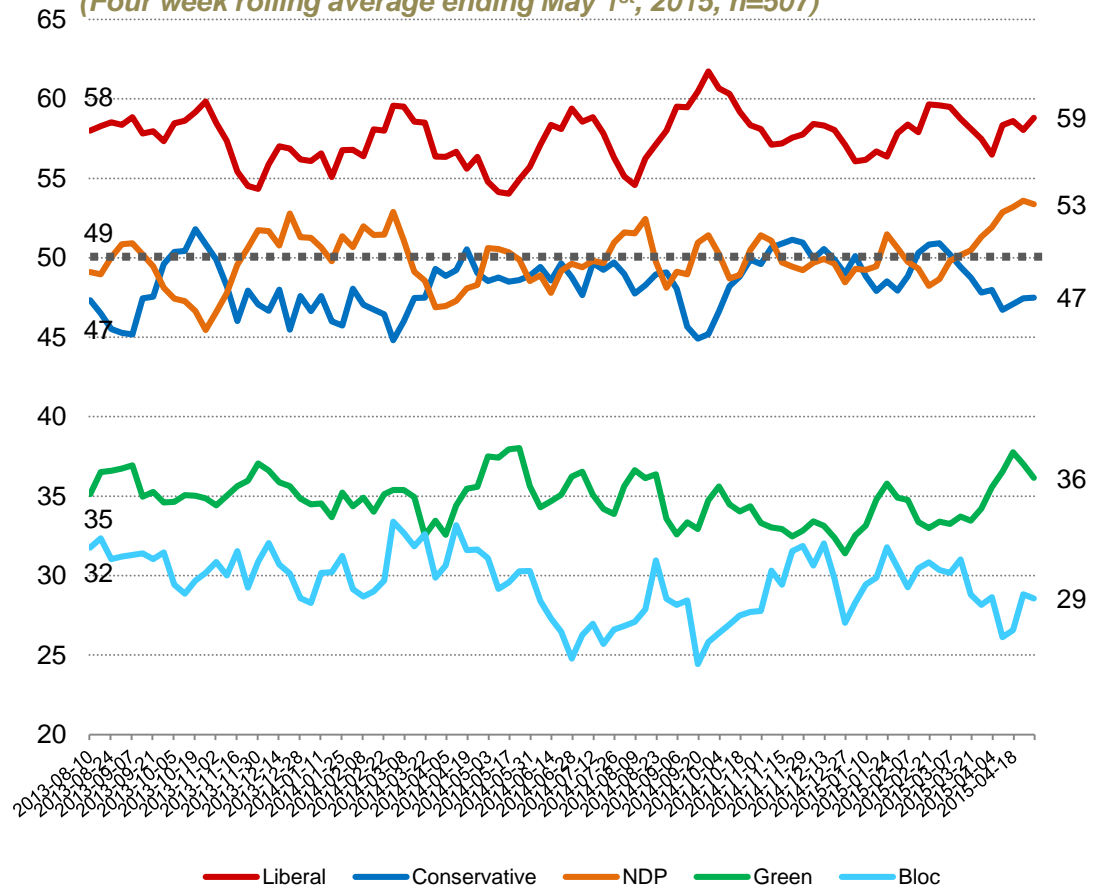
Ottawa: (613) 234-4666 x 237

Washington DC: (202) 697-9924

nnanos@nanosresearch.com

## Female Weekly Index Tracking Scores

(Four week rolling average ending May 1<sup>st</sup>, 2015, n=507)



# *National Political Tracking Numbers*

*Nanos Weekly Tracking*



**NANOS**

*A proven track  
record of accuracy*

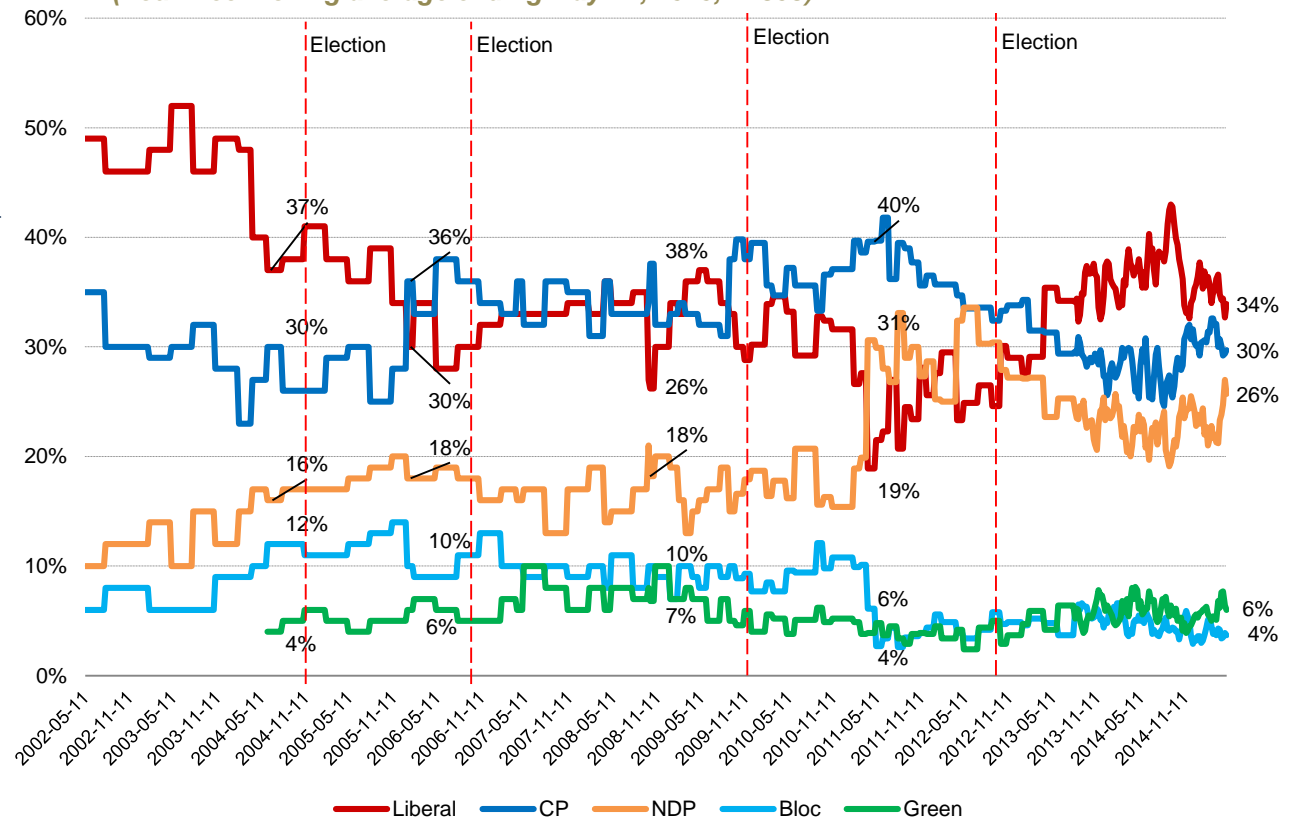
# National Ballot



**Question:** For those parties you would consider voting for federally, could you please rank your top two current local preferences?

Contact: Nik Nanos  
Ottawa: (613) 234-4666 x 237  
Washington DC: (202) 697-9924  
nnanos@nanosresearch.com

**Weekly Tracking – First Ranked Choice**  
(Four week rolling average ending May 1<sup>st</sup>, 2015, n=858)



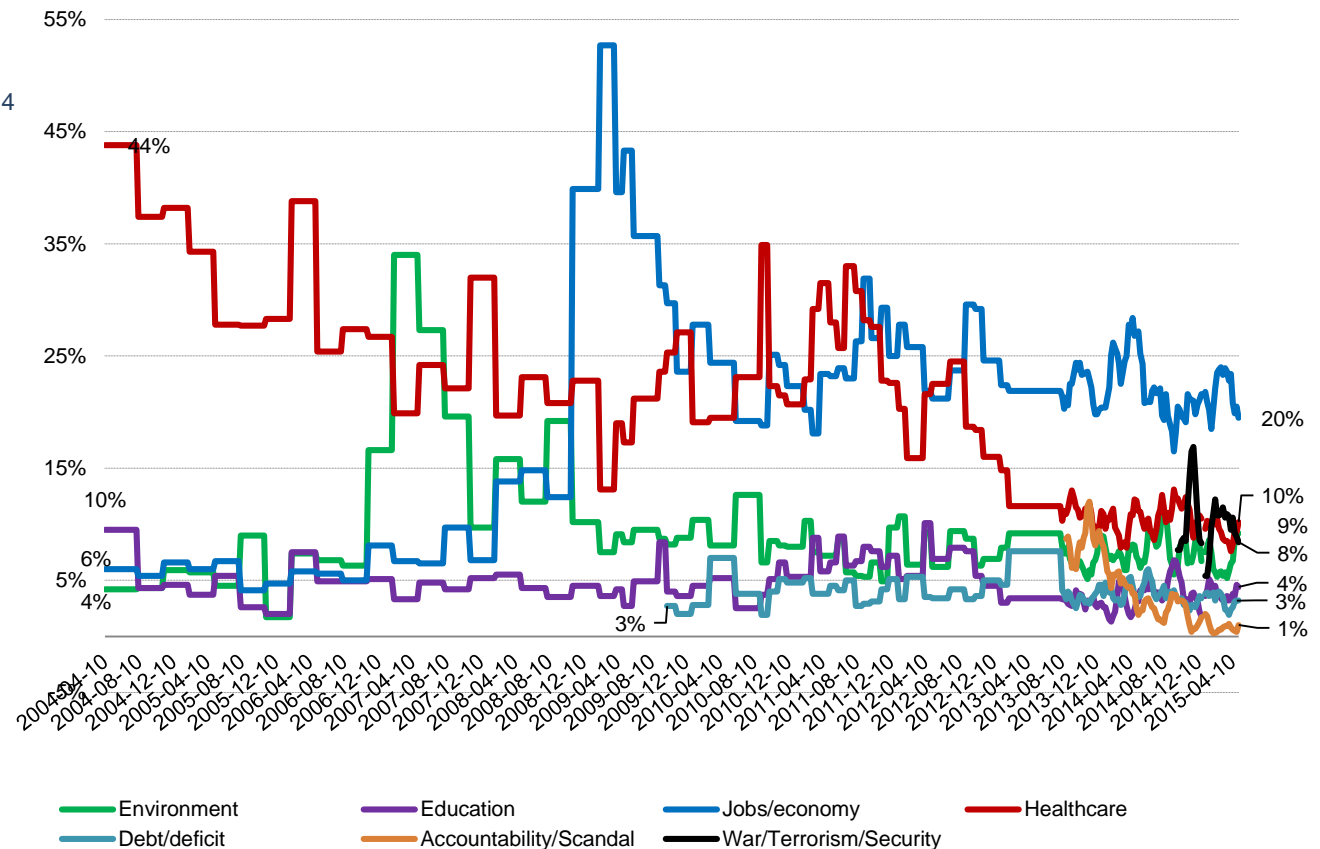
# National Issue



**Question:** What is your most important NATIONAL issue of concern?

Contact: Nik Nanos  
Ottawa: (613) 234-4666 x 237  
Washington DC: (202) 697-9924  
nnanos@nanosresearch.com

## Weekly Tracking (Four week rolling average ending May 1st, 2015, n=1,000)





# *Federal Party Accessible Voters*

*Nanos Weekly Tracking*



*A proven track  
record of accuracy*

# Consider Conservative NANOS

**Question:** For each of the following federal political parties, please tell me if you would consider or not consider voting for it.  
[RANDOMIZE] Conservative Party

Contact: Nik Nanos

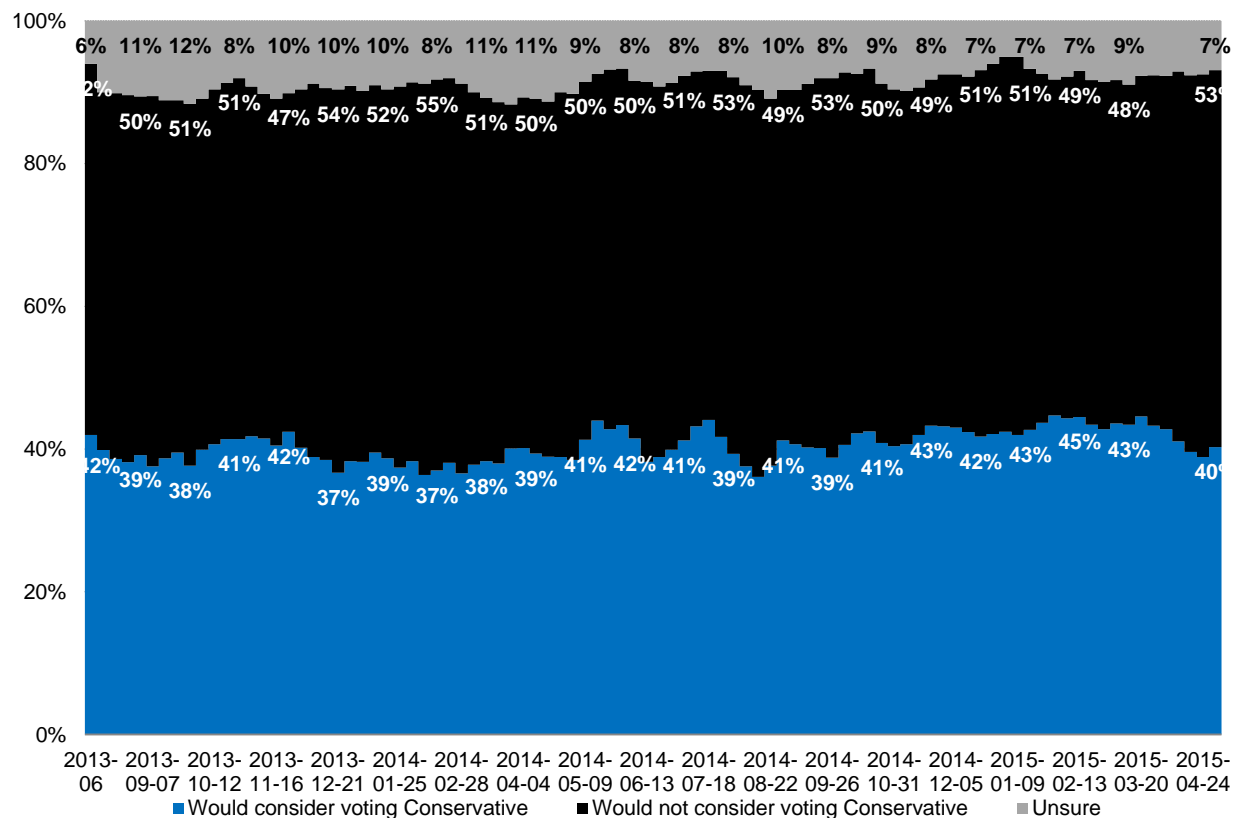
Ottawa: (613) 234-4666 x 237

Washington DC: (202) 697-9924

[nnanos@nanosresearch.com](mailto:nnanos@nanosresearch.com)

## National – Weekly Tracking

(Four week rolling average ending May 1<sup>st</sup>, 2015, n=1,000)



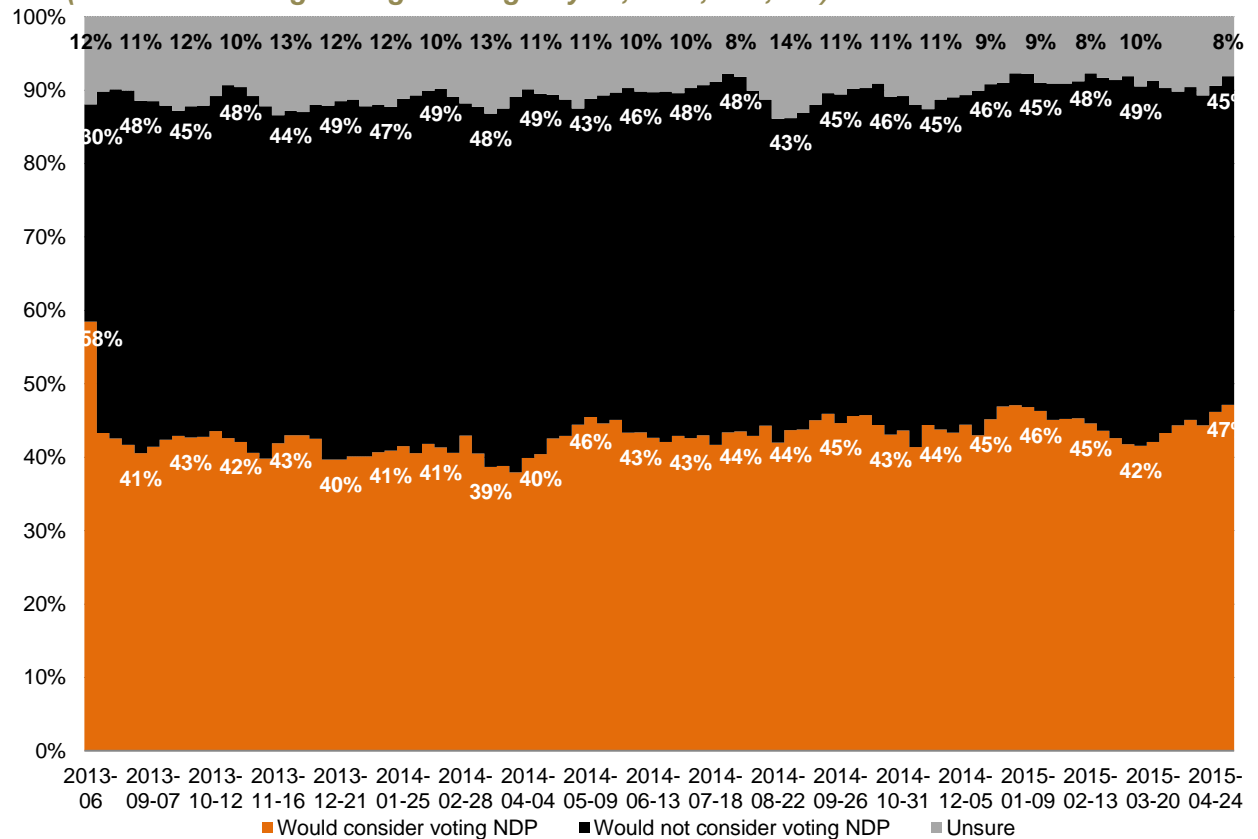
# Consider NDP



**Question:** For each of the following federal political parties, please tell me if you would consider or not consider voting for it.  
[RANDOMIZE] NDP

Contact: Nik Nanos  
Ottawa: (613) 234-4666 x 237  
Washington DC: (202) 697-9924  
nnanos@nanosresearch.com

**National – Weekly Tracking**  
(Four week rolling average ending May 1<sup>st</sup>, 2015, n=1,000)



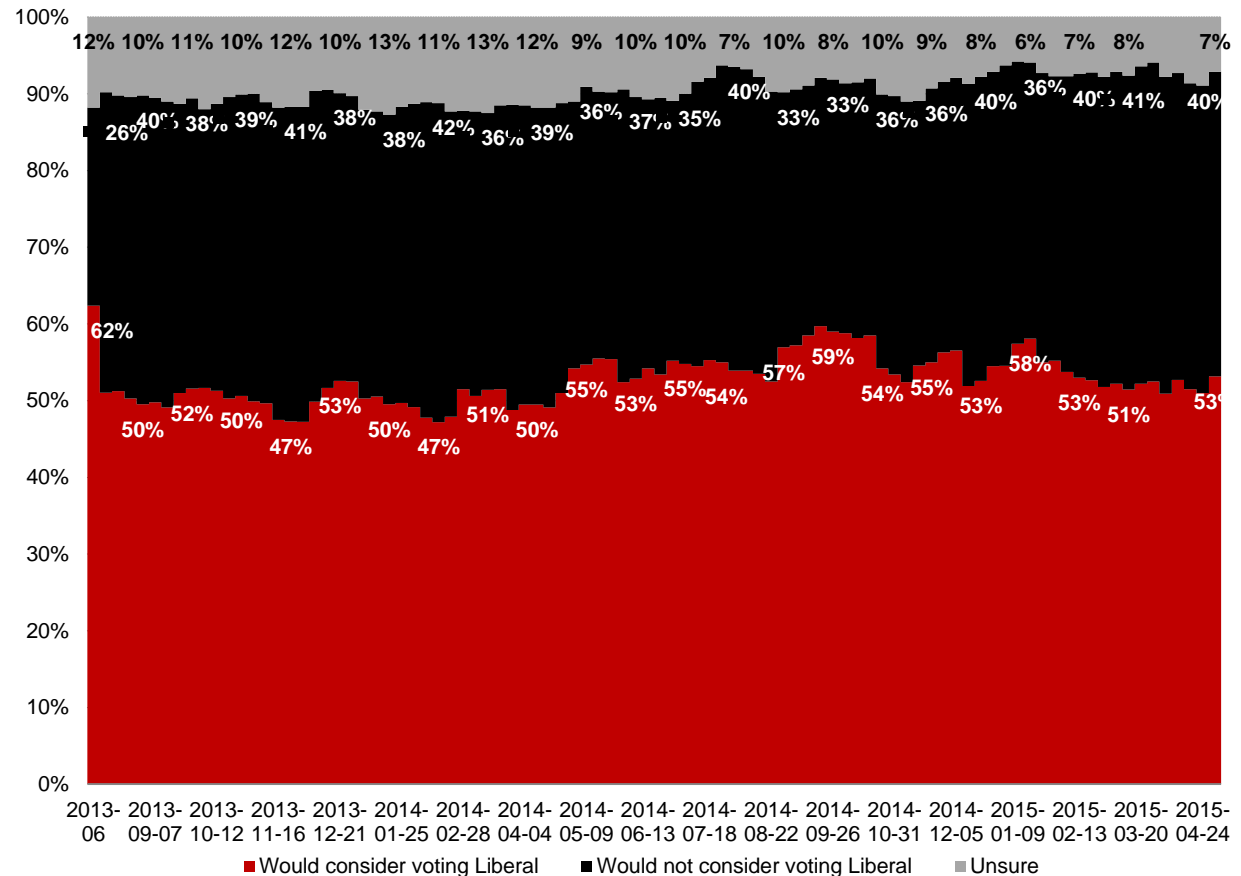
# Consider Liberal



**Question:** For each of the following federal political parties, please tell me if you would consider or not consider voting for it.  
[RANDOMIZE] Liberal Party

Contact: Nik Nanos  
Ottawa: (613) 234-4666 x 237  
Washington DC: (202) 697-9924  
nnanos@nanosresearch.com

**National – Weekly Tracking**  
(Four week rolling average ending May 1<sup>st</sup>, 2015, n=1,000)



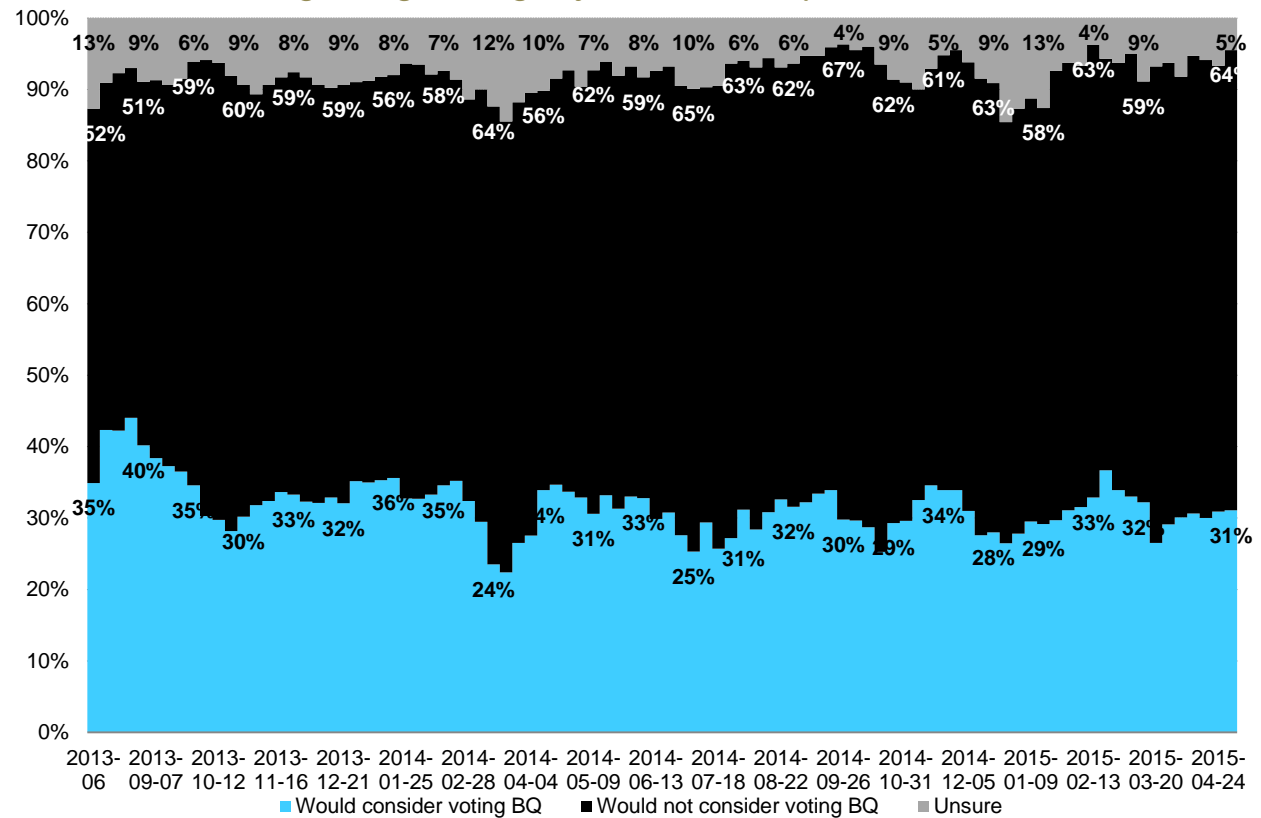
# Consider Bloc



**Question:** For each of the following federal political parties, please tell me if you would consider or not consider voting for it. [RANDOMIZE] Bloc Québécois

Contact: Nik Nanos  
Ottawa: (613) 234-4666 x 237  
Washington DC: (202) 697-9924  
nnanos@nanosresearch.com

**Quebec only – Weekly Tracking**  
**Four week rolling average ending May 1<sup>st</sup>, 2015, n=248)**





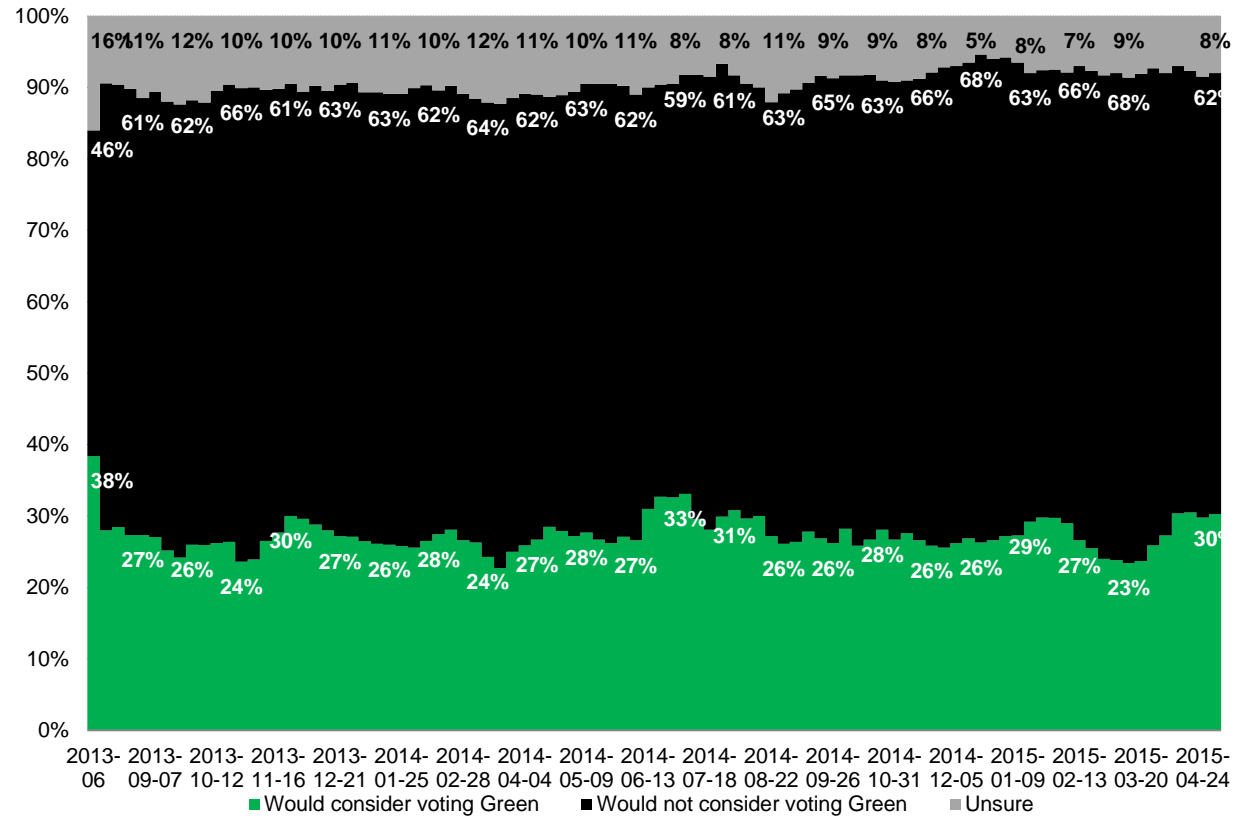
# Consider Green



**Question:** For each of the following federal political parties, please tell me if you would consider or not consider voting for it.  
[RANDOMIZE] Green Party

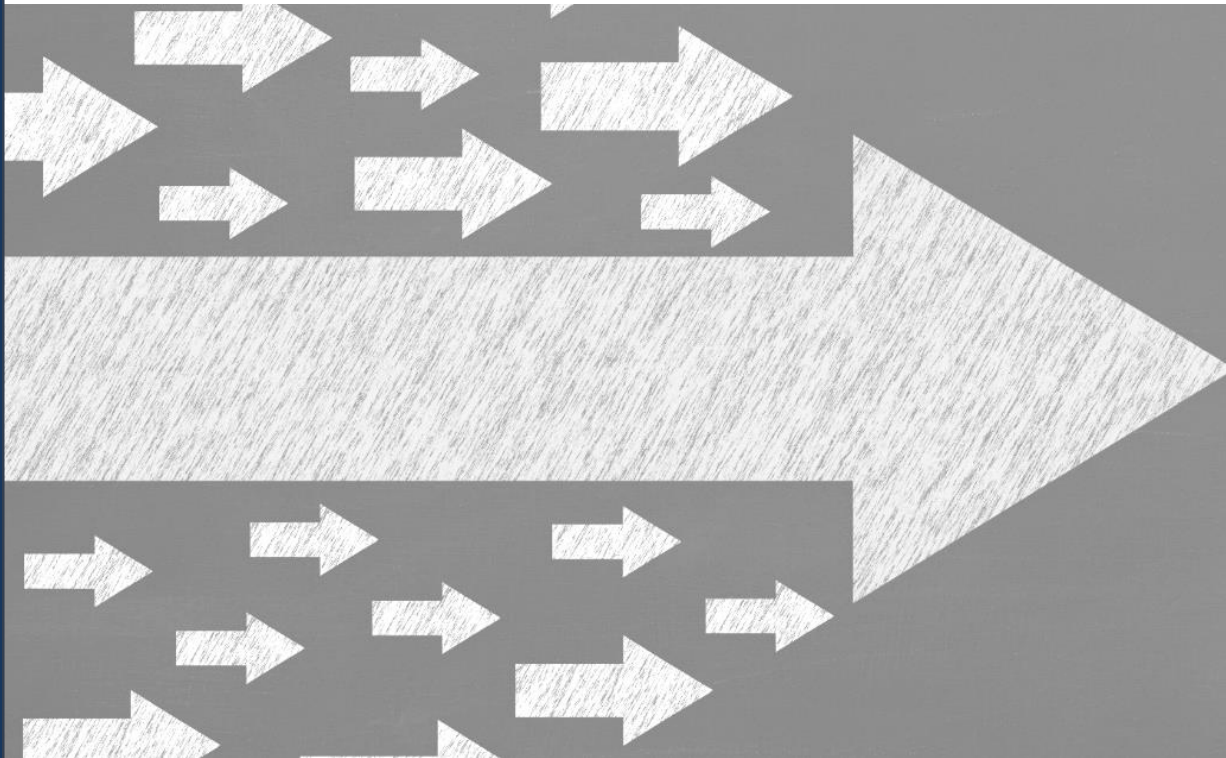
Contact: Nik Nanos  
Ottawa: (613) 234-4666 x 237  
Washington DC: (202) 697-9924  
nnanos@nanosresearch.com

**National – Weekly Tracking**  
(Four week rolling average ending May 1<sup>st</sup>, 2015, n=1,000)



# *Tracking on the Federal Political Leaders*

*Nanos Weekly Tracking*



**NANOS**

*Winning solutions  
for decision-makers*

# Prime Minister



**Question:** Of the current federal political party leaders, could you please rank your top two current local preferences for Prime Minister? [ROTATE PARTY LEADERS]

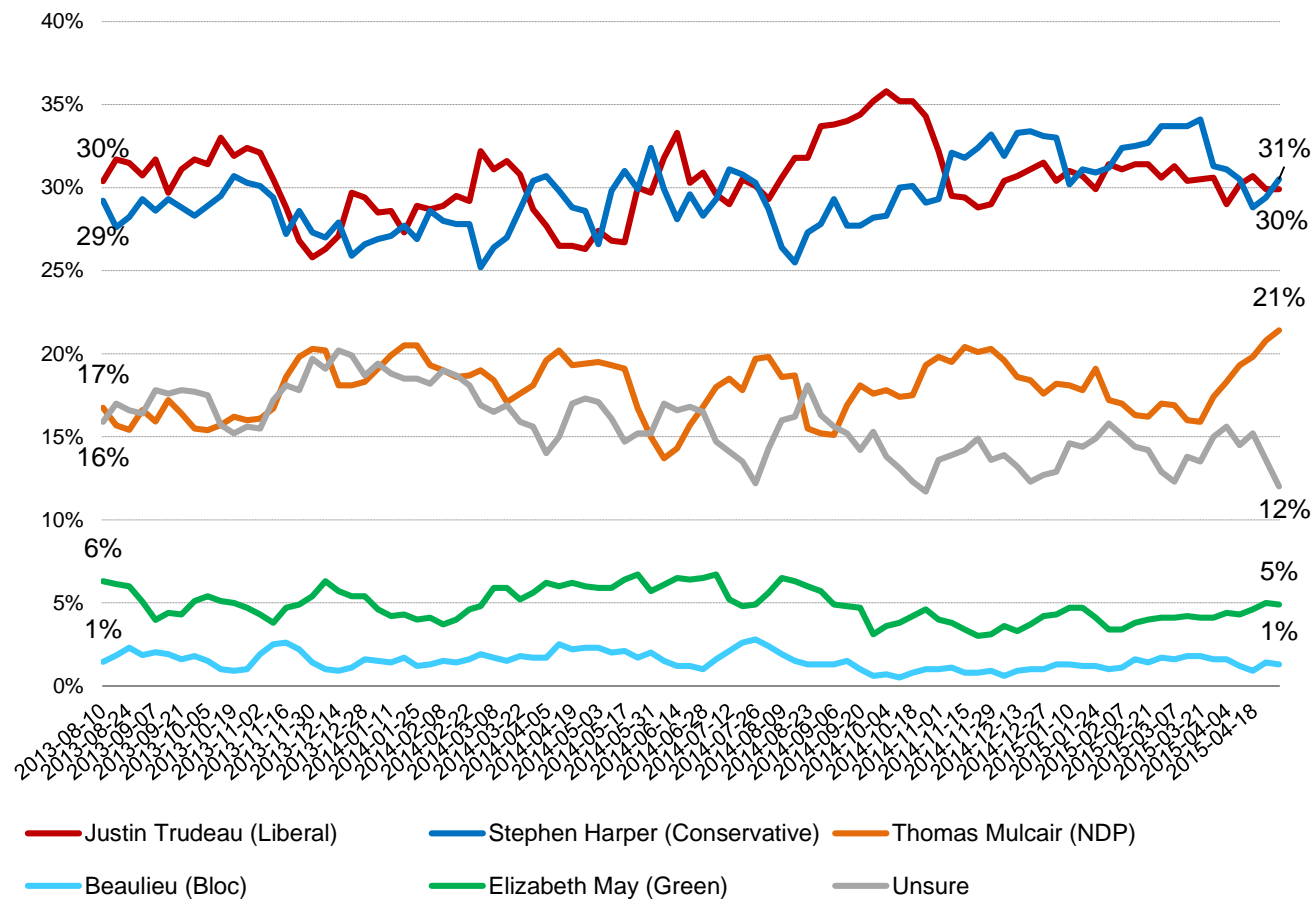
Contact: Nik Nanos

Ottawa: (613) 234-4666 x 237

Washington DC: (202) 697-9924

nnanos@nanosresearch.com

## National – Weekly Tracking – First Ranked Choice (Four week rolling average ending May 1<sup>st</sup>, 2015, n=1,000)



# Harper



**Question:** For each of the following federal political party leaders, do you think they have or do not have the qualities to be a good political leader? [RANDOMIZE] Stephen Harper

Contact: Nik Nanos

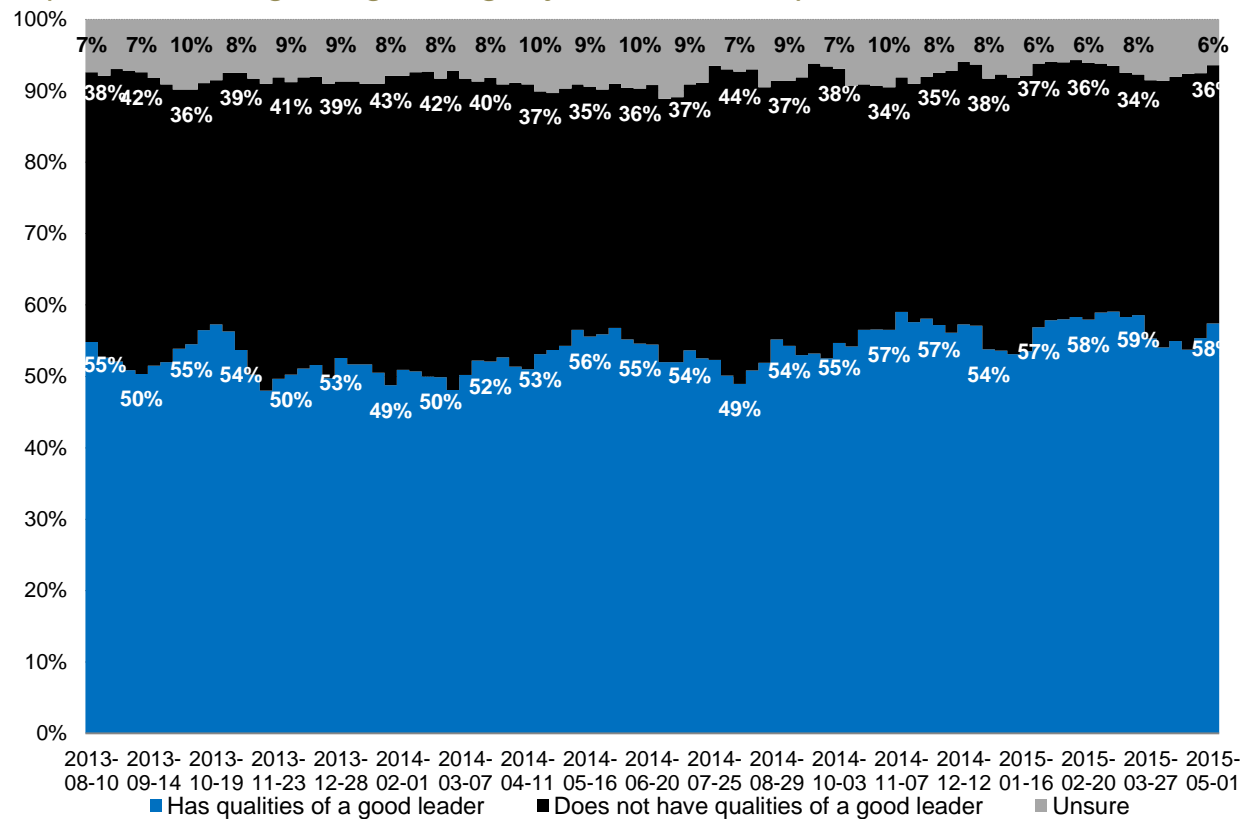
Ottawa: (613) 234-4666 x 237

Washington DC: (202) 697-9924

nnanos@nanosresearch.com

## National – Weekly Tracking

(Four week rolling average ending May 1<sup>st</sup>, 2015, n=1,000)



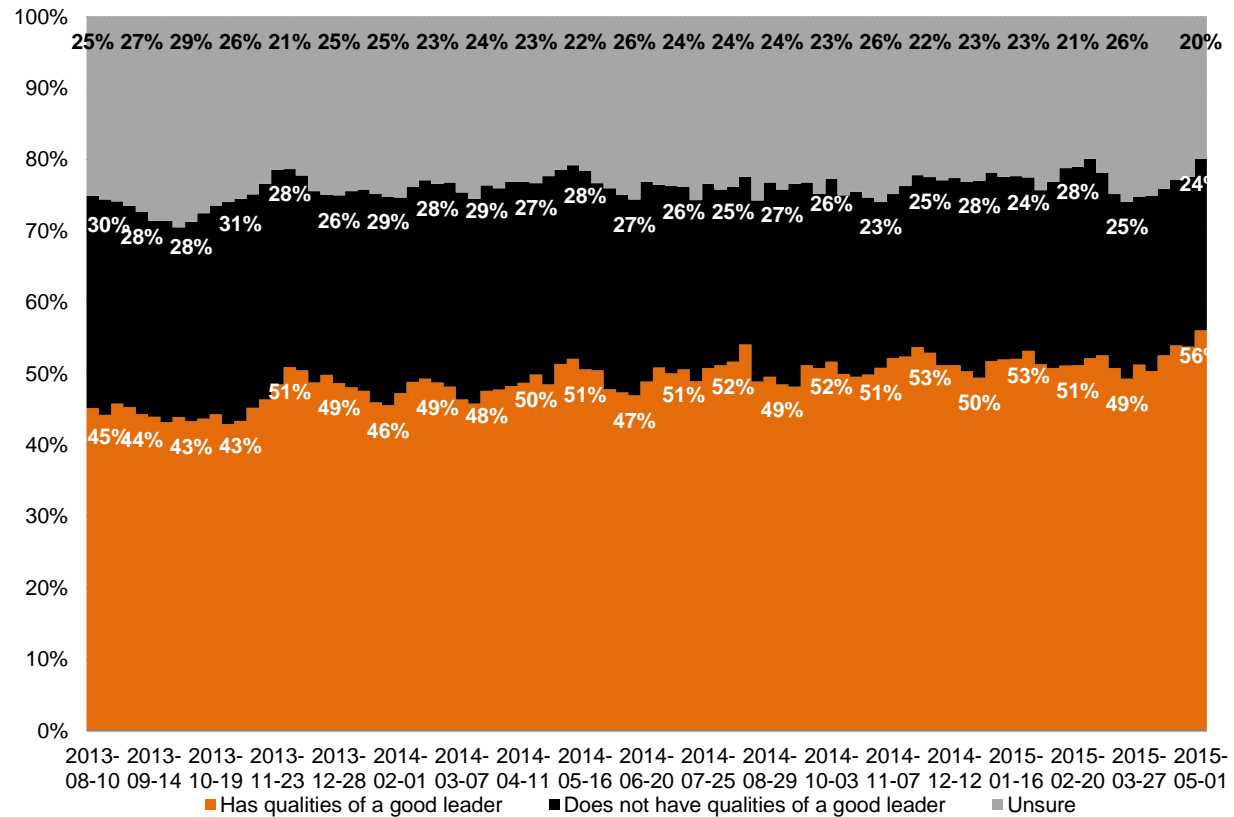
# Mulcair



**Question:** For each of the following federal political party leaders, do you think they have or do not have the qualities to be a good political leader? [RANDOMIZE] Thomas Mulcair

Contact: Nik Nanos  
Ottawa: (613) 234-4666 x 237  
Washington DC: (202) 697-9924  
nnanos@nanosresearch.com

## National – Weekly Tracking (Four week rolling average ending May 1<sup>st</sup>, 2015, n=1,000)





# Trudeau



**Question:** For each of the following federal political party leaders, do you think they have or do not have the qualities to be a good political leader? [RANDOMIZE] Justin Trudeau

Contact: Nik Nanos

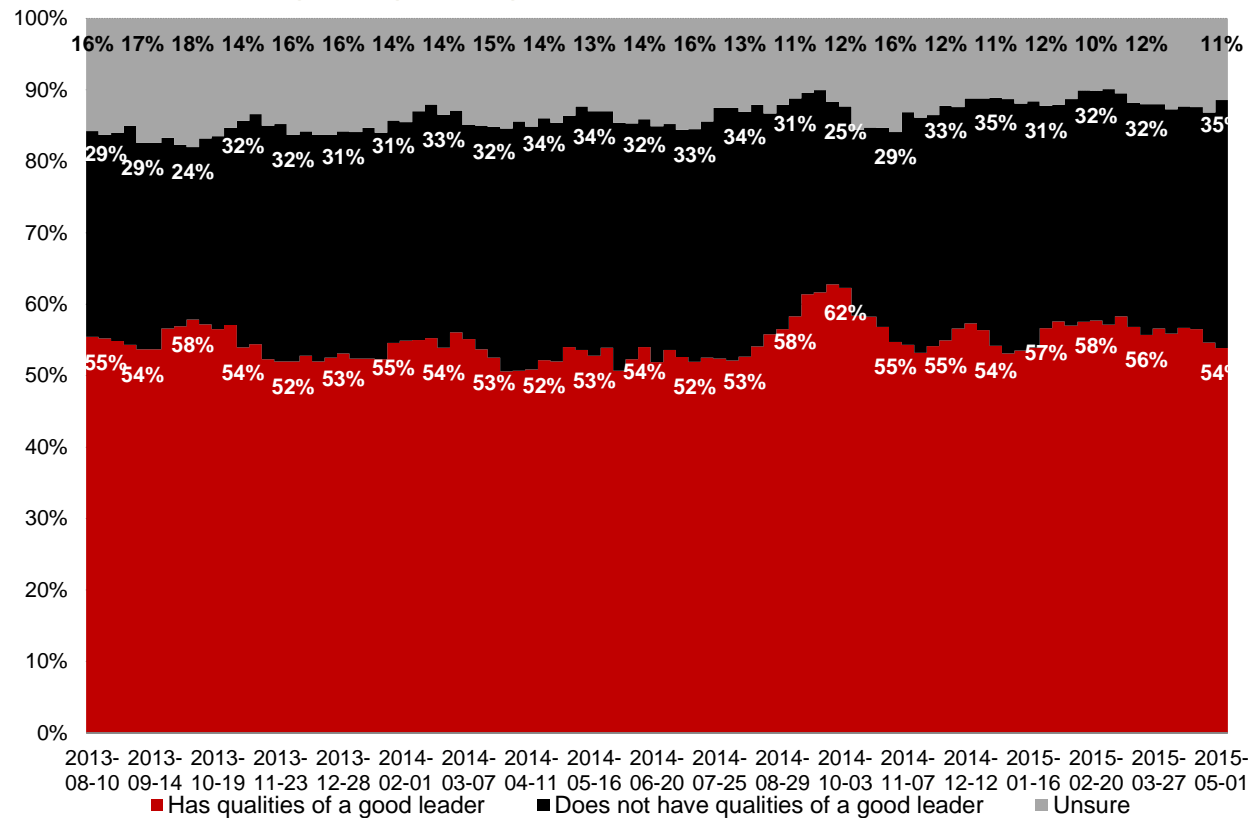
Ottawa: (613) 234-4666 x 237

Washington DC: (202) 697-9924

nnanos@nanosresearch.com

## National – Weekly Tracking

(Four week rolling average ending May 1<sup>st</sup>, 2015, n=1,000)



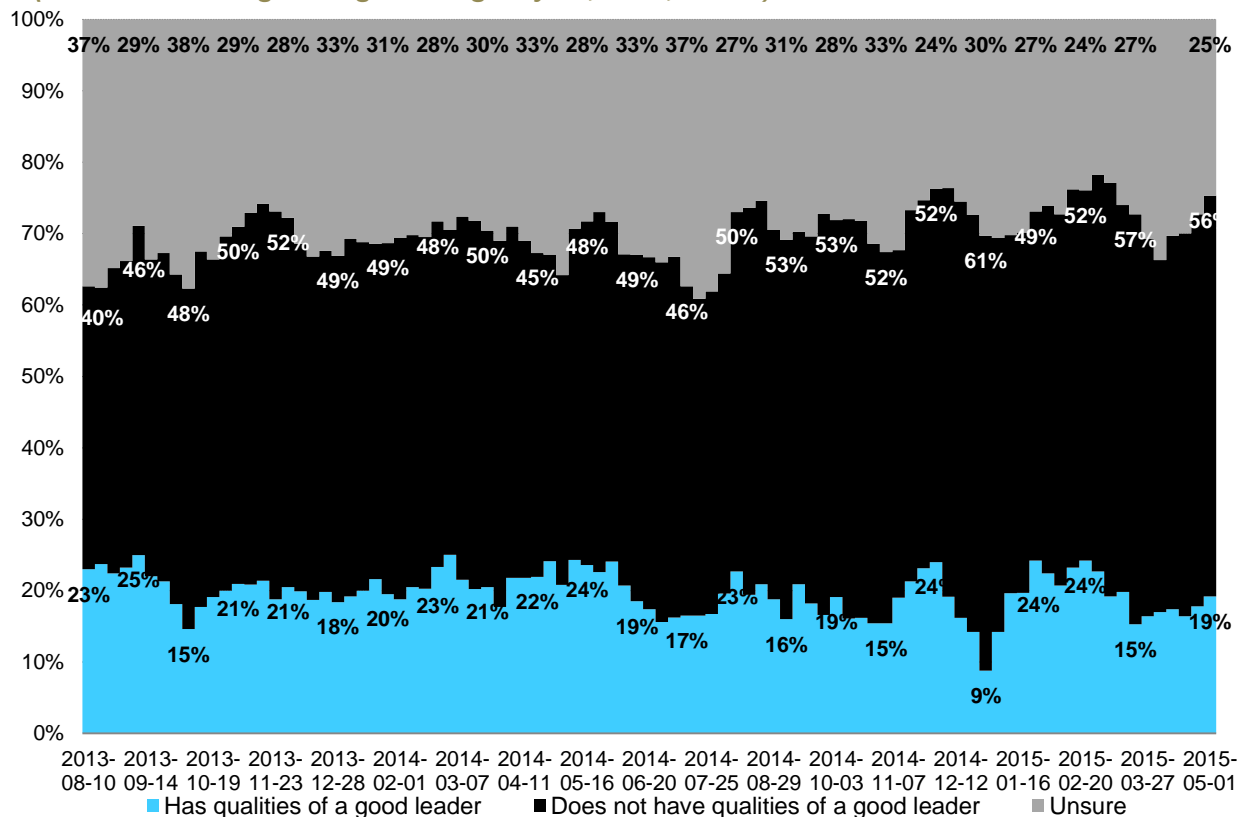
# Beaulieu



**Question:** For each of the following federal political party leaders, do you think they have or do not have the qualities to be a good political leader? [RANDOMIZE] Mario Beaulieu

Contact: Nik Nanos  
Ottawa: (613) 234-4666 x 237  
Washington DC: (202) 697-9924  
nnanos@nanosresearch.com

## Quebec only – Weekly Tracking (Four week rolling average ending May 1<sup>st</sup>, 2015, n=248)



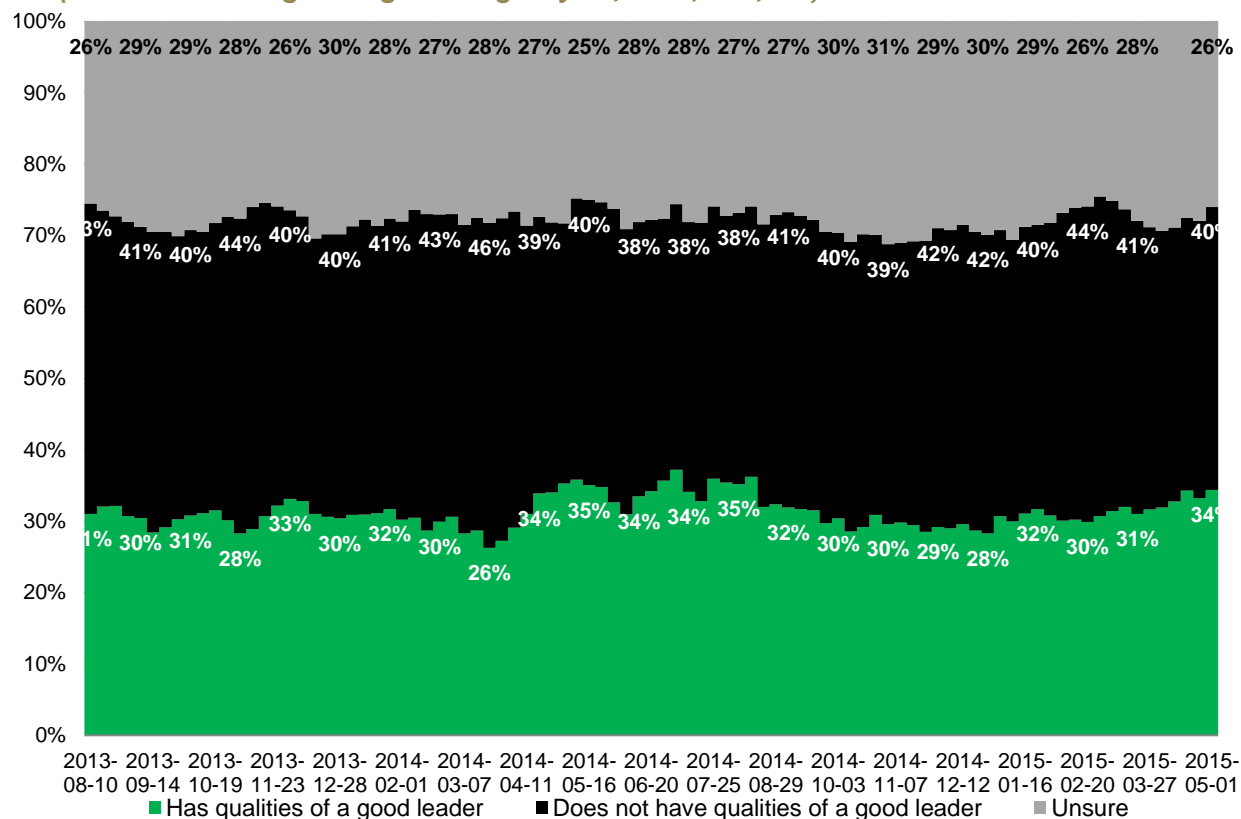
# May



**Question:** For each of the following federal political party leaders, do you think they have or do not have the qualities to be a good political leader? [RANDOMIZE] Elizabeth May

Contact: Nik Nanos  
 Ottawa: (613) 234-4666 x 237  
 Washington DC: (202) 697-9924  
 nnanos@nanosresearch.com

## National – Weekly Tracking (Four week rolling average ending May 1<sup>st</sup>, 2015, n=1,000)





# Methodology

## *Survey Methodology*

The Weekly Nanos Party Power Index Tracking is produced by the Nanos Research Corporation, headquartered in Canada, which operates in Canada and the United States. The data is based on random telephone interviews with 1,000 Canadians (land- and cell-lines), using a four week rolling average of 250 respondents each week, 18 years of age and over. The random sample of 1,000 respondents may be weighted by age and gender using the latest census information for Canada. The interviews are compiled into a four week rolling average of 1,000 interviews, where each week the oldest group of 250 interviews is dropped and a new group of 250 interviews is added. The views of 1,000 respondents are compiled into a diffusion brand index for each party that goes from 0 to 100, where 0 means that the party has no brand strength and 100 means it has maximum brand strength. A score above 50 is an indication of brand strength for the party and its leader at this time.

The current report is based on a four week rolling average of Canadian opinion ending May 1<sup>st</sup>, 2015.

A random telephone survey of 1,000 Canadians is accurate 3.1 percentage points, plus or minus, 19 times out of 20.



## About Nanos

Nanos is one of North America's most trusted research and strategy organizations. Our team of professionals is regularly called upon by senior executives to deliver superior intelligence and market advantage whether it be helping to chart a path forward, managing a reputation or brand risk or understanding the trends that drive success. Services range from traditional telephone surveys, through to elite in-depth interviews, online research and focus groups. Nanos clients range from Fortune 500 companies through to leading advocacy groups interested in understanding and shaping the public landscape. Whether it is understanding your brand or reputation, customer needs and satisfaction, engaging employees or testing new ads or products, Nanos provides insight you can trust.



View our brochure

### **Nik Nanos** FMRIA

Chairman, Nanos Research Group  
Ottawa (613) 234-4666 ext. 237  
Washington DC (202) 697-9924  
[nnanos@nanosresearch.com](mailto:nnanos@nanosresearch.com)