

Weekly Nanos Party Power Index Tracking

Nanos Weekly Tracking, ending April 10, 2015
(released April 15, 2015)



*Ideas powered by
world-class data*

Weekly Nanos Party Power Index



Liberals top on the Nanos Index, NDP and Greens trending up,
Harper and Tories trending down
(Released 04/15/2015)

Nanos tracking is now fully into the period that includes the Duffy trial – the last two weeks of polling suggests a slide for Harper on the preferred PM front, having the qualities of a good leader and also the level of accessible voters for the Tories. The Liberals remain steady while now both the NDP and the Greens are trending positively in the Nanos Party Power Index.

The Nanos Party Power Index has the Liberals with the highest score, 58 points out of 100 with the NDP and Conservatives both at 51 points. The Green Party registered 34 points and the BQ 25 points (QC only).

The Nanos Party Power Index comprises a basket of political goods that includes ballot preferences, accessible voters, preferred PM views and evaluations of the leaders. It is modeled similar to a standard confidence index. It is a random telephone survey conducted with live agents, reaching out to Canadians through a land- and cell-line dual frame sample.

For the weekly preferred Prime Minister measure Harper stands at 31 per cent followed by Trudeau at 30 per cent, Mulcair at 19 per cent, May at four per cent and 15 per cent were undecided.

Asked a series of independent questions as to whether they would consider or not consider voting for each of the federal parties, 53 per cent of Canadians would consider voting Liberal while 45 per cent would consider voting NDP, 41 per cent would consider voting Conservative and 30 per cent would consider voting for the Greens.

Party Power Index



The Nanos Party Power Index Tracking for Canada is based on a composite of the following public opinion measures: the national ballot, which party individuals would consider voting for, the top two choices for Prime Minister, and whether each party leader has good leadership qualities.

Contact: Nik Nanos
Ottawa: (613) 234-4666 x 237
Washington DC: (202) 697-9924
nnanos@nanosresearch.com

Data Summary

	This Week	Last Week	4 Weeks Ago	3 Months Ago	1 Year Ago (Apr 2014)	12 Month High	12 Month Low	12 Month Average
Canada Party Power Index								
Liberal	57.6	56.5	56.4	56.8	55.3	60.7	54.8	56.9
NDP	51.4	50.7	49.0	49.5	48.9	52.2	47.4	49.4
Conservative	51.2	51.9	54.3	50.2	50.3	54.3	48.4	51.5
Green	34.0	33.2	31.5	31.2	32.8	35.2	30.1	32.2
Bloc	25.4	26.1	27.3	26.5	28.5	28.8	22.9	26.5
Party Consider								
Liberal	52.7%	50.9%	51.4%	57.4%	49.5%	59.7%	49.1%	54.3%
NDP	45.1%	44.3%	41.6%	46.8%	40.4%	47.1%	40.4%	43.8%
Conservative	41.1%	42.8%	43.4%	41.7%	39.4%	44.7%	36.1%	41.5%
Bloc	30.6%	30.1%	32.2%	29.3%	33.9%	36.7%	25.3%	30.7%
Green	30.4%	27.3%	23.4%	27.3%	26.7%	33.1%	23.4%	27.5%
Preferred Prime Minister								
Harper	30.5%	31.1%	33.7%	30.2%	29.8%	34.1%	25.5%	30.4%
Trudeau	30.2%	29.0%	30.4%	31.0%	26.5%	35.8%	26.3%	30.8%
Mulcair	19.3%	18.3%	16.0%	18.1%	20.2%	20.4%	13.7%	17.8%
May	4.3%	4.4%	4.2%	4.7%	6.0%	6.7%	3.0%	4.7%
Beaulieu	1.2%	1.6%	1.8%	1.3%	2.5%	2.8%	0.5%	1.4%
Unsure	14.5%	15.6%	13.8%	14.6%	15.0%	18.1%	11.7%	14.6%

About the Index



Weekly Nanos Party Power Index

Since voters are not actually able to make a choice between elections, it is interesting to think about party strength and support more broadly. The Nanos Party Power Index fills this need by incorporating more information than just current vote preference.

The Nanos Party Power Index is a weekly composite measurement of federal party brands based on four questions about the federal parties and their leadership. The questions include:

- a ballot question that captures the 1st and 2nd vote preferences;
- a measure of whether the respondent would consider voting for the party;
- the 1st and 2nd preferences for Prime Minister of the current federal leaders; and,
- whether the respondent believes each current leader has the quality to be a good leader.

The views of 1,000 respondents are compiled into a diffusion brand index for each party that goes from 0 to 100, where 0 means that the party has no brand strength and 100 means it has maximum brand strength. A score above 50 is an indication of brand strength for the party and its leader at this time.

The important factors in this weekly tracking include the direction of the brand strength or weakness and also the brand strength of one federal party relative to another.

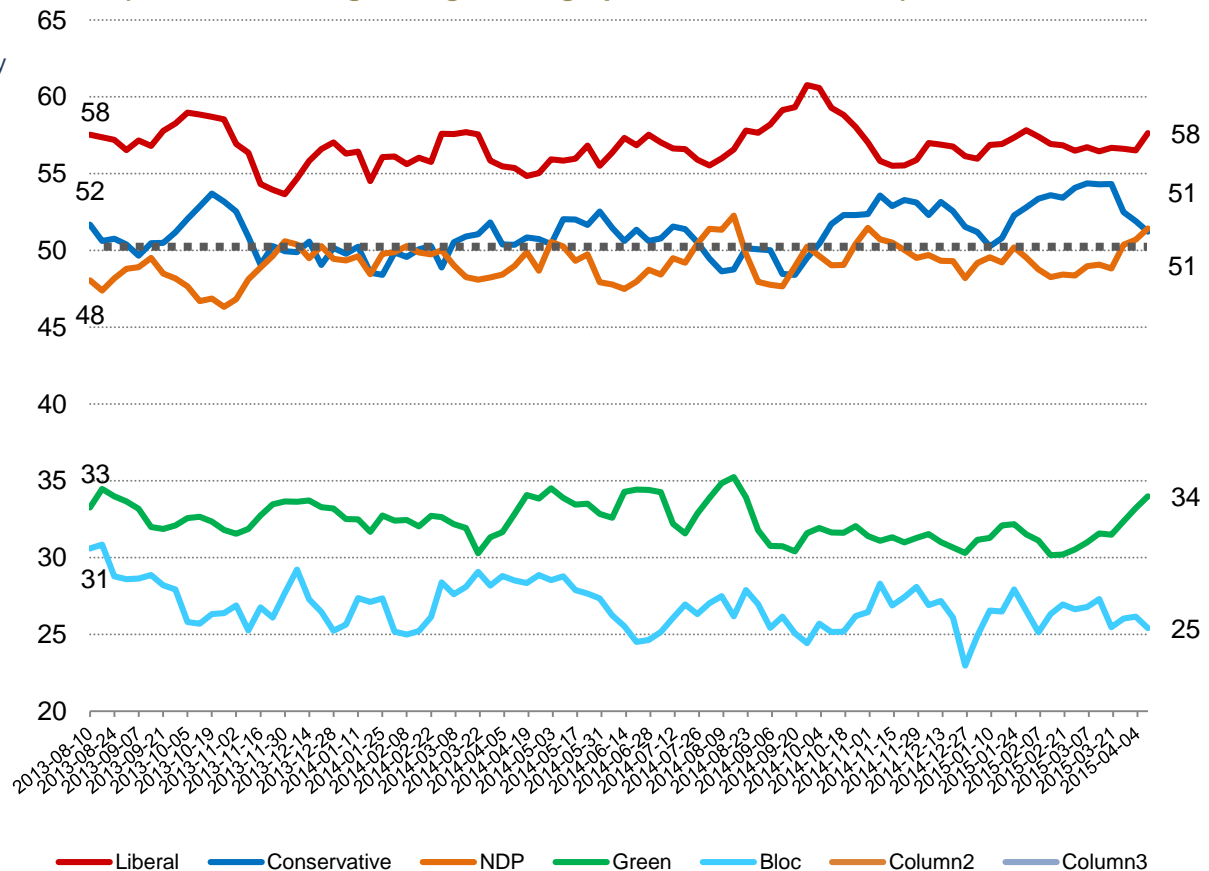
Party Power Index



The Nanos Party Power Index Tracking for Canada is based on a composite of the following public opinion measures: the national ballot, which party individuals would consider voting for, the top two choices for Prime Minister, and whether each party leader has good leadership qualities.

Contact: Nik Nanos
 Ottawa: (613) 234-4666 x 237
 Washington DC: (202) 697-9924
nnanos@nanosresearch.com

Canada Weekly Index Tracking Scores
 (Four week rolling average ending April 10th, 2015, n=1,000)



Party Power Index Tracking by Region

Nanos Weekly Tracking



NANOS

*Expert Counsel to CEOs
and thought leaders*

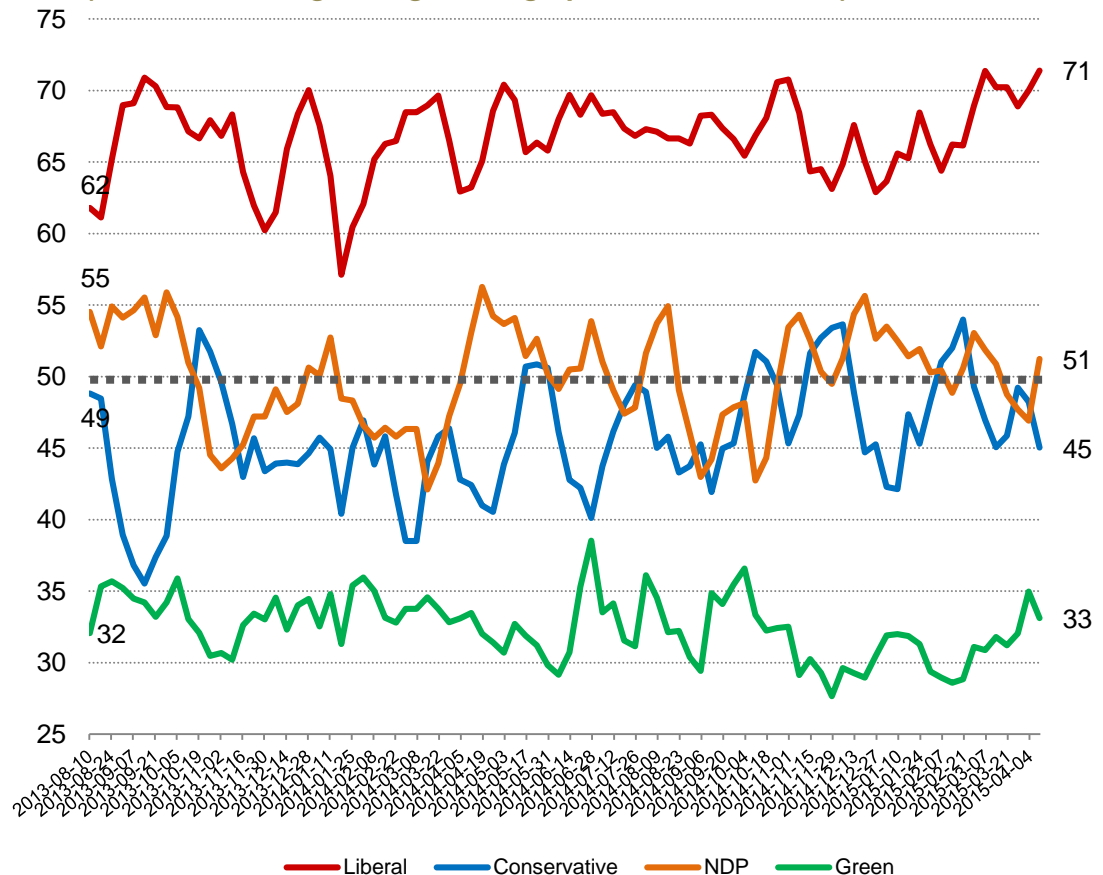
Party Power Index



The Nanos Party Power Index Tracking for the Atlantic is based on a composite of the following public opinion measures: the national ballot, which party individuals would consider voting for, the top two choices for Prime Minister, and whether each party leader has good leadership qualities. There are wider margins of accuracy for regional subsamples.

Contact: Nik Nanos
Ottawa: (613) 234-4666 x 237
Washington DC: (202) 697-9924
nnanos@nanosresearch.com

Atlantic Weekly Index Tracking Scores (Four week rolling average ending April 10th, 2015, n=100)



Party Power Index



The Nanos Party Power Index Tracking for Quebec is based on a composite of the following public opinion measures: the national ballot, which party individuals would consider voting for, the top two choices for Prime Minister, and whether each party leader has good leadership qualities. There are wider margins of accuracy for regional subsamples.

Contact: Nik Nanos

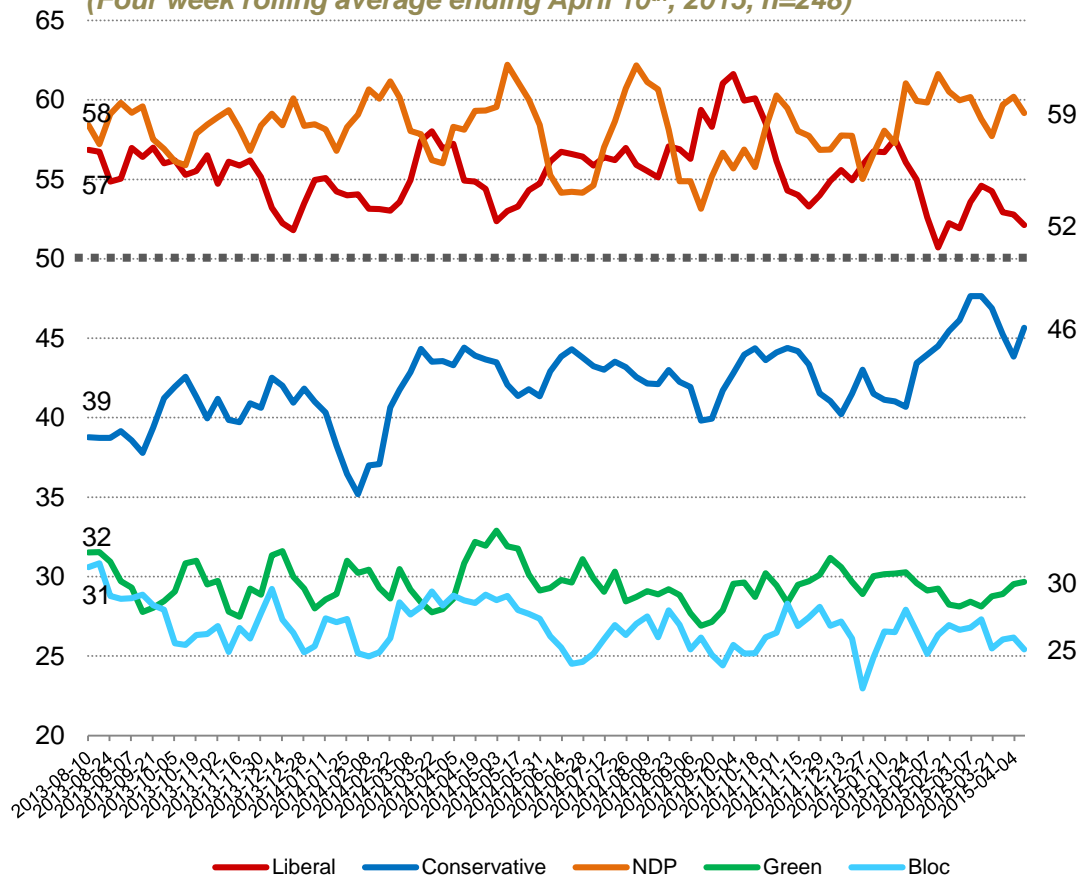
Ottawa: (613) 234-4666 x 237

Washington DC: (202) 697-9924

nnanos@nanosresearch.com

Quebec Weekly Index Tracking Scores

(Four week rolling average ending April 10th, 2015, n=248)



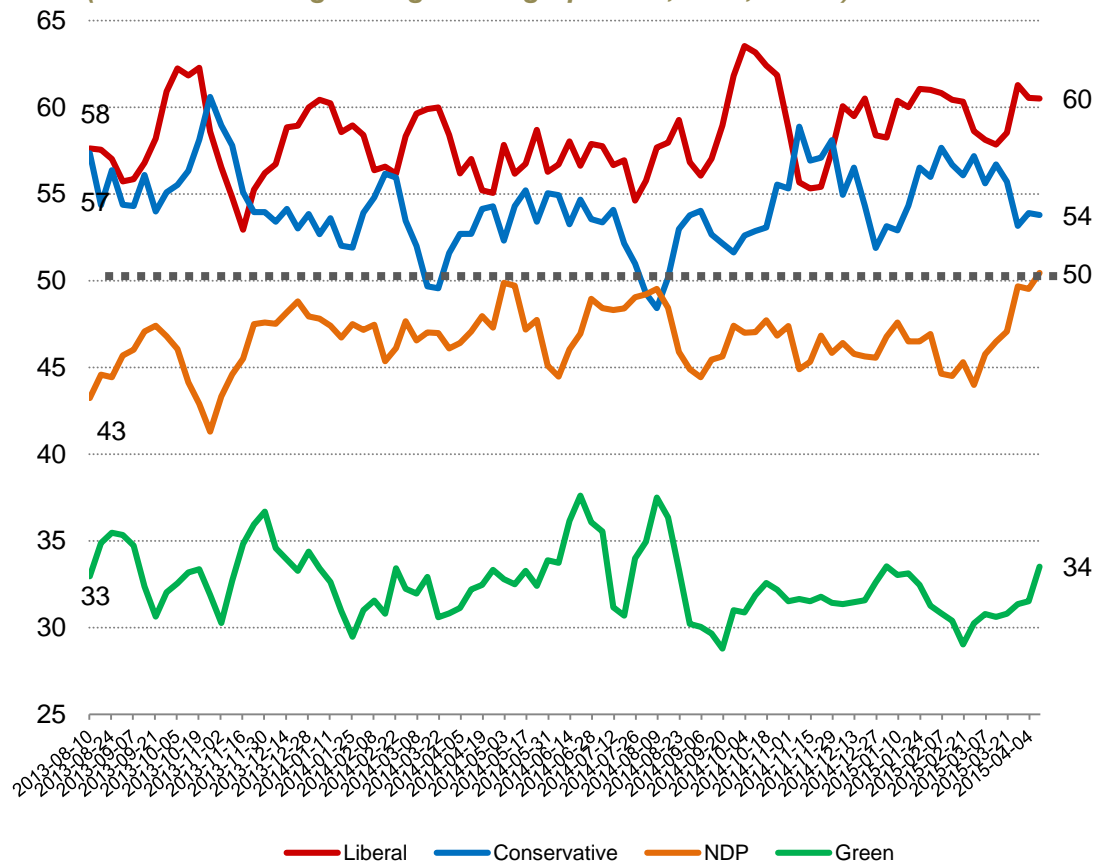
Party Power Index



The Nanos Party Power Index Tracking for Ontario is based on a composite of the following public opinion measures: the national ballot, which party individuals would consider voting for, the top two choices for Prime Minister, and whether each party leader has good leadership qualities. There are wider margins of accuracy for regional subsamples.

Contact: Nik Nanos
Ottawa: (613) 234-4666 x 237
Washington DC: (202) 697-9924
nnanos@nanosresearch.com

Ontario Weekly Index Tracking Scores
(Four week rolling average ending April 10th, 2015, n=300)



Party Power Index

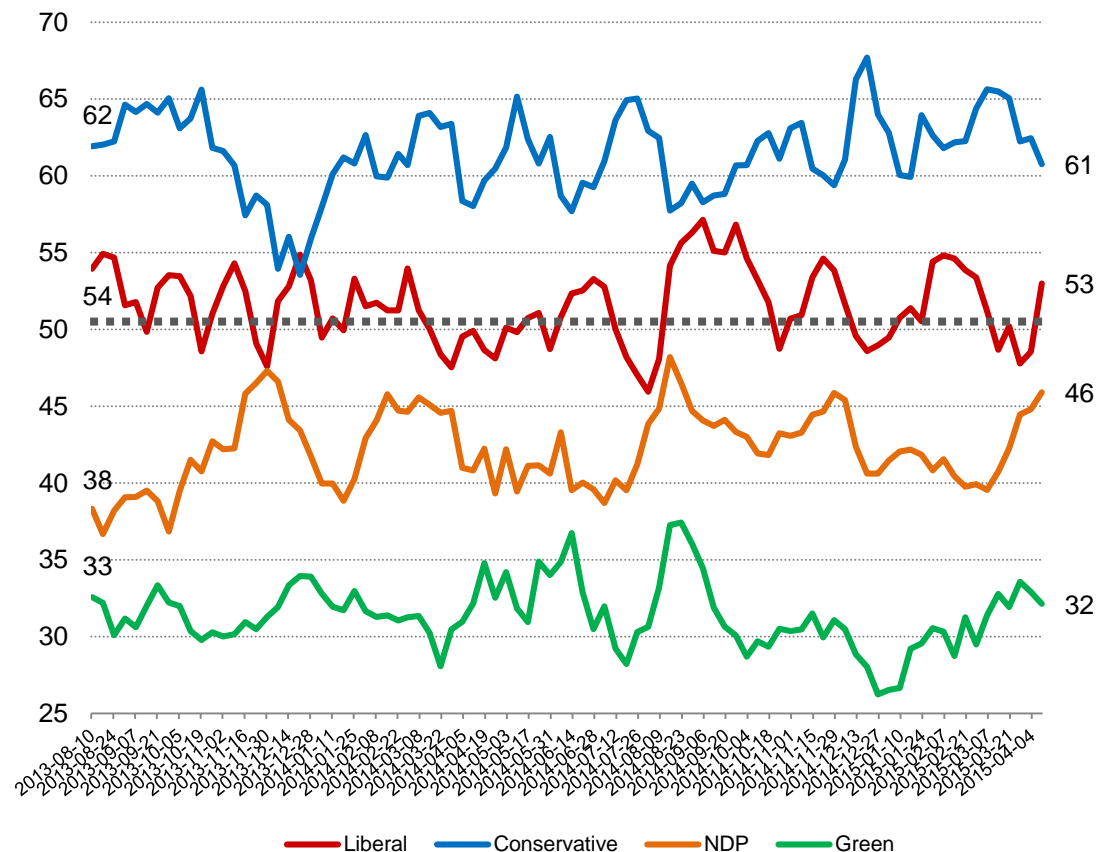


The Nanos Party Power Index Tracking for the Prairies is based on a composite of the following public opinion measures: the national ballot, which party individuals would consider voting for, the top two choices for Prime Minister, and whether each party leader has good leadership qualities. There are wider margins of accuracy for regional subsamples.

Contact: Nik Nanos
Ottawa: (613) 234-4666 x 237
Washington DC: (202) 697-9924
nnanos@nanosresearch.com

Prairies Weekly Index Tracking Scores

(Four week rolling average ending April 10th, 2015, n=200)



Party Power Index



The Nanos Party Power Index Tracking for BC is based on a composite of the following public opinion measures: the national ballot, which party individuals would consider voting for, the top two choices for Prime Minister, and whether each party leader has good leadership qualities. There are wider margins of accuracy for regional subsamples.

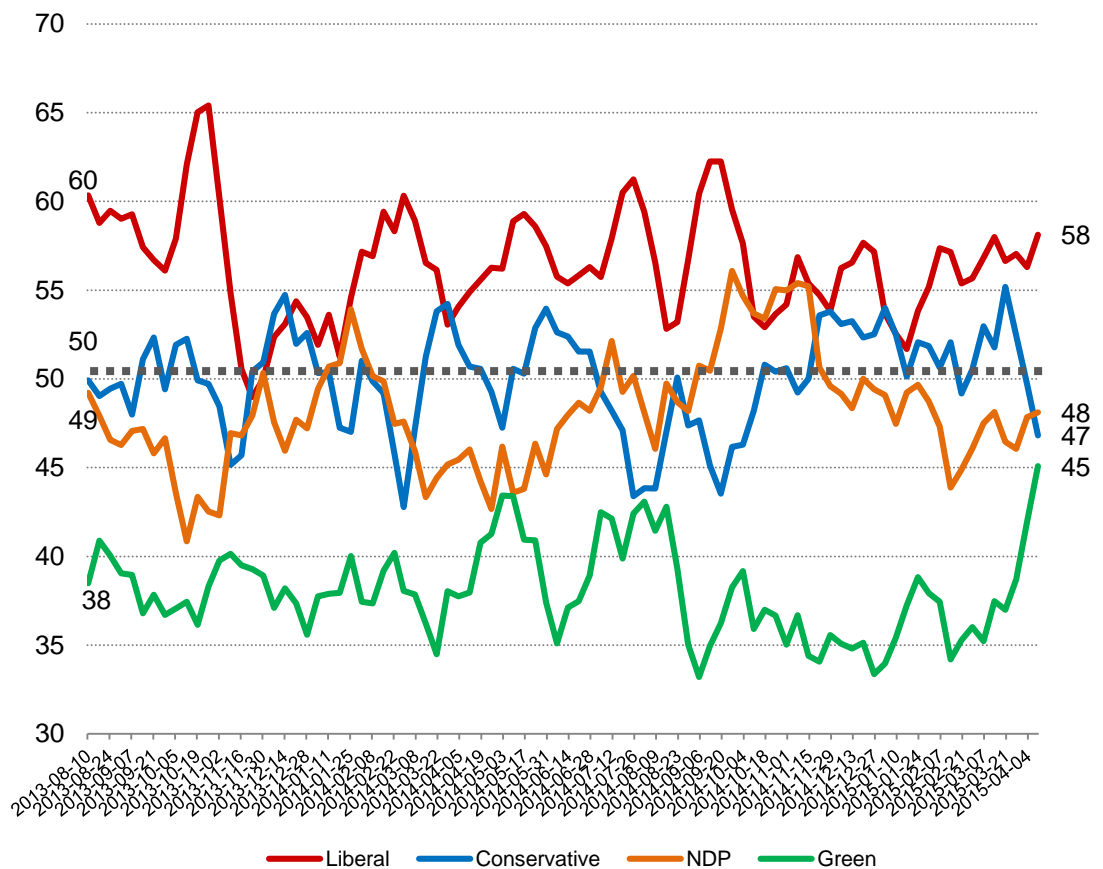
Contact: Nik Nanos

Ottawa: (613) 234-4666 x 237

Washington DC: (202) 697-9924

nnanos@nanosresearch.com

British Columbia Weekly Index Tracking Scores (Four week rolling average ending April 10th, 2015, n=152)



Party Power Index Tracking by Age

Nanos Weekly Tracking



NANOS

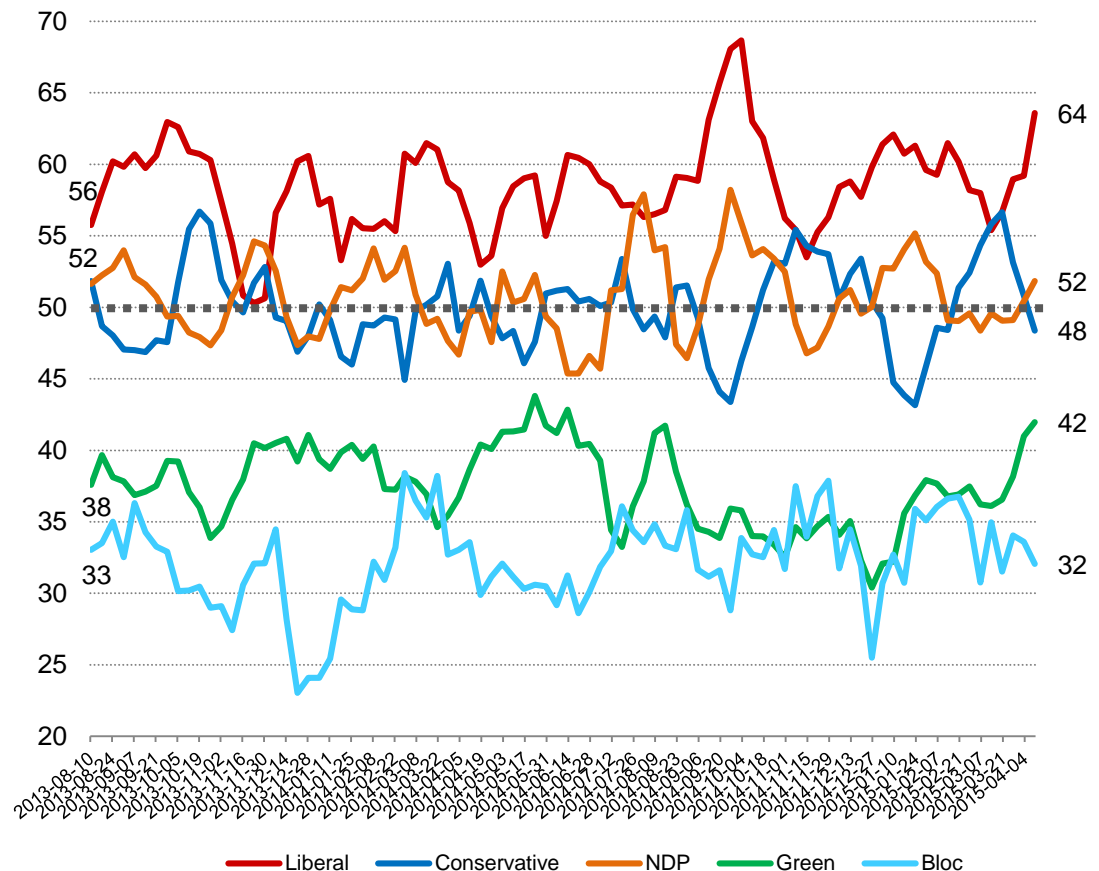
Party Power Index



The Nanos Party Power Index Tracking for the 18 to 29 age group is based on a composite of the following public opinion measures: the national ballot, which party individuals would consider voting for, the top two choices for Prime Minister, and whether each party leader has good leadership qualities. There are wider margins of accuracy for age subsamples.

Contact: Nik Nanos
Ottawa: (613) 234-4666 x 237
Washington DC: (202) 697-9924
nnanos@nanosresearch.com

18 to 29 Weekly Index Tracking Scores
(Four week rolling average ending April 10th, 2015, n=205)



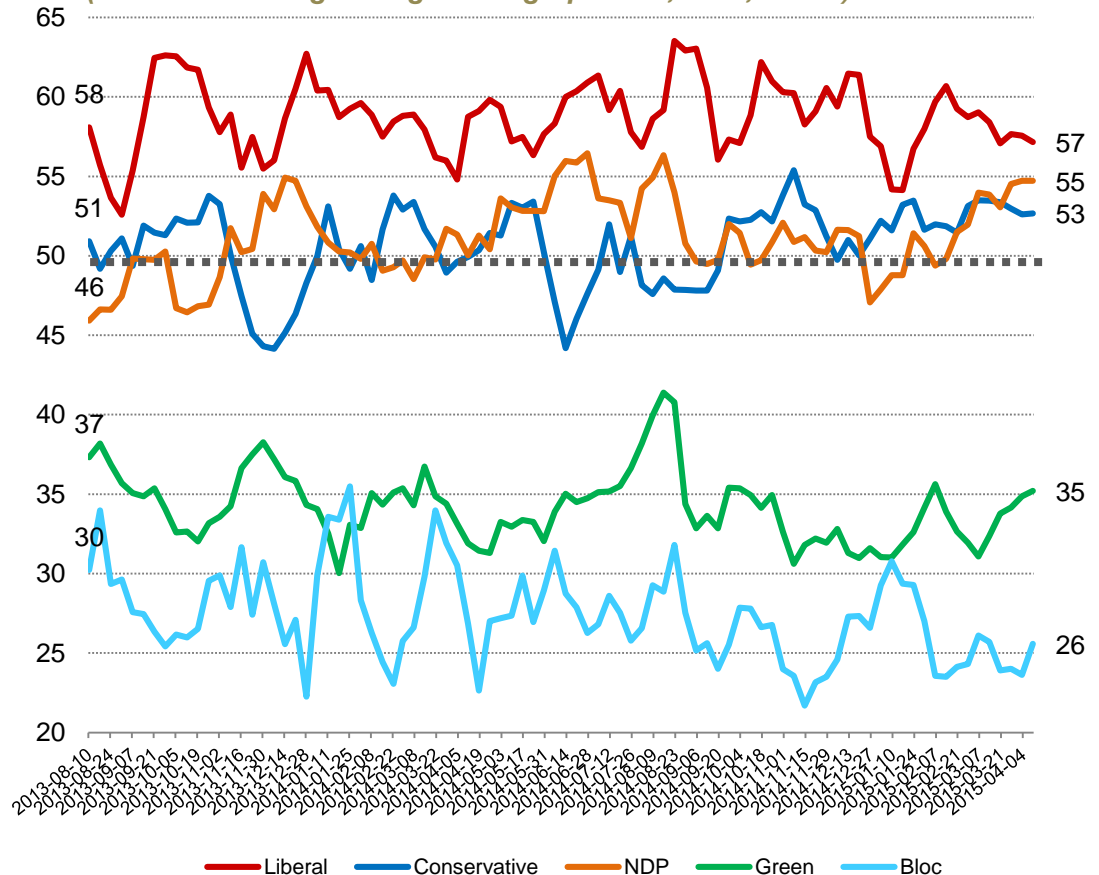
Party Power Index



The Nanos Party Power Index Tracking for the 30 to 39 age group is based on a composite of the following public opinion measures: the national ballot, which party individuals would consider voting for, the top two choices for Prime Minister, and whether each party leader has good leadership qualities. There are wider margins of accuracy for age subsamples.

Contact: Nik Nanos
Ottawa: (613) 234-4666 x 237
Washington DC: (202) 697-9924
nnanos@nanosresearch.com

30 to 39 Weekly Index Tracking Scores
(Four week rolling average ending April 10th, 2015, n=169)



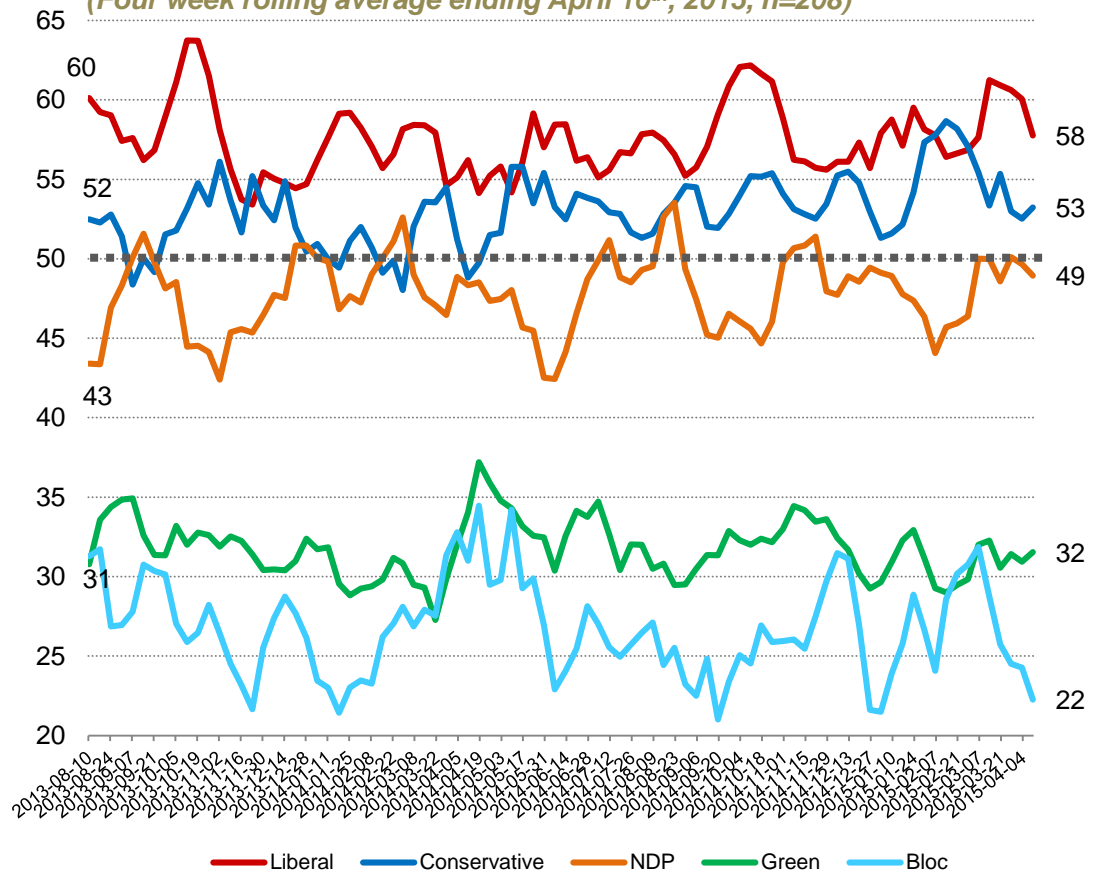
Party Power Index



The Nanos Party Power Index Tracking for the 40 to 49 age group is based on a composite of the following public opinion measures: the national ballot, which party individuals would consider voting for, the top two choices for PM, and whether each party leader has good leadership qualities. There are wider margins of accuracy for age subsamples.

Contact: Nik Nanos
Ottawa: (613) 234-4666 x 237
Washington DC: (202) 697-9924
nnanos@nanosresearch.com

40 to 49 Weekly Index Tracking Scores
(Four week rolling average ending April 10th, 2015, n=208)



Party Power Index



The Nanos Party Power Index Tracking for the 50 to 59 age group is based on a composite of the following public opinion measures: the national ballot, which party individuals would consider voting for, the top two choices for Prime Minister, and whether each party leader has good leadership qualities. There are wider margins of accuracy for age subsamples.

Contact: Nik Nanos

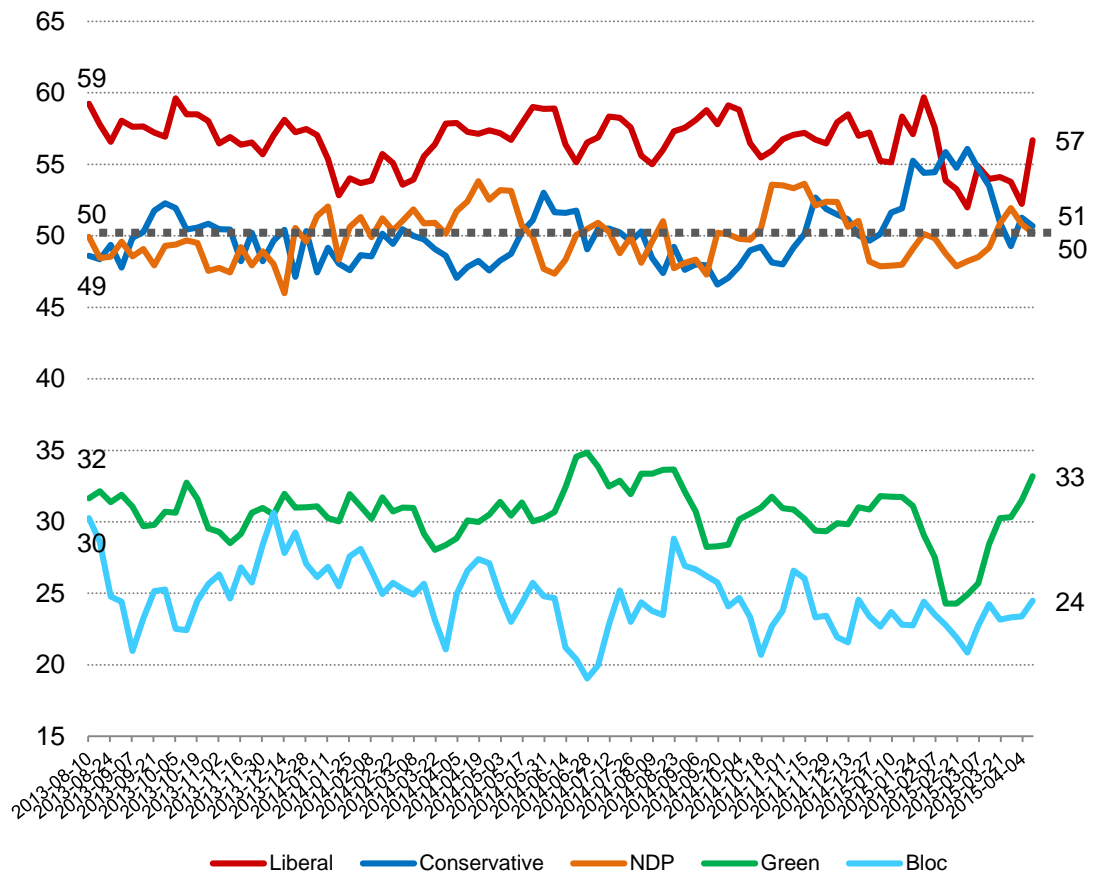
Ottawa: (613) 234-4666 x 237

Washington DC: (202) 697-9924

nnanos@nanosresearch.com

50 to 59 Weekly Index Tracking Scores

(Four week rolling average ending April 10th, 2015, n=178)



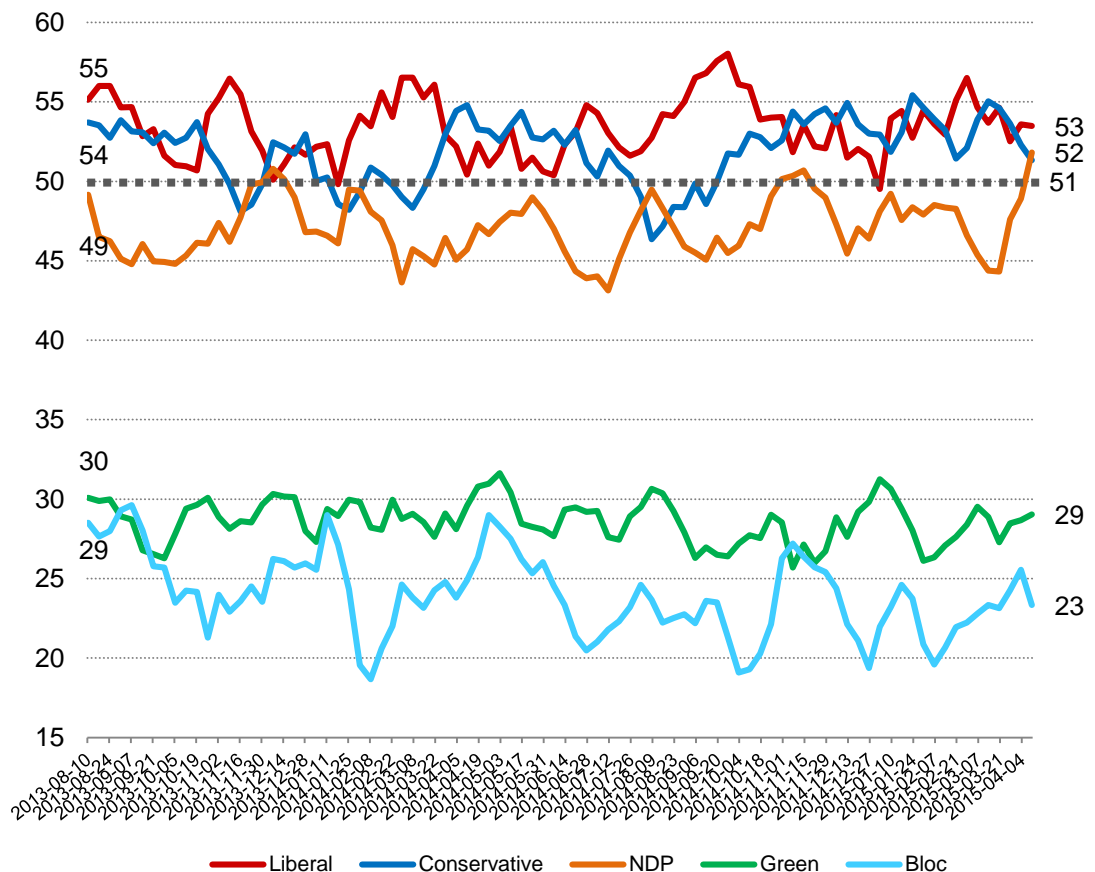
Party Power Index



The Nanos Party Power Index Tracking for the 60 plus age group is based on a composite of the following public opinion measures: the national ballot, which party individuals would consider voting for, the top two choices for Prime Minister, and whether each party leader has good leadership qualities. There are wider margins of accuracy for age subsamples.

Contact: Nik Nanos
Ottawa: (613) 234-4666 x 237
Washington DC: (202) 697-9924
nnanos@nanosresearch.com

60 plus Weekly Index Tracking Scores (Four week rolling average ending April 10th, 2015, n=239)



Party Power Index Tracking by Gender

Nanos Weekly Tracking



Party Power Index

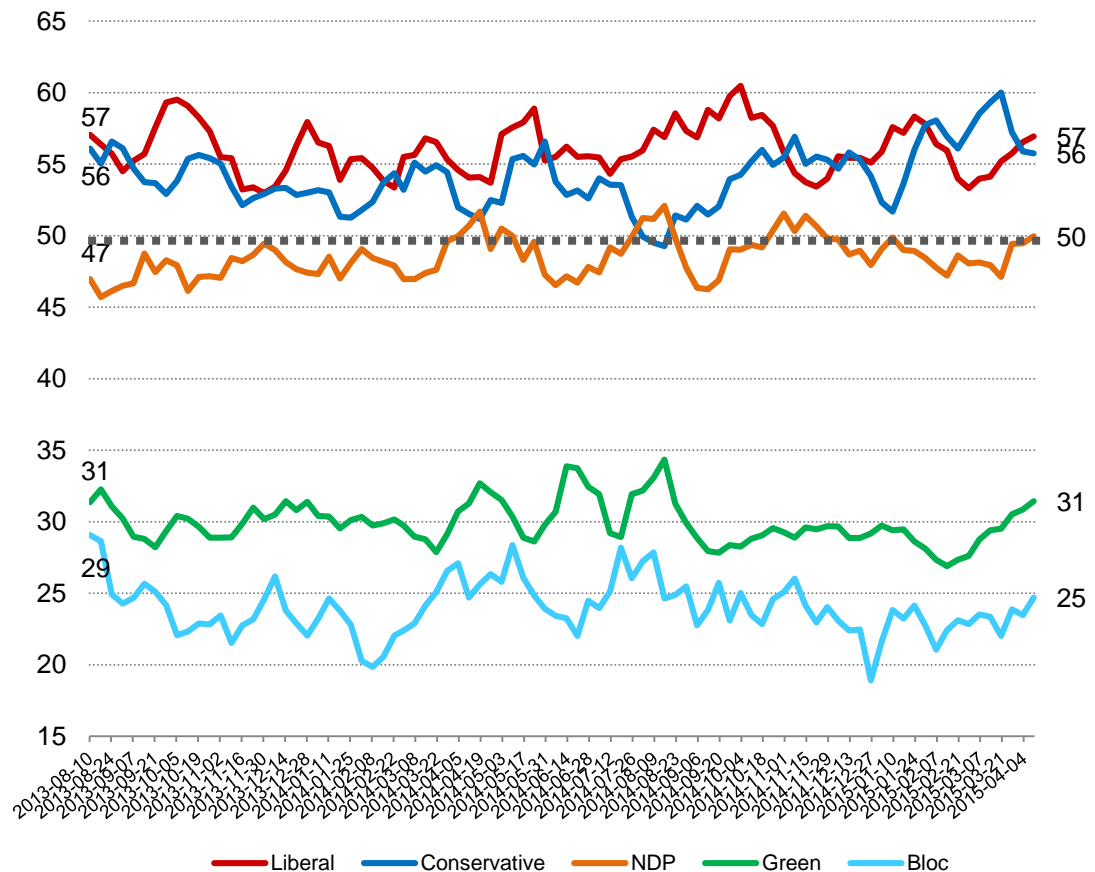


The Nanos Party Power Index Tracking for males is based on a composite of the following public opinion measures: the national ballot, which party individuals would consider voting for, the top two choices for Prime Minister, and whether each party leader has good leadership qualities. There are wider margins of accuracy for gender subsamples.

Contact: Nik Nanos
Ottawa: (613) 234-4666 x 237
Washington DC: (202) 697-9924
nnanos@nanosresearch.com

Male Weekly Index Tracking Scores

(Four week rolling average ending April 10th, 2015, n=498)



Party Power Index



The Nanos Party Power Index Tracking for females is based on a composite of the following public opinion measures: the national ballot, which party individuals would consider voting for, the top two choices for Prime Minister, and whether each party leader has good leadership qualities. There are wider margins of accuracy for gender subsamples.

Contact: Nik Nanos

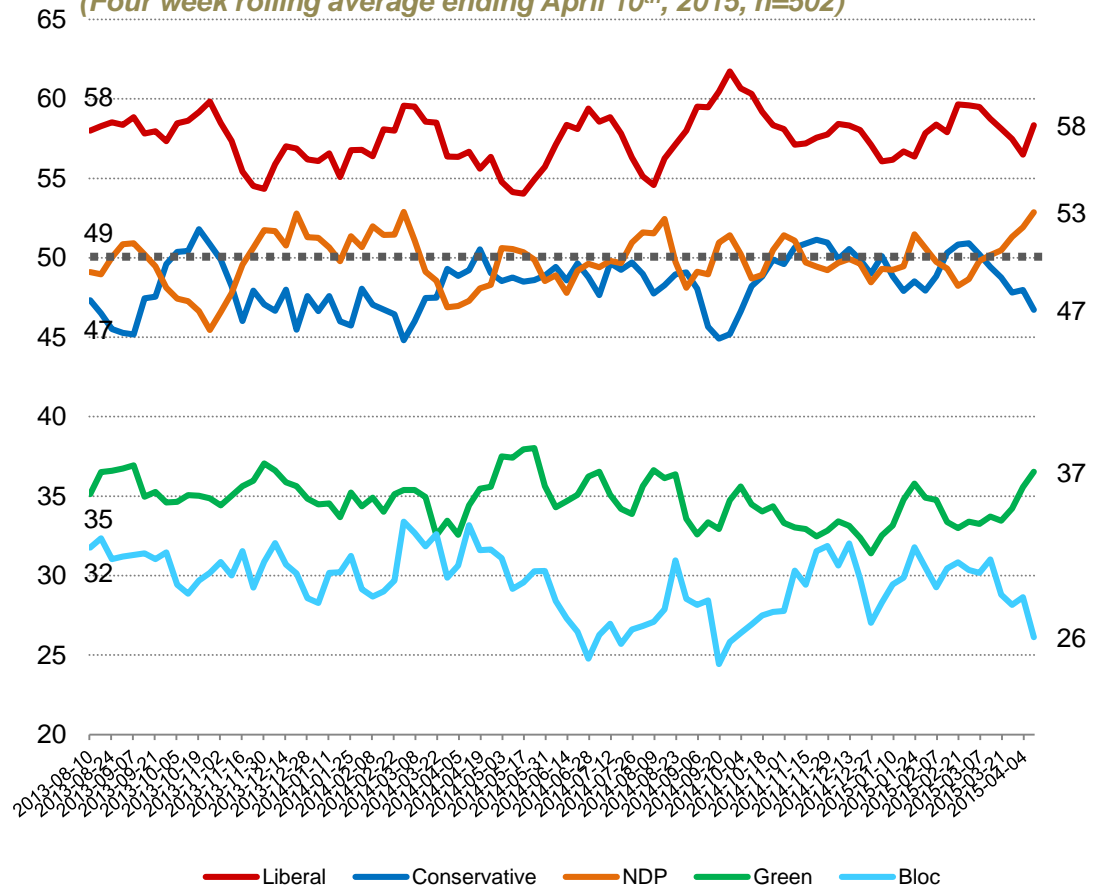
Ottawa: (613) 234-4666 x 237

Washington DC: (202) 697-9924

nnanos@nanosresearch.com

Female Weekly Index Tracking Scores

(Four week rolling average ending April 10th, 2015, n=502)



National Political Tracking Numbers

Nanos Weekly Tracking



NANOS

*A proven track
record of accuracy*

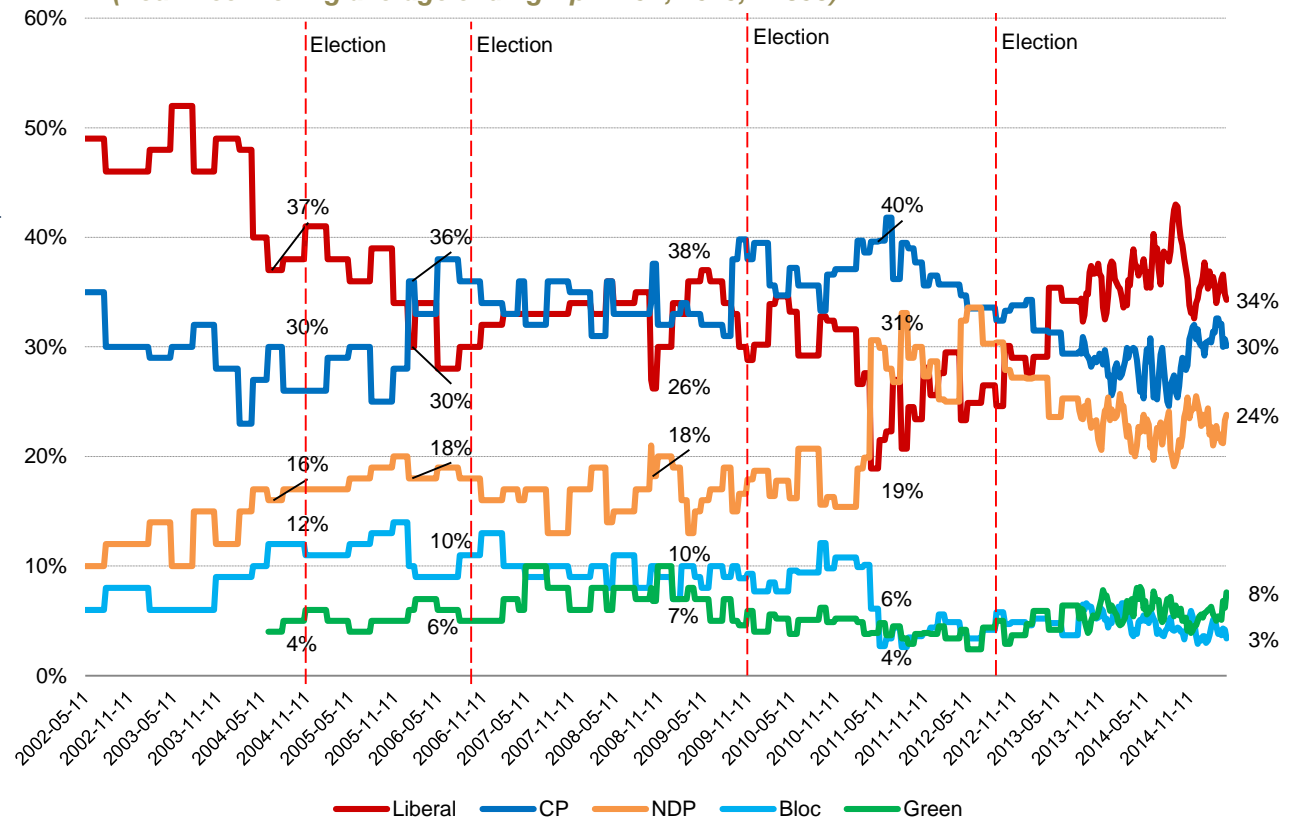
National Ballot



Question: For those parties you would consider voting for federally, could you please rank your top two current local preferences?

Contact: Nik Nanos
Ottawa: (613) 234-4666 x 237
Washington DC: (202) 697-9924
nnanos@nanosresearch.com

Weekly Tracking – First Ranked Choice
(Four week rolling average ending April 10th, 2015, n=853)



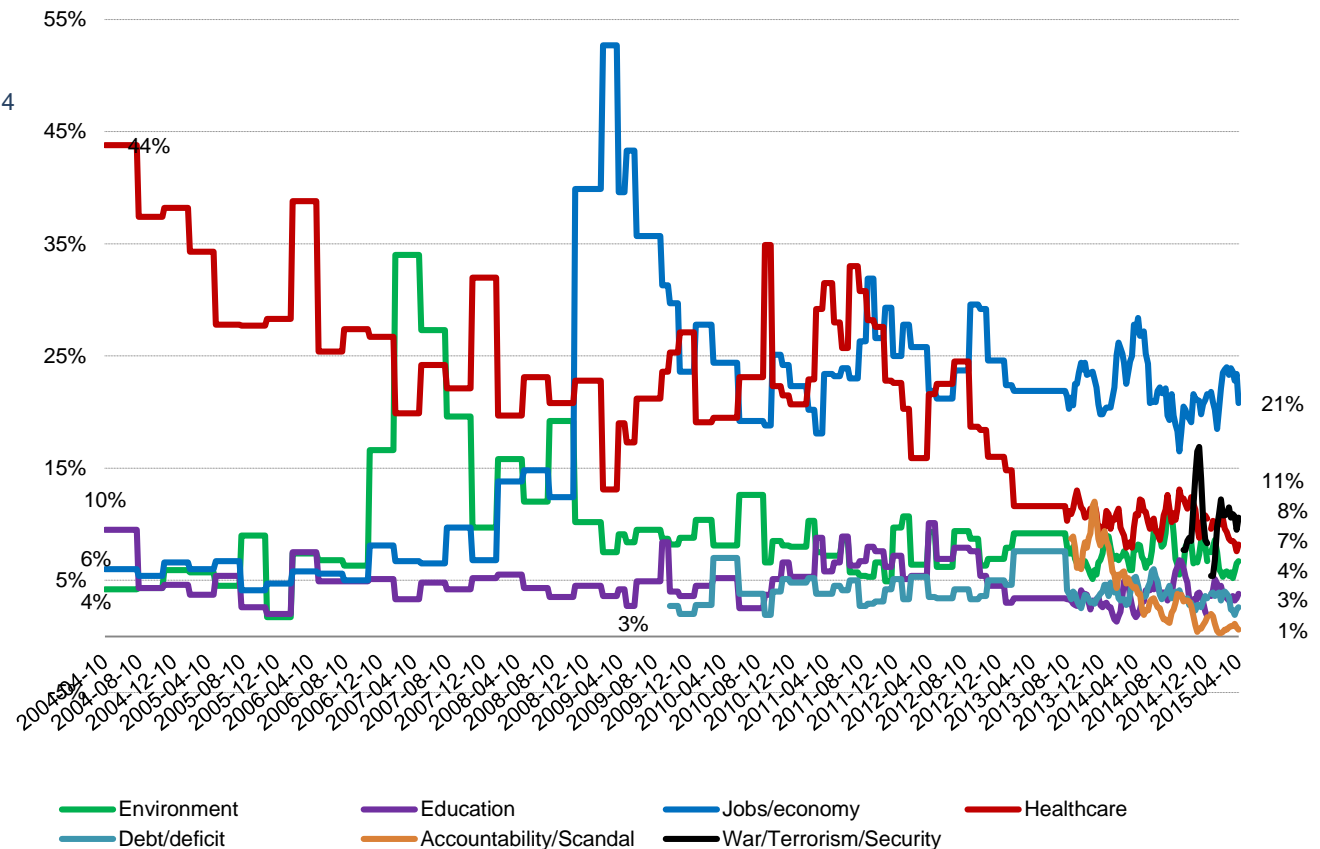
National Issue



Question: What is your most important NATIONAL issue of concern?

Contact: Nik Nanos
Ottawa: (613) 234-4666 x 237
Washington DC: (202) 697-9924
nnanos@nanosresearch.com

Weekly Tracking (Four week rolling average ending April 10th, 2015, n=1,000)



Federal Party Accessible Voters

Nanos Weekly Tracking



*A proven track
record of accuracy*

Consider Conservative

Question: For each of the following federal political parties, please tell me if you would consider or not consider voting for it.
[RANDOMIZE] Conservative Party

Contact: Nik Nanos

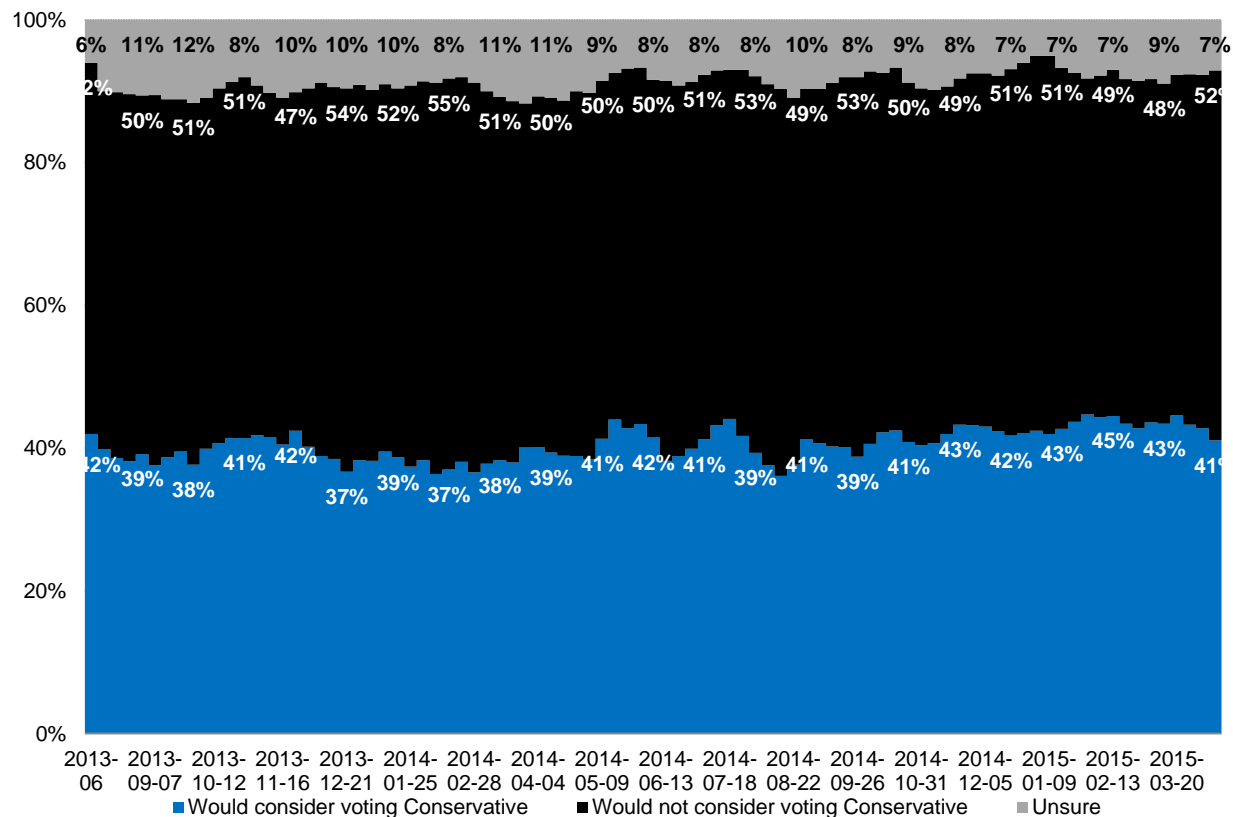
Ottawa: (613) 234-4666 x 237

Washington DC: (202) 697-9924

nnanos@nanosresearch.com

National – Weekly Tracking

(Four week rolling average ending April 10th, 2015, n=1,000)



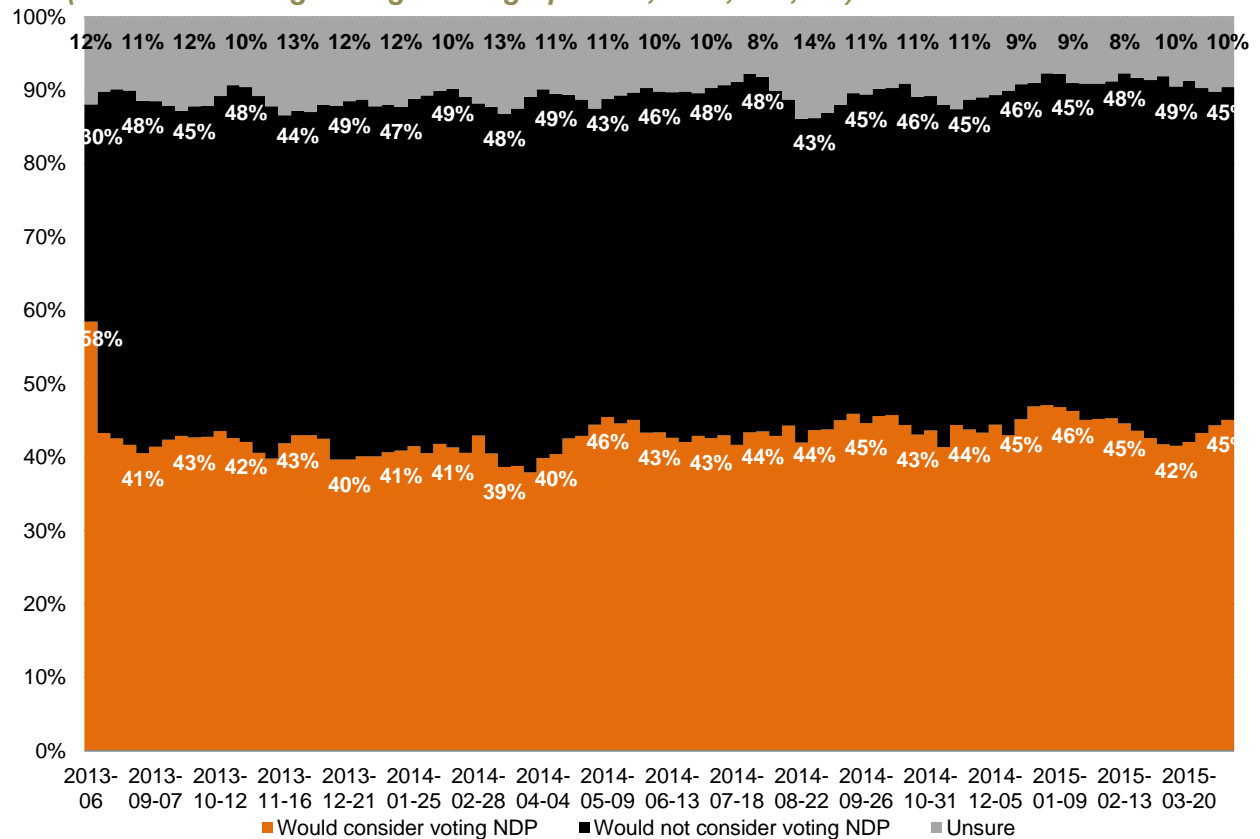
Consider NDP



Question: For each of the following federal political parties, please tell me if you would consider or not consider voting for it.
[RANDOMIZE] NDP

Contact: Nik Nanos
Ottawa: (613) 234-4666 x 237
Washington DC: (202) 697-9924
nnanos@nanosresearch.com

National – Weekly Tracking
(Four week rolling average ending April 10th, 2015, n=1,000)



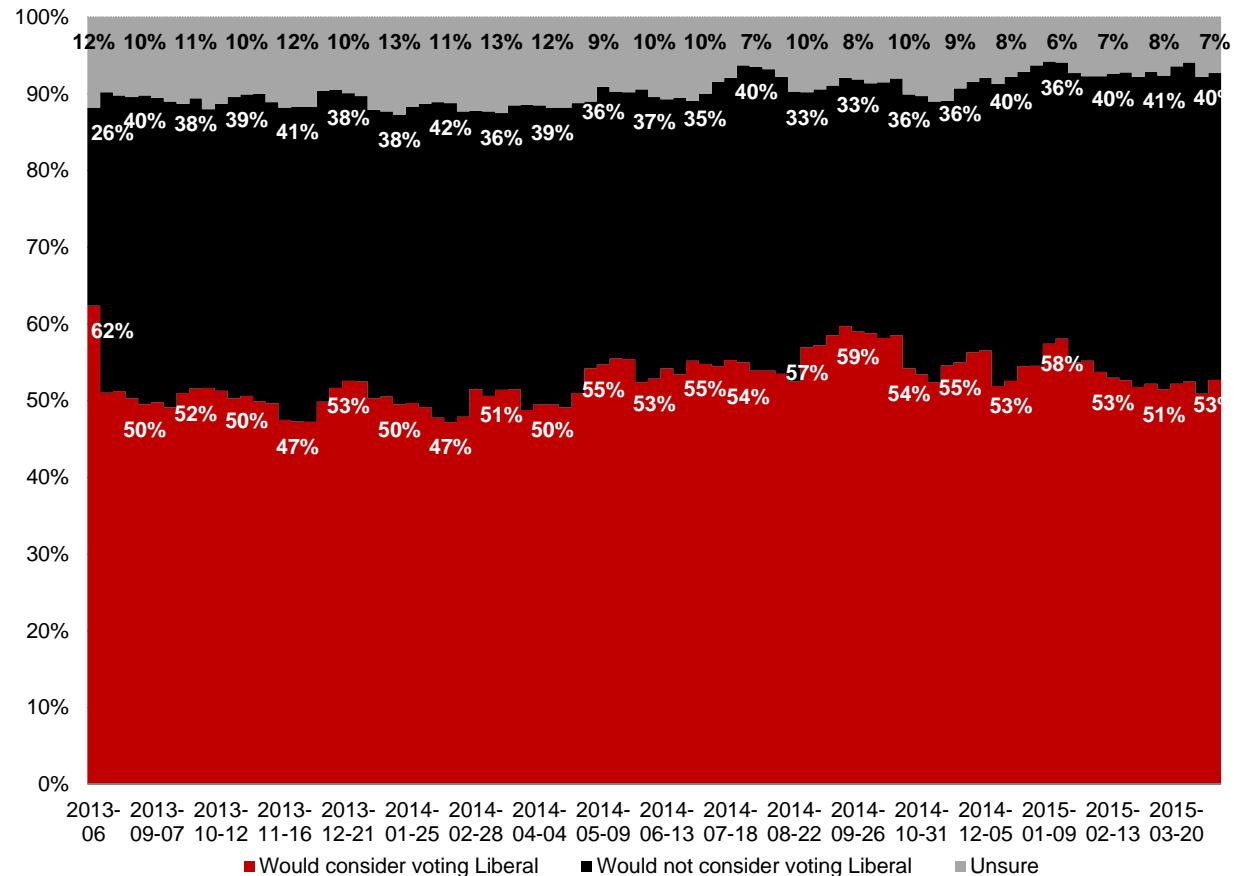
Consider Liberal



Question: For each of the following federal political parties, please tell me if you would consider or not consider voting for it.
[RANDOMIZE] Liberal Party

Contact: Nik Nanos
Ottawa: (613) 234-4666 x 237
Washington DC: (202) 697-9924
nnanos@nanosresearch.com

National – Weekly Tracking (Four week rolling average ending April 10th, 2015, n=1,000)



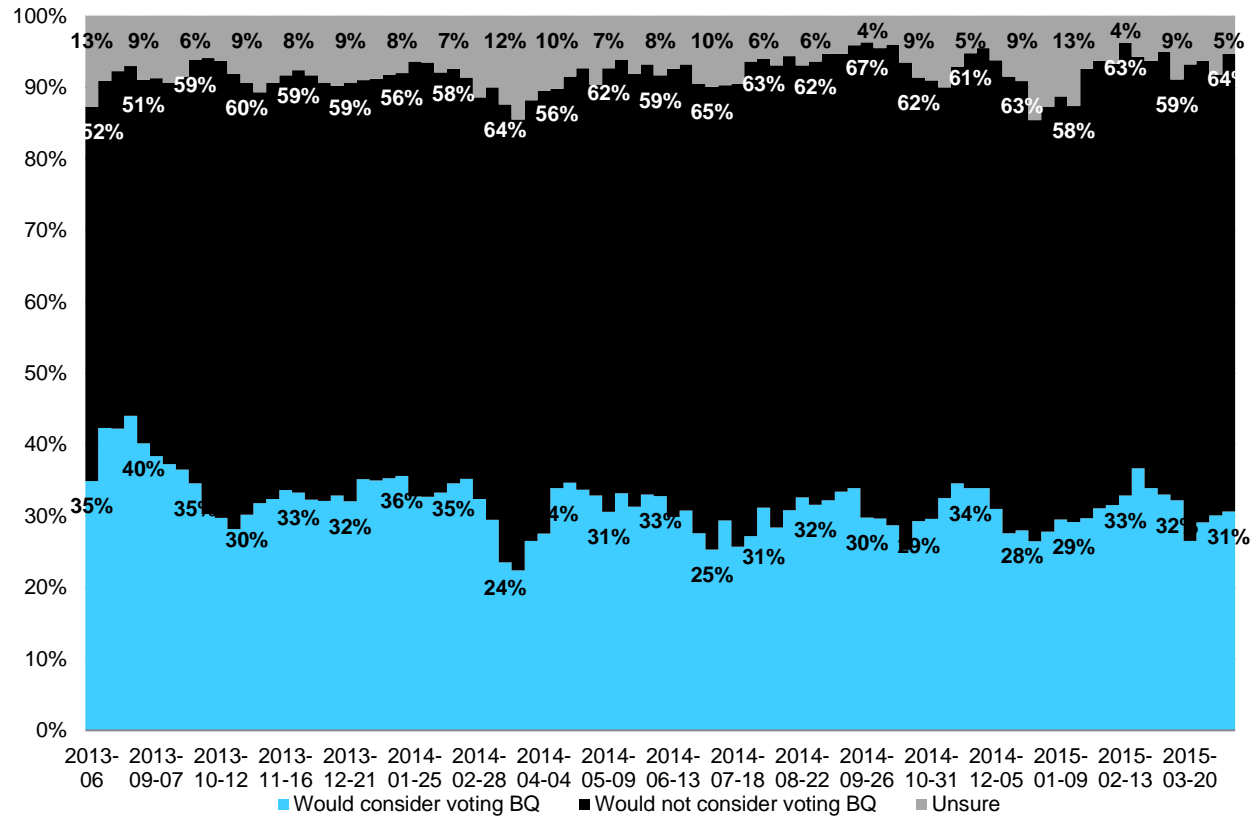
Consider Bloc



Question: For each of the following federal political parties, please tell me if you would consider or not consider voting for it. [RANDOMIZE] Bloc Québécois

Contact: Nik Nanos
Ottawa: (613) 234-4666 x 237
Washington DC: (202) 697-9924
nnanos@nanosresearch.com

Quebec only – Weekly Tracking
Four week rolling average ending April 10th, 2015, n=248)



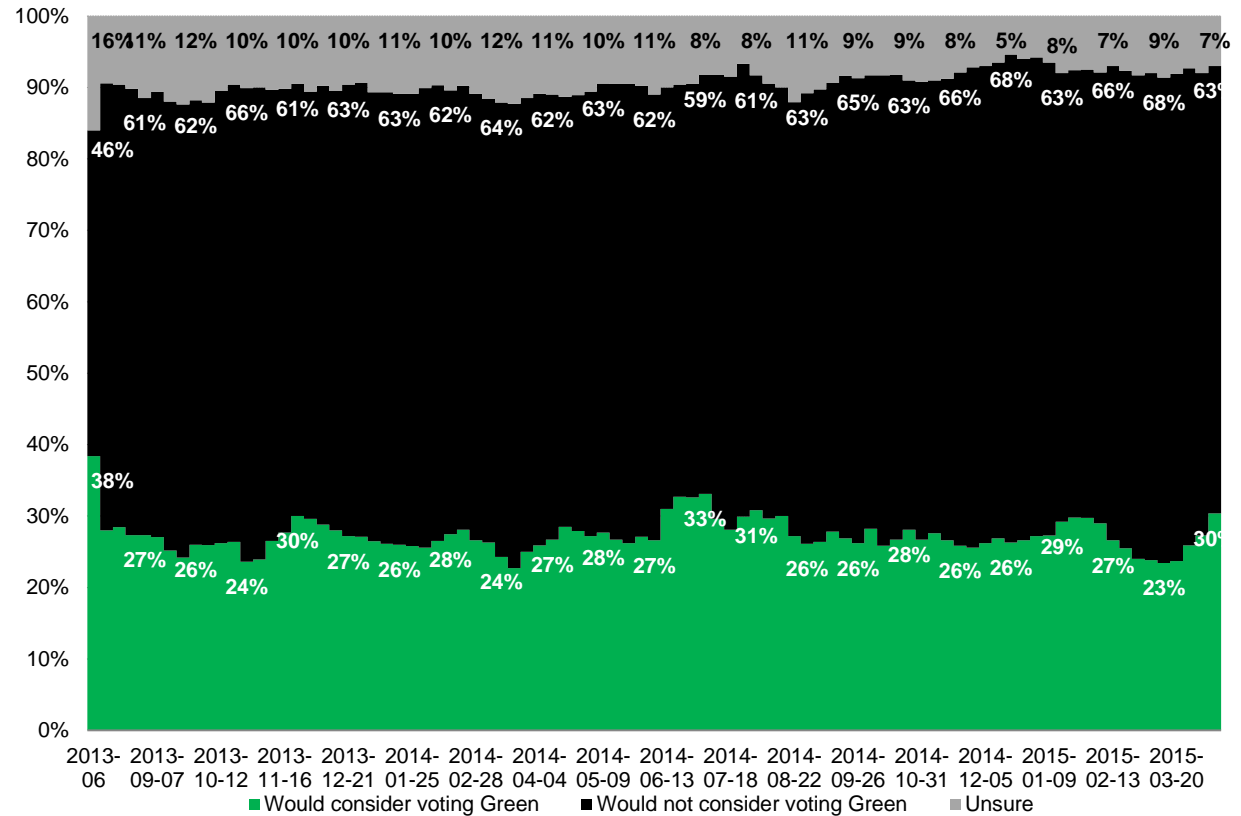
Consider Green



Question: For each of the following federal political parties, please tell me if you would consider or not consider voting for it.
[RANDOMIZE] Green Party

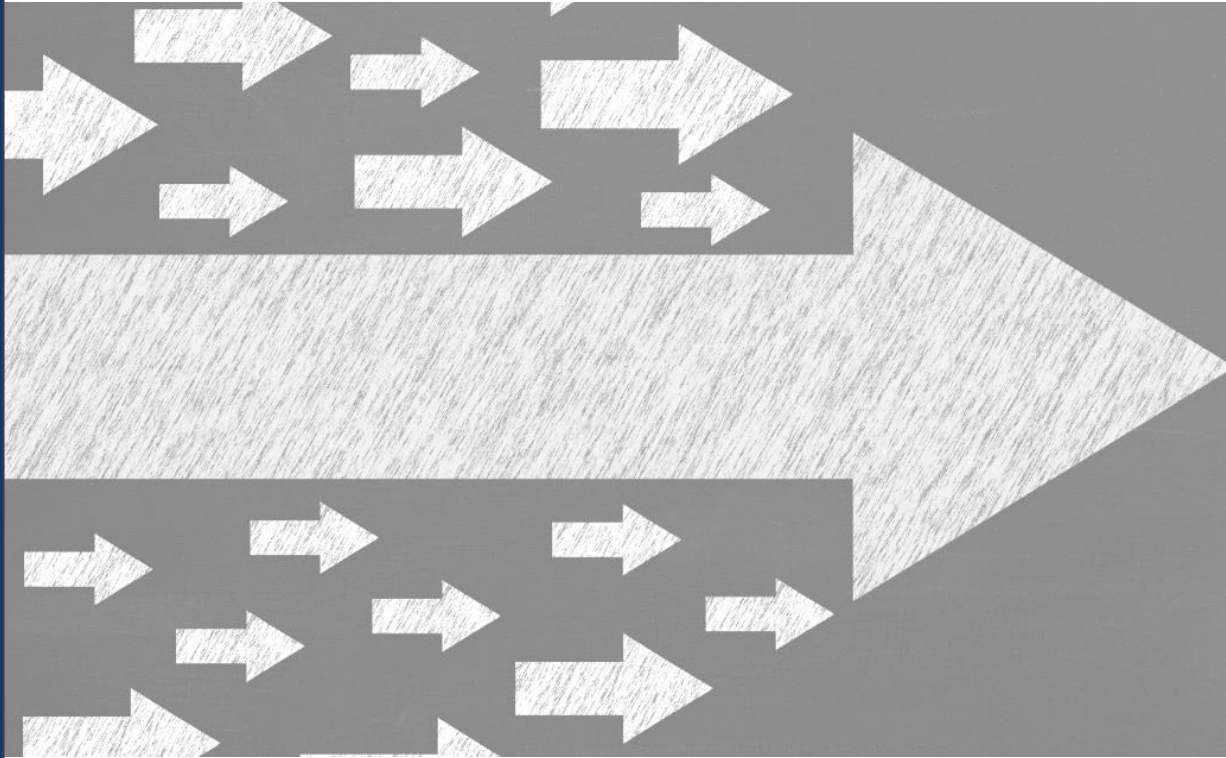
Contact: Nik Nanos
Ottawa: (613) 234-4666 x 237
Washington DC: (202) 697-9924
nnanos@nanosresearch.com

National – Weekly Tracking (Four week rolling average ending April 10th, 2015, n=1,000)



Tracking on the Federal Political Leaders

Nanos Weekly Tracking



NANOS

*Winning solutions
for decision-makers*

Prime Minister



Question: Of the current federal political party leaders, could you please rank your top two current local preferences for Prime Minister? [ROTATE PARTY LEADERS]

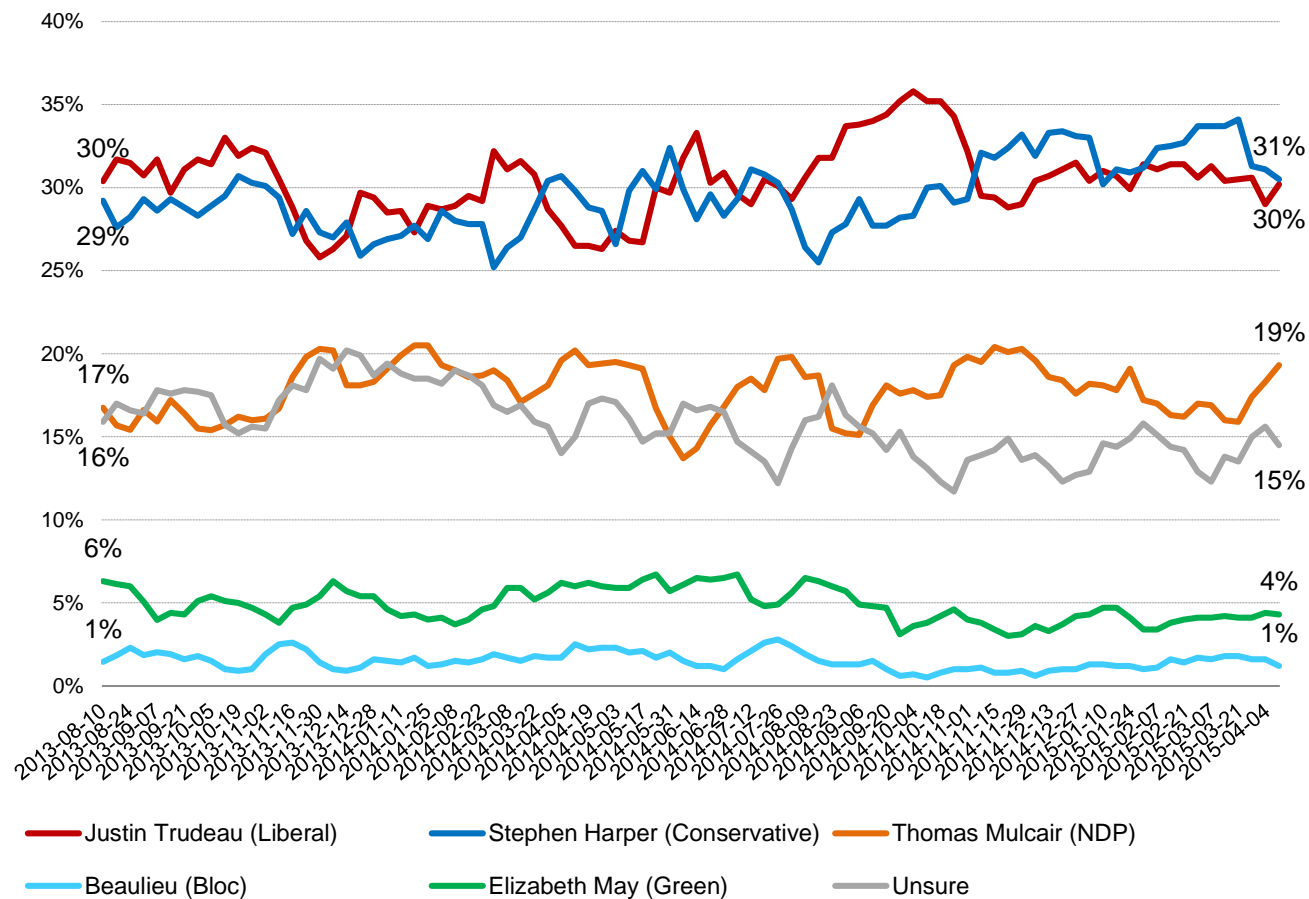
Contact: Nik Nanos

Ottawa: (613) 234-4666 x 237

Washington DC: (202) 697-9924

nnanos@nanosresearch.com

National – Weekly Tracking – First Ranked Choice (Four week rolling average ending April 10th, 2015, n=1,000)



Harper



Question: For each of the following federal political party leaders, do you think they have or do not have the qualities to be a good political leader? [RANDOMIZE] Stephen Harper

Contact: Nik Nanos

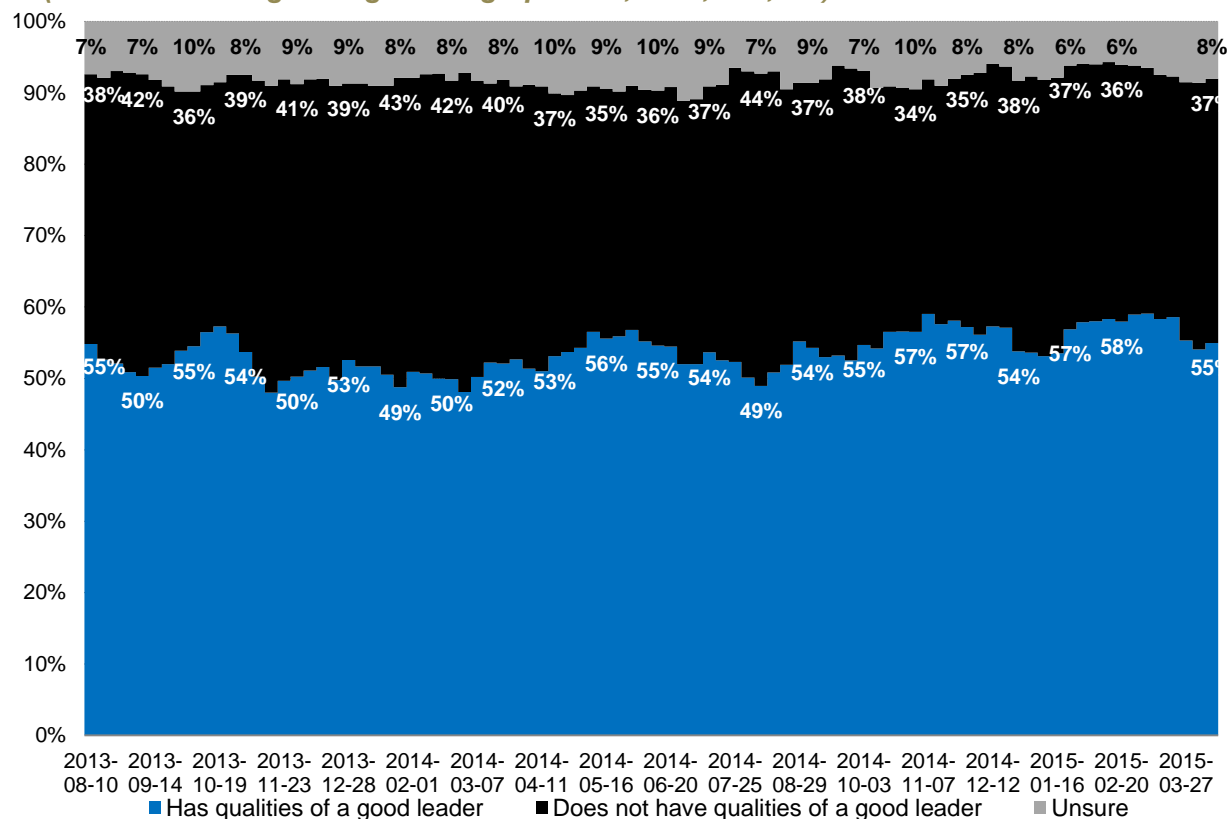
Ottawa: (613) 234-4666 x 237

Washington DC: (202) 697-9924

nnanos@nanosresearch.com

National – Weekly Tracking

(Four week rolling average ending April 10th, 2015, n=1,000)



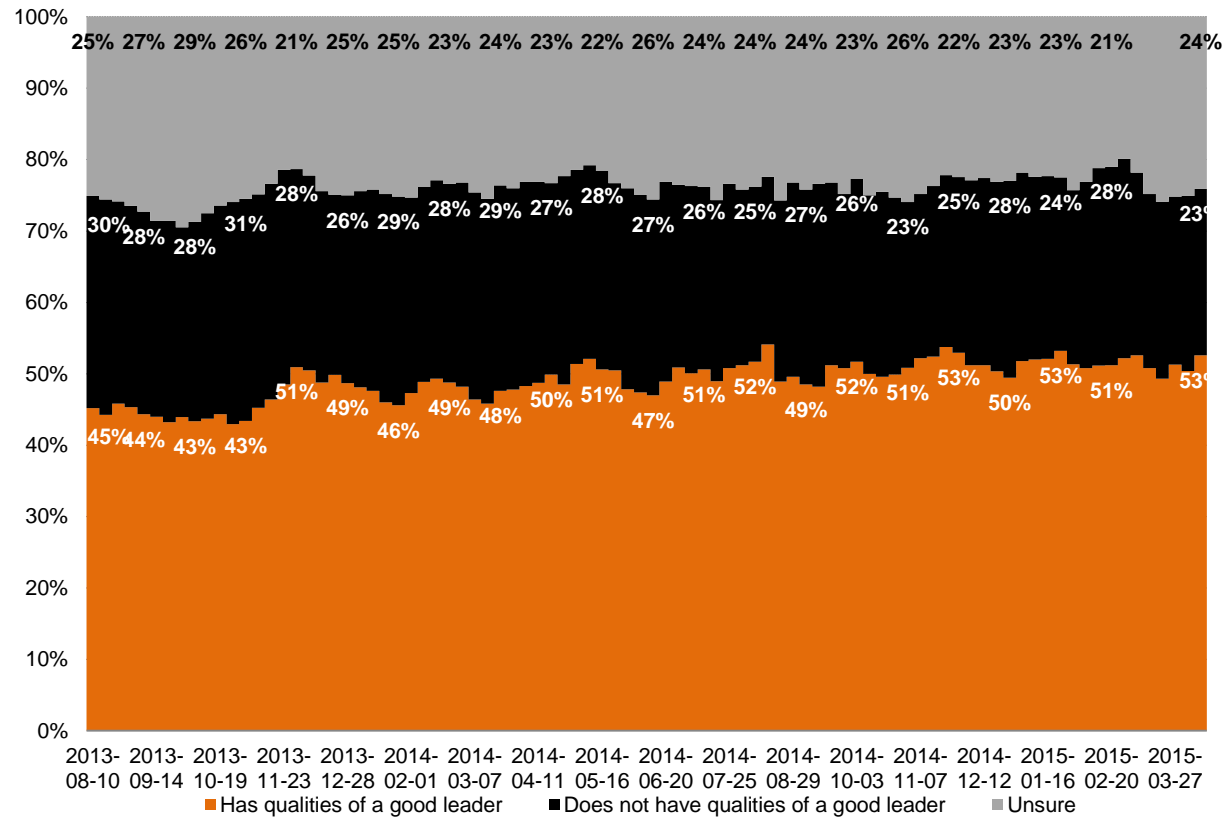
Mulcair



Question: For each of the following federal political party leaders, do you think they have or do not have the qualities to be a good political leader? [RANDOMIZE] Thomas Mulcair

Contact: Nik Nanos
Ottawa: (613) 234-4666 x 237
Washington DC: (202) 697-9924
nnanos@nanosresearch.com

National – Weekly Tracking (Four week rolling average ending April 10th, 2015, n=1,000)



Trudeau



Question: For each of the following federal political party leaders, do you think they have or do not have the qualities to be a good political leader? [RANDOMIZE] Justin Trudeau

Contact: Nik Nanos

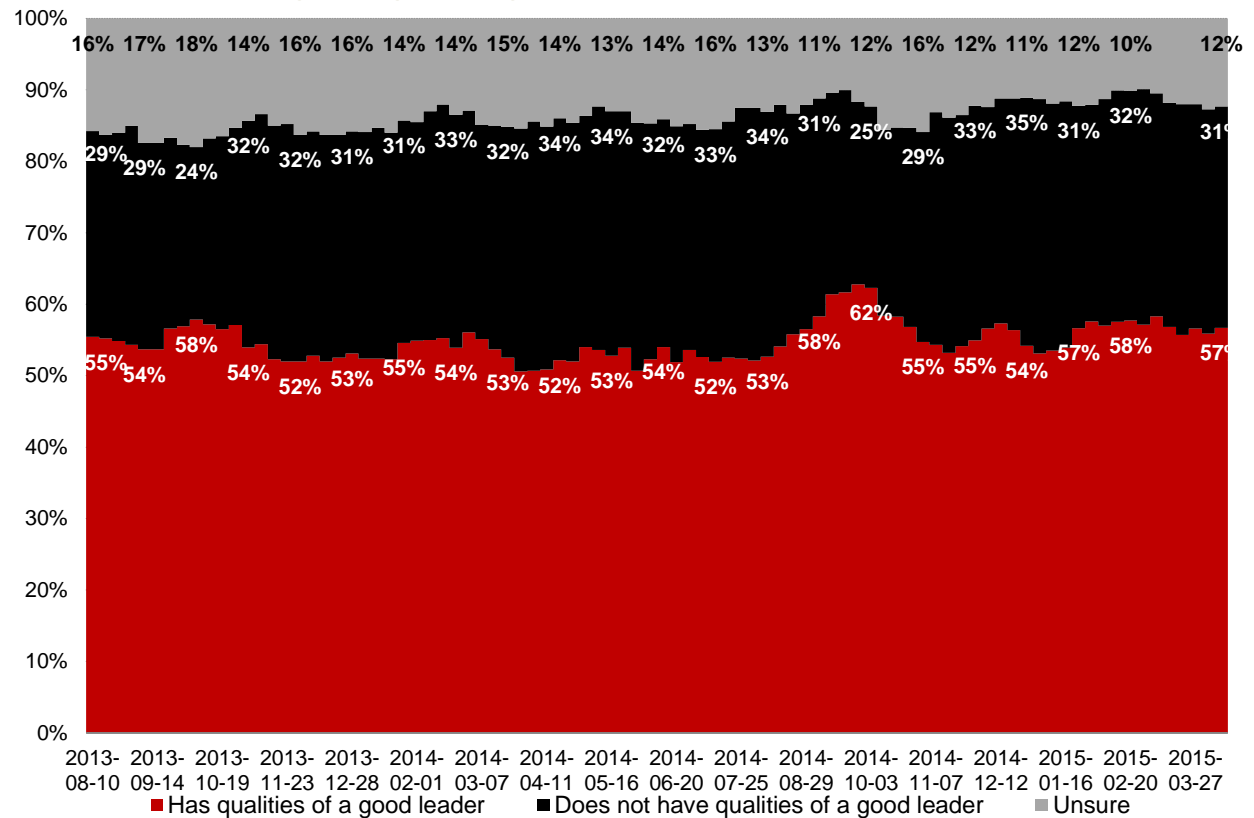
Ottawa: (613) 234-4666 x 237

Washington DC: (202) 697-9924

nnanos@nanosresearch.com

National – Weekly Tracking

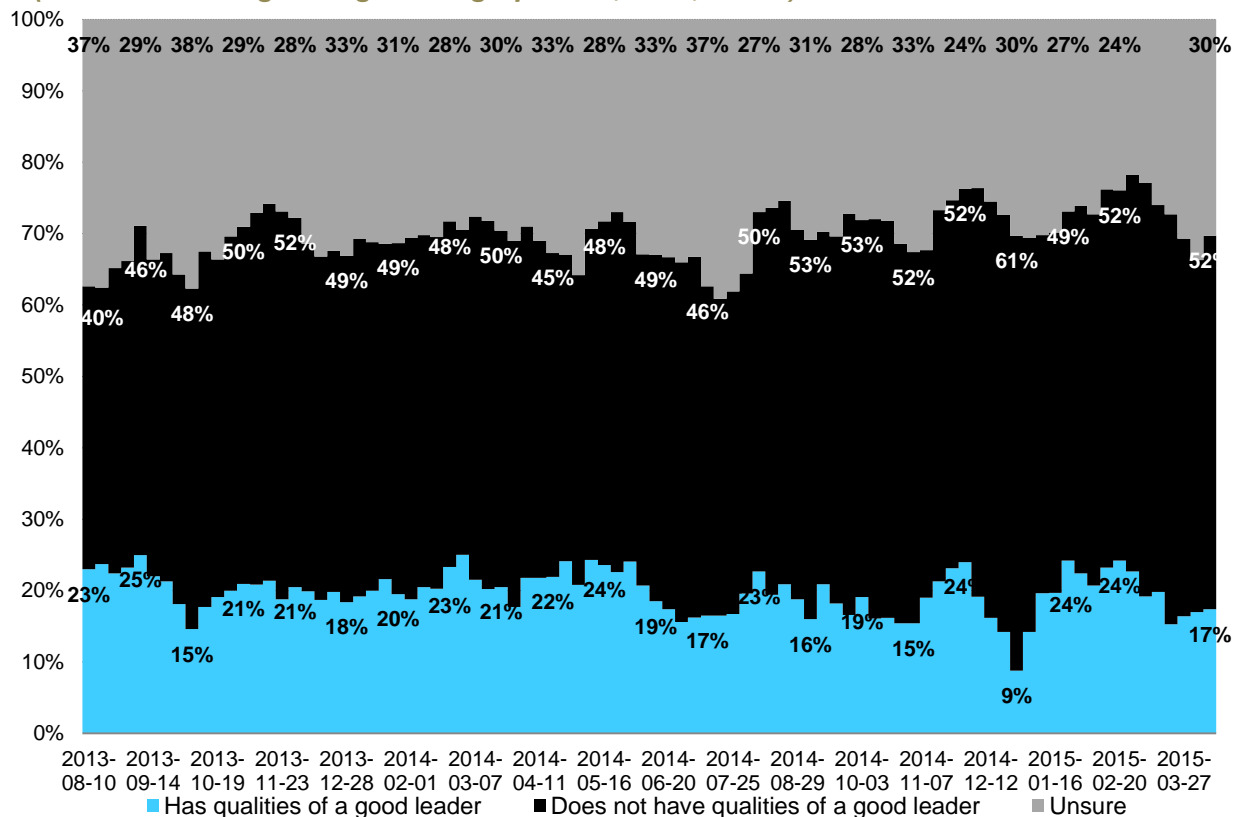
(Four week rolling average ending April 10th, 2015, n=1,000)



Question: For each of the following federal political party leaders, do you think they have or do not have the qualities to be a good political leader? [RANDOMIZE] Mario Beaulieu

Contact: Nik Nanos
Ottawa: (613) 234-4666 x 237
Washington DC: (202) 697-9924
nnanos@nanosresearch.com

Quebec only – Weekly Tracking (Four week rolling average ending April 10th, 2015, n=248)



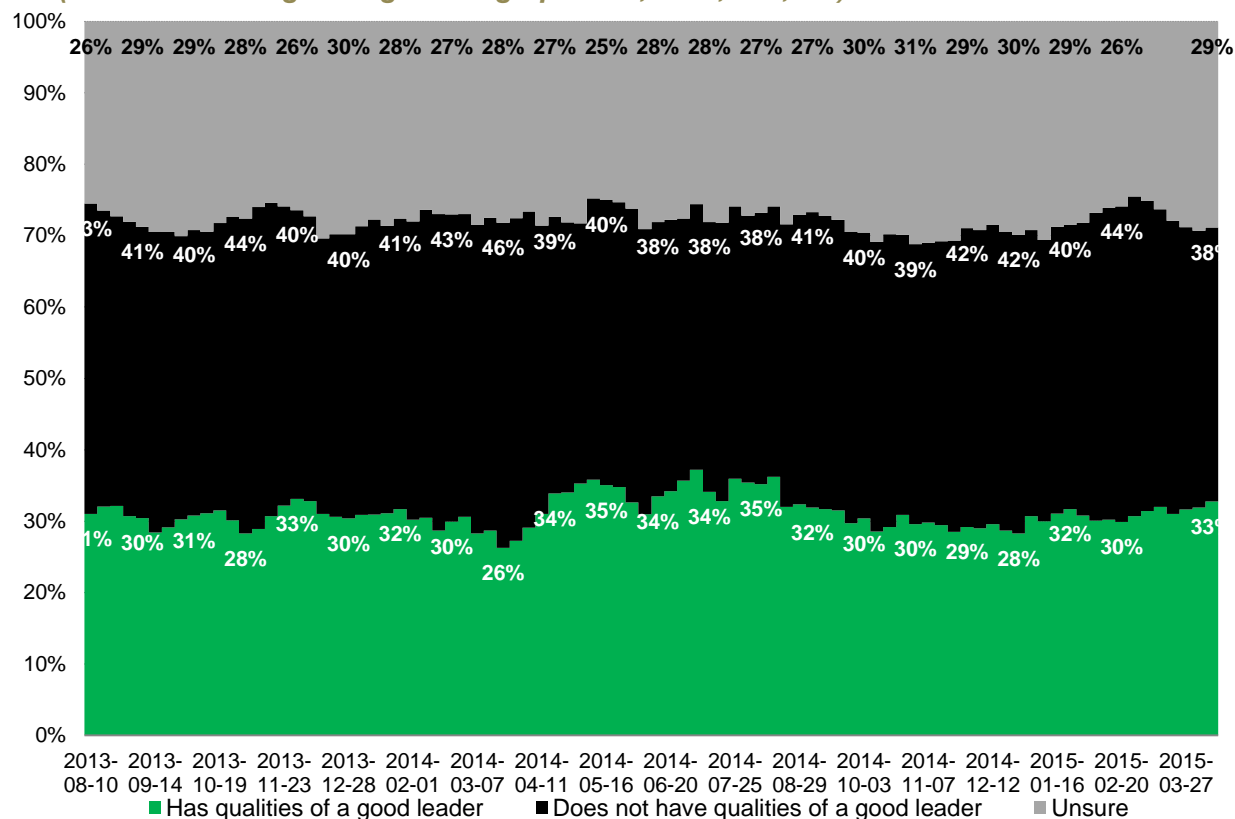
May



Question: For each of the following federal political party leaders, do you think they have or do not have the qualities to be a good political leader? [RANDOMIZE] Elizabeth May

Contact: Nik Nanos
Ottawa: (613) 234-4666 x 237
Washington DC: (202) 697-9924
nnanos@nanosresearch.com

National – Weekly Tracking (Four week rolling average ending April 10th, 2015, n=1,000)





Methodology

Survey Methodology

The Weekly Nanos Party Power Index Tracking is produced by the Nanos Research Corporation, headquartered in Canada, which operates in Canada and the United States. The data is based on random telephone interviews with 1,000 Canadians (land- and cell-lines), using a four week rolling average of 250 respondents each week, 18 years of age and over. The random sample of 1,000 respondents may be weighted by age and gender using the latest census information for Canada. The interviews are compiled into a four week rolling average of 1,000 interviews, where each week the oldest group of 250 interviews is dropped and a new group of 250 interviews is added. The views of 1,000 respondents are compiled into a diffusion brand index for each party that goes from 0 to 100, where 0 means that the party has no brand strength and 100 means it has maximum brand strength. A score above 50 is an indication of brand strength for the party and its leader at this time.

The current report is based on a four week rolling average of Canadian opinion ending April 10th, 2015.

A random telephone survey of 1,000 Canadians is accurate 3.1 percentage points, plus or minus, 19 times out of 20.

About Nanos

Nanos is one of North America's most trusted research and strategy organizations. Our team of professionals is regularly called upon by senior executives to deliver superior intelligence and market advantage whether it be helping to chart a path forward, managing a reputation or brand risk or understanding the trends that drive success. Services range from traditional telephone surveys, through to elite in-depth interviews, online research and focus groups. Nanos clients range from Fortune 500 companies through to leading advocacy groups interested in understanding and shaping the public landscape. Whether it is understanding your brand or reputation, customer needs and satisfaction, engaging employees or testing new ads or products, Nanos provides insight you can trust.



View our brochure

Nik Nanos FMRIA

Chairman, Nanos Research Group
Ottawa (613) 234-4666 ext. 237
Washington DC (202) 697-9924
nnanos@nanosresearch.com