

Weekly Nanos Party Power Index Tracking

Nanos Weekly Tracking, ending February 27, 2015
(released March 4, 2015)



NANOS

*Ideas powered by
world-class data*

Weekly Nanos Party Power Index



Liberals score higher than Conservatives on Nanos Index – Tories and Harper at an 52 week high (Released 03/04/2015)

Although the Liberals still score marginally higher on the Nanos Party Power Index, the Conservatives have reached their highest score since August 2013 and the gap between the Liberals and the Conservatives is the closest since that period at only two points on the 100 point scale. The weekly tracking suggests a seven week positive trajectory for the Tories although they still score lower than the Liberals. The Tory movement has been largely driven by increasingly positive scores in Ontario and Quebec.

The Nanos Party Power Index methodology is comprised of a basket of political goods that includes ballot preferences, accessible voters, preferred PM views and evaluations of the leaders. It is modeled similar to a standard confidence index. It is a random telephone survey conducted with live agents, reaching out to Canadians through a land- and cell-line dual frame sample.

The latest weekly tracking on the Index has the Liberals at 56 points out of a possible 100 points, followed by the Conservatives at 54 points, the NDP at 48 points, the Green Party at 31 points and the BQ at 27 points (QC only).

Harper has hit a new 12 month high on the preferred Prime Minister measure, while Trudeau and Mulcair are near their 12 month average. Asked who they would prefer as PM, Harper was at 34 per cent, followed by Trudeau at 31 per cent, Mulcair at 17 per cent, May at four per cent and 13 per cent were unsure.

Asked a series of independent questions as to whether they would consider or not consider voting for each of the federal parties, 52 per cent of Canadians would consider voting Liberal while 43 per cent would consider voting Conservative, 43 per cent would consider voting NDP and 24 per cent would consider voting for the Greens.

Party Power Index



The Nanos Party Power Index Tracking for Canada is based on a composite of the following public opinion measures: the national ballot, which party individuals would consider voting for, the top two choices for Prime Minister, and whether each party leader has good leadership qualities.

Contact: Nik Nanos

Ottawa: (613) 234-4666 x 237

Washington DC: (202) 697-9924

nnanos@nanosresearch.com

Data Summary

	This Week	Last Week	4 Weeks Ago	3 Months Ago	1 Year Ago (Feb 2014)	12 Month High	12 Month Low	12 Month Average
Canada Party Power Index								
Liberal	56.4	56.8	57.8	55.8	57.5	60.7	54.8	56.9
Conservative	54.0	53.4	52.8	53.1	48.8	54.0	48.4	51.3
NDP	48.3	48.4	49.5	49.5	50.0	52.2	47.4	49.3
Green	30.5	30.2	31.5	31.2	32.6	35.2	30.1	32.1
Bloc	26.6	26.9	26.5	28.1	28.3	29.0	22.9	26.7
Party Consider								
Liberal	51.8%	52.6%	55.2%	56.3%	51.5%	59.7%	48.8%	54.2%
Conservative	42.8%	43.4%	44.7%	43.2%	36.6%	44.7%	36.1%	41.0%
NDP	42.6%	43.6%	45.2%	43.4%	43.0%	47.1%	37.9%	43.5%
Bloc	33.9%	36.7%	31.1%	33.9%	32.4%	36.7%	22.4%	30.3%
Green	24.0%	25.5%	29.7%	25.6%	26.6%	33.1%	22.7%	27.5%
Preferred Prime Minister								
Harper	33.7%	32.7%	31.2%	33.2%	25.2%	33.7%	25.2%	29.9%
Trudeau	30.6%	31.4%	31.4%	29.0%	32.2%	35.8%	26.3%	30.8%
Mulcair	17.0%	16.2%	17.2%	20.3%	19.0%	20.4%	13.7%	17.9%
May	4.1%	4.0%	3.4%	3.1%	4.8%	6.7%	3.0%	4.9%
Beaulieu	1.7%	1.4%	1.0%	0.9%	1.9%	2.8%	0.5%	1.4%
Unsure	12.9%	14.2%	15.8%	13.6%	16.9%	18.1%	11.7%	14.8%

About the Index



Weekly Nanos Party Power Index

Since voters are not actually able to make a choice between elections, it is interesting to think about party strength and support more broadly. The Nanos Party Power Index fills this need by incorporating more information than just current vote preference.

The Nanos Party Power Index is a weekly composite measurement of federal party brands based on four questions about the federal parties and their leadership. The questions include:

- a ballot question that captures the 1st and 2nd vote preferences;
- a measure of whether the respondent would consider voting for the party;
- the 1st and 2nd preferences for Prime Minister of the current federal leaders; and,
- whether the respondent believes each current leader has the quality to be a good leader.

The views of 1,000 respondents are compiled into a diffusion brand index for each party that goes from 0 to 100, where 0 means that the party has no brand strength and 100 means it has maximum brand strength. A score above 50 is an indication of brand strength for the party and its leader at this time.

The important factors in this weekly tracking include the direction of the brand strength or weakness and also the brand strength of one federal party relative to another.

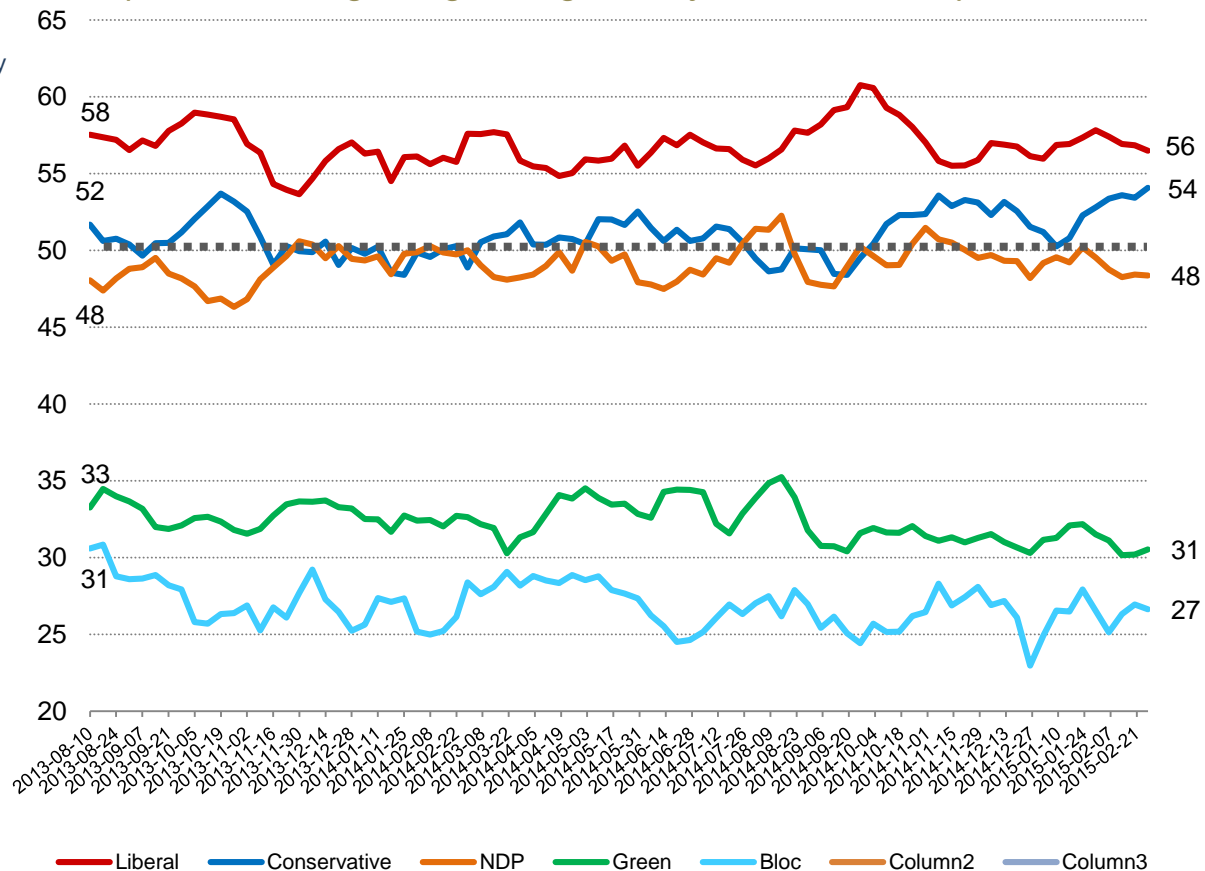
Party Power Index



The Nanos Party Power Index Tracking for Canada is based on a composite of the following public opinion measures: the national ballot, which party individuals would consider voting for, the top two choices for Prime Minister, and whether each party leader has good leadership qualities.

Contact: Nik Nanos
Ottawa: (613) 234-4666 x 237
Washington DC: (202) 697-9924
nnanos@nanosresearch.com

Canada Weekly Index Tracking Scores
(Four week rolling average ending February 27th, 2015, n=1,000)



Party Power Index Tracking by Region

Nanos Weekly Tracking



NANOS

*Expert Counsel to CEOs
and thought leaders*

Party Power Index



The Nanos Party Power Index Tracking for the Atlantic is based on a composite of the following public opinion measures: the national ballot, which party individuals would consider voting for, the top two choices for Prime Minister, and whether each party leader has good leadership qualities. There are wider margins of accuracy for regional subsamples.

Contact: Nik Nanos

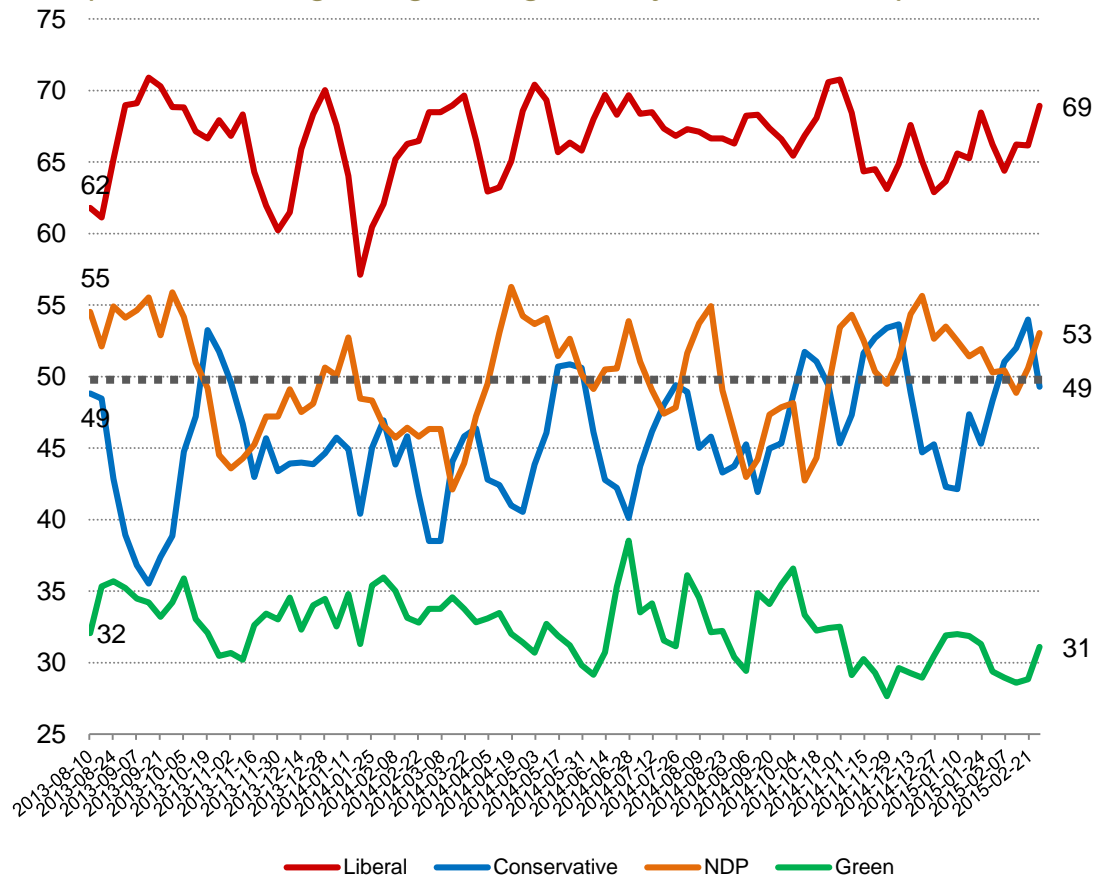
Ottawa: (613) 234-4666 x 237

Washington DC: (202) 697-9924

nnanos@nanosresearch.com

Atlantic Weekly Index Tracking Scores

(Four week rolling average ending February 27th, 2015, n=100)



Party Power Index



The Nanos Party Power Index Tracking for Quebec is based on a composite of the following public opinion measures: the national ballot, which party individuals would consider voting for, the top two choices for Prime Minister, and whether each party leader has good leadership qualities. There are wider margins of accuracy for regional subsamples.

Contact: Nik Nanos

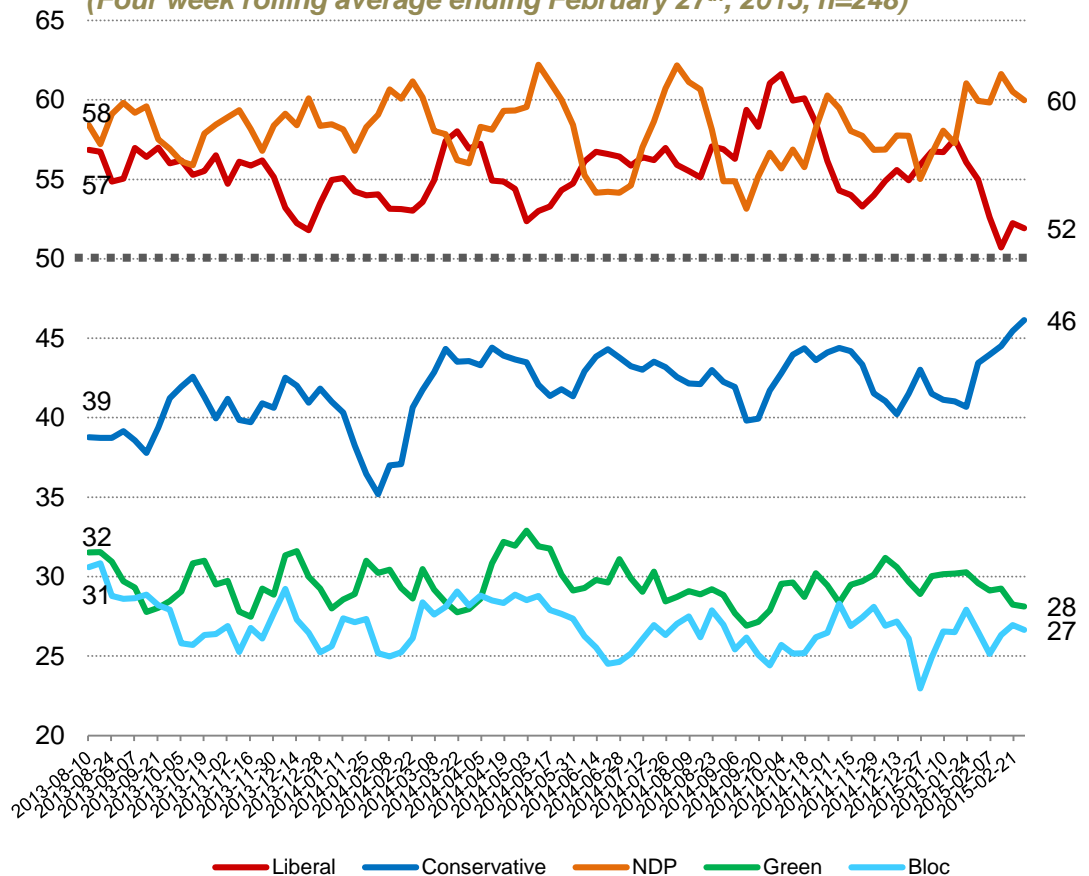
Ottawa: (613) 234-4666 x 237

Washington DC: (202) 697-9924

nnanos@nanosresearch.com

Quebec Weekly Index Tracking Scores

(Four week rolling average ending February 27th, 2015, n=248)



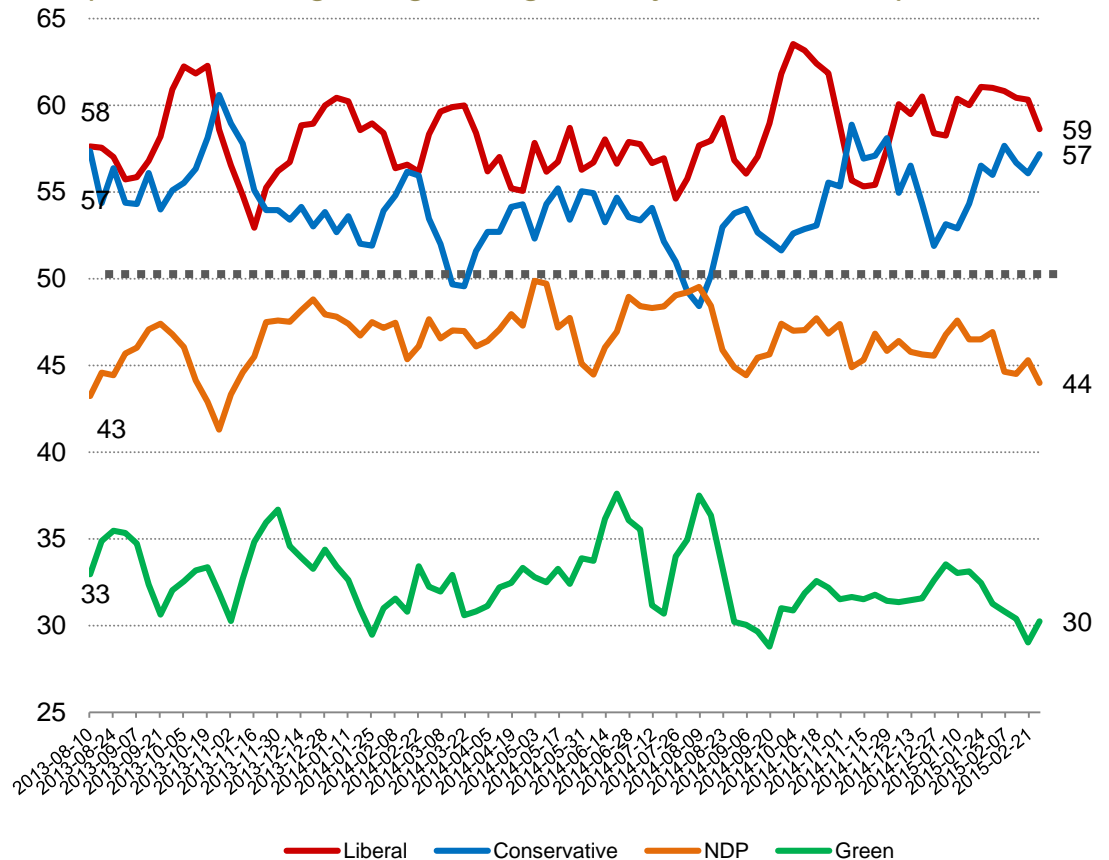
Party Power Index



The Nanos Party Power Index Tracking for Ontario is based on a composite of the following public opinion measures: the national ballot, which party individuals would consider voting for, the top two choices for Prime Minister, and whether each party leader has good leadership qualities. There are wider margins of accuracy for regional subsamples.

Contact: Nik Nanos
Ottawa: (613) 234-4666 x 237
Washington DC: (202) 697-9924
nnanos@nanosresearch.com

Ontario Weekly Index Tracking Scores (Four week rolling average ending February 27th, 2015, n=300)



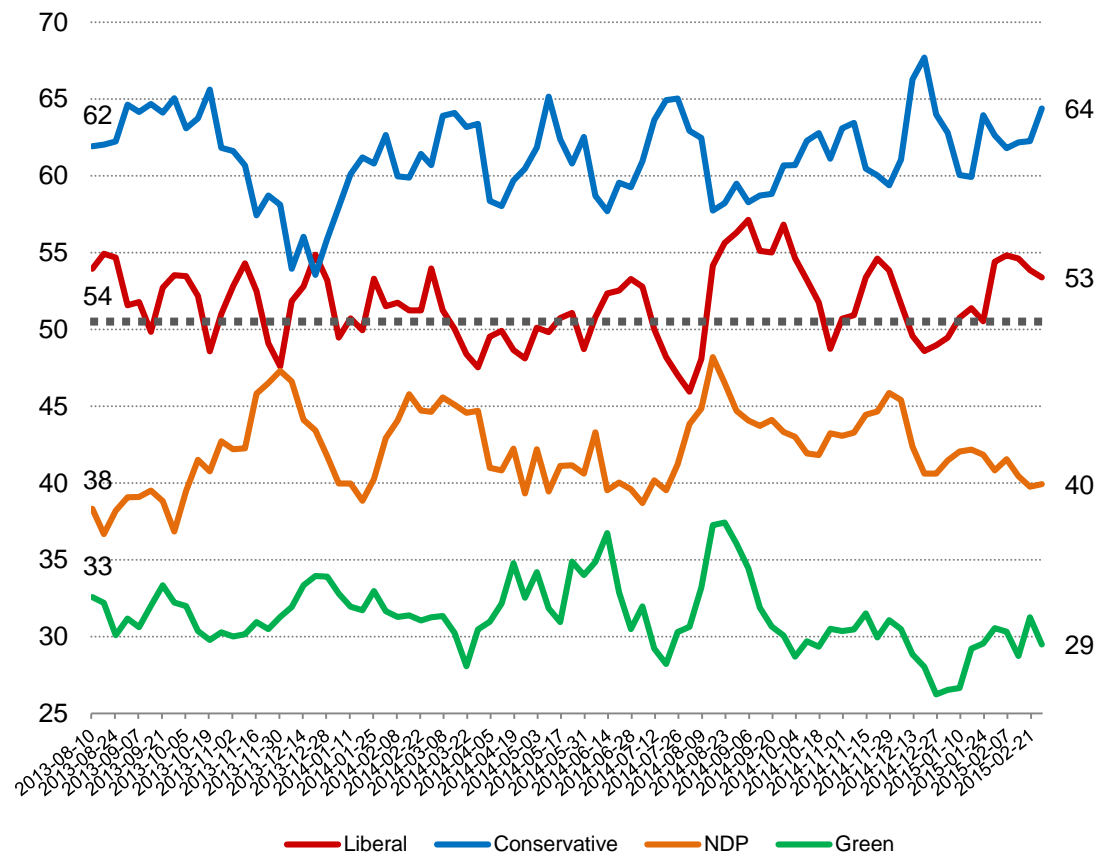
Party Power Index



The Nanos Party Power Index Tracking for the Prairies is based on a composite of the following public opinion measures: the national ballot, which party individuals would consider voting for, the top two choices for Prime Minister, and whether each party leader has good leadership qualities. There are wider margins of accuracy for regional subsamples.

Contact: Nik Nanos
Ottawa: (613) 234-4666 x 237
Washington DC: (202) 697-9924
nnanos@nanosresearch.com

Prairies Weekly Index Tracking Scores
(Four week rolling average ending February 27th, 2015, n=200)



Party Power Index



The Nanos Party Power Index Tracking for BC is based on a composite of the following public opinion measures: the national ballot, which party individuals would consider voting for, the top two choices for Prime Minister, and whether each party leader has good leadership qualities. There are wider margins of accuracy for regional subsamples.

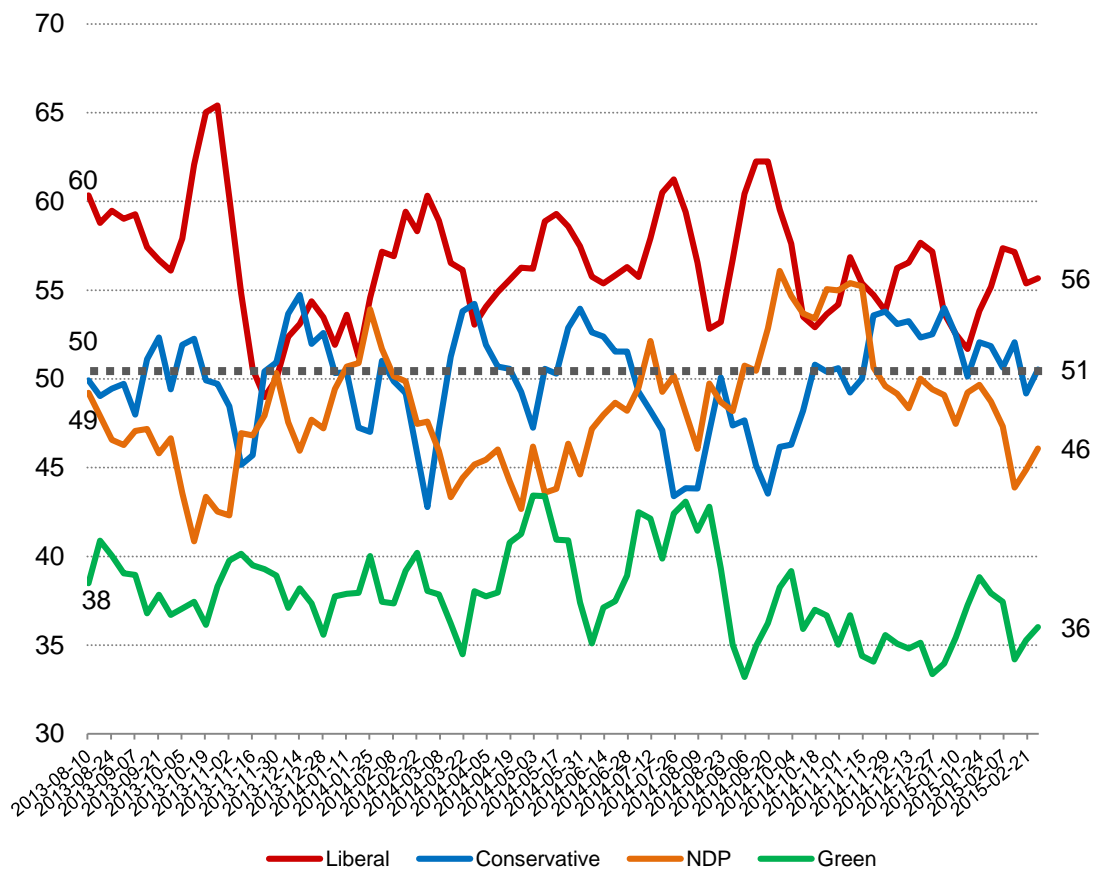
Contact: Nik Nanos

Ottawa: (613) 234-4666 x 237

Washington DC: (202) 697-9924

nnanos@nanosresearch.com

British Columbia Weekly Index Tracking Scores (Four week rolling average ending February 27th, 2015, n=152)



Party Power Index Tracking by Age

Nanos Weekly Tracking



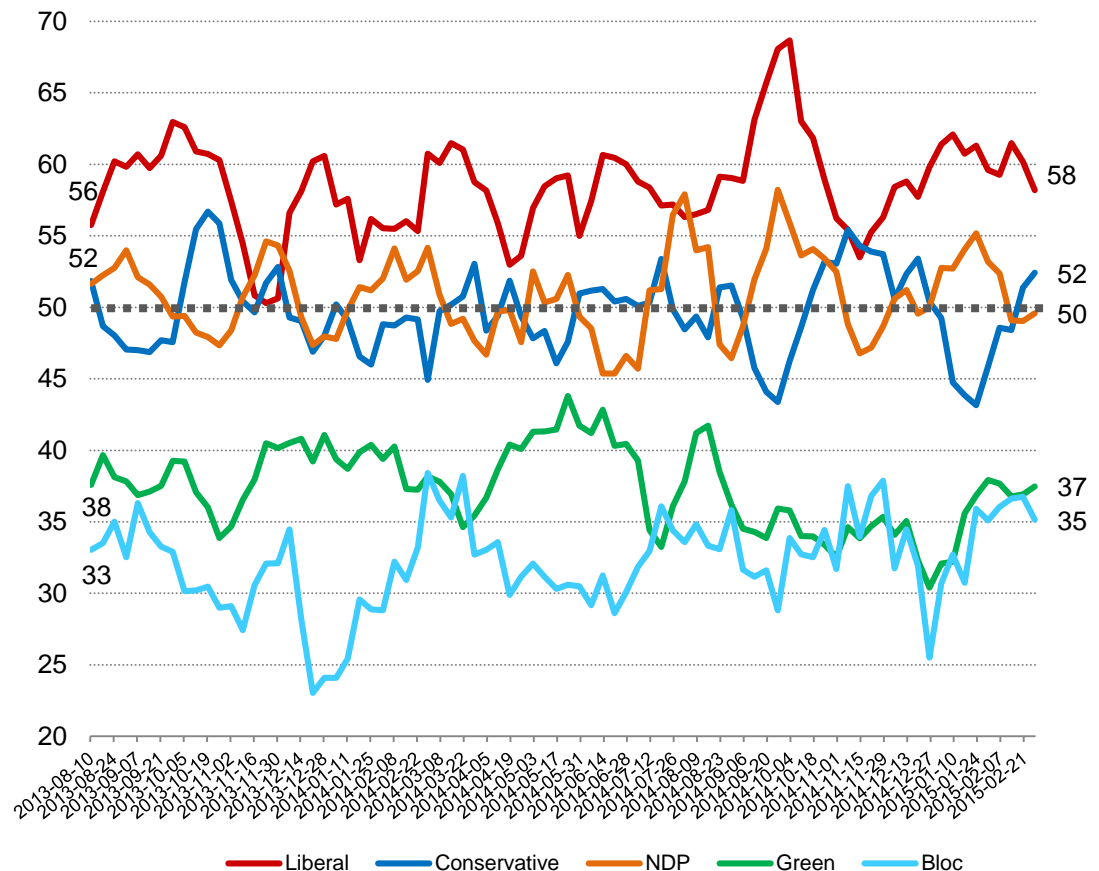
Party Power Index



The Nanos Party Power Index Tracking for the 18 to 29 age group is based on a composite of the following public opinion measures: the national ballot, which party individuals would consider voting for, the top two choices for Prime Minister, and whether each party leader has good leadership qualities. There are wider margins of accuracy for age subsamples.

Contact: Nik Nanos
Ottawa: (613) 234-4666 x 237
Washington DC: (202) 697-9924
nnanos@nanosresearch.com

18 to 29 Weekly Index Tracking Scores (Four week rolling average ending February 27th, 2015, n=205)



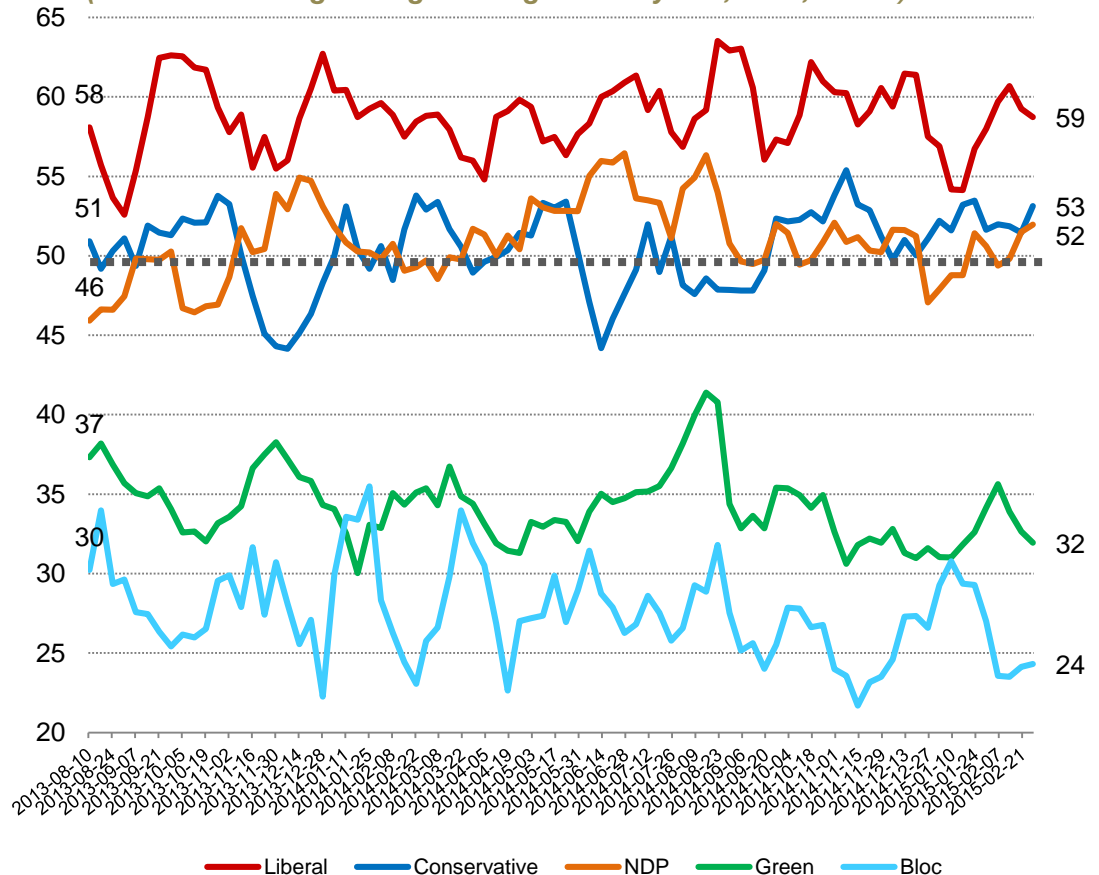
Party Power Index



The Nanos Party Power Index Tracking for the 30 to 39 age group is based on a composite of the following public opinion measures: the national ballot, which party individuals would consider voting for, the top two choices for Prime Minister, and whether each party leader has good leadership qualities. There are wider margins of accuracy for age subsamples.

Contact: Nik Nanos
Ottawa: (613) 234-4666 x 237
Washington DC: (202) 697-9924
nnanos@nanosresearch.com

30 to 39 Weekly Index Tracking Scores (Four week rolling average ending February 27th, 2015, n=169)



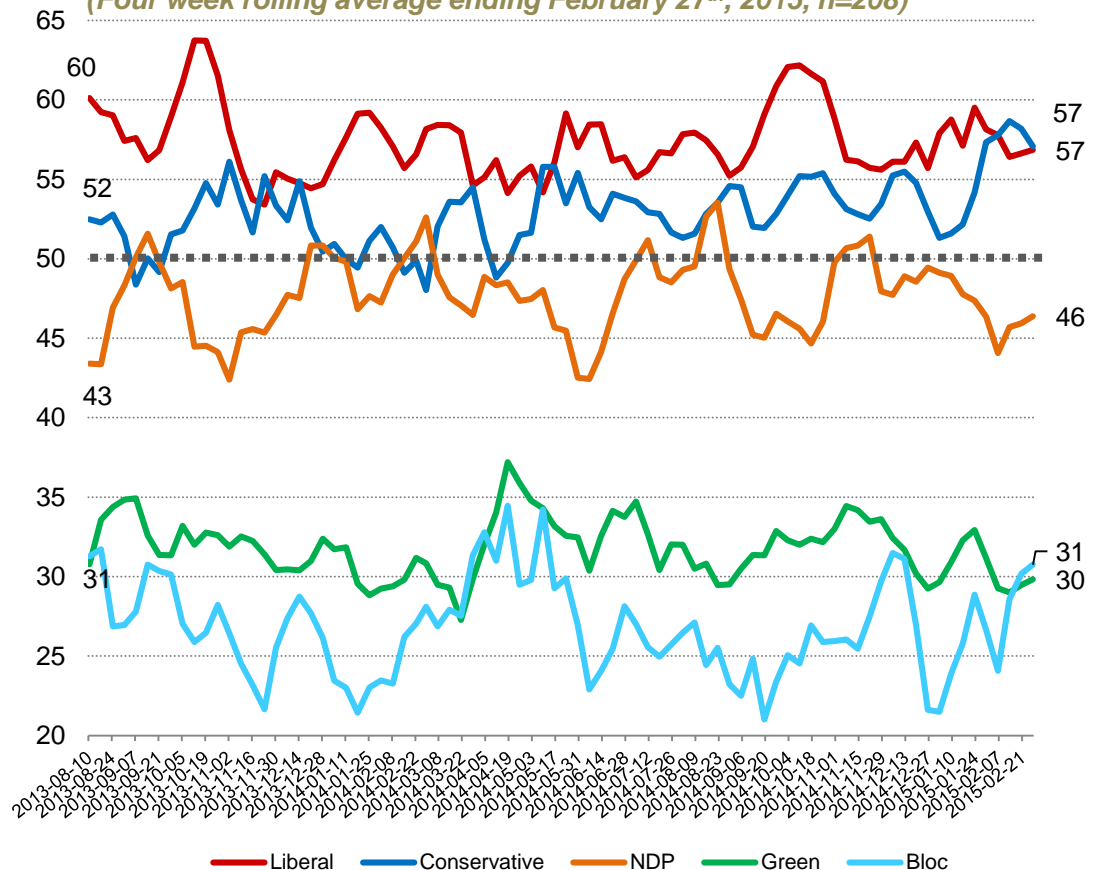
Party Power Index



The Nanos Party Power Index Tracking for the 40 to 49 age group is based on a composite of the following public opinion measures: the national ballot, which party individuals would consider voting for, the top two choices for PM, and whether each party leader has good leadership qualities. There are wider margins of accuracy for age subsamples.

Contact: Nik Nanos
Ottawa: (613) 234-4666 x 237
Washington DC: (202) 697-9924
nnanos@nanosresearch.com

40 to 49 Weekly Index Tracking Scores
(Four week rolling average ending February 27th, 2015, n=208)



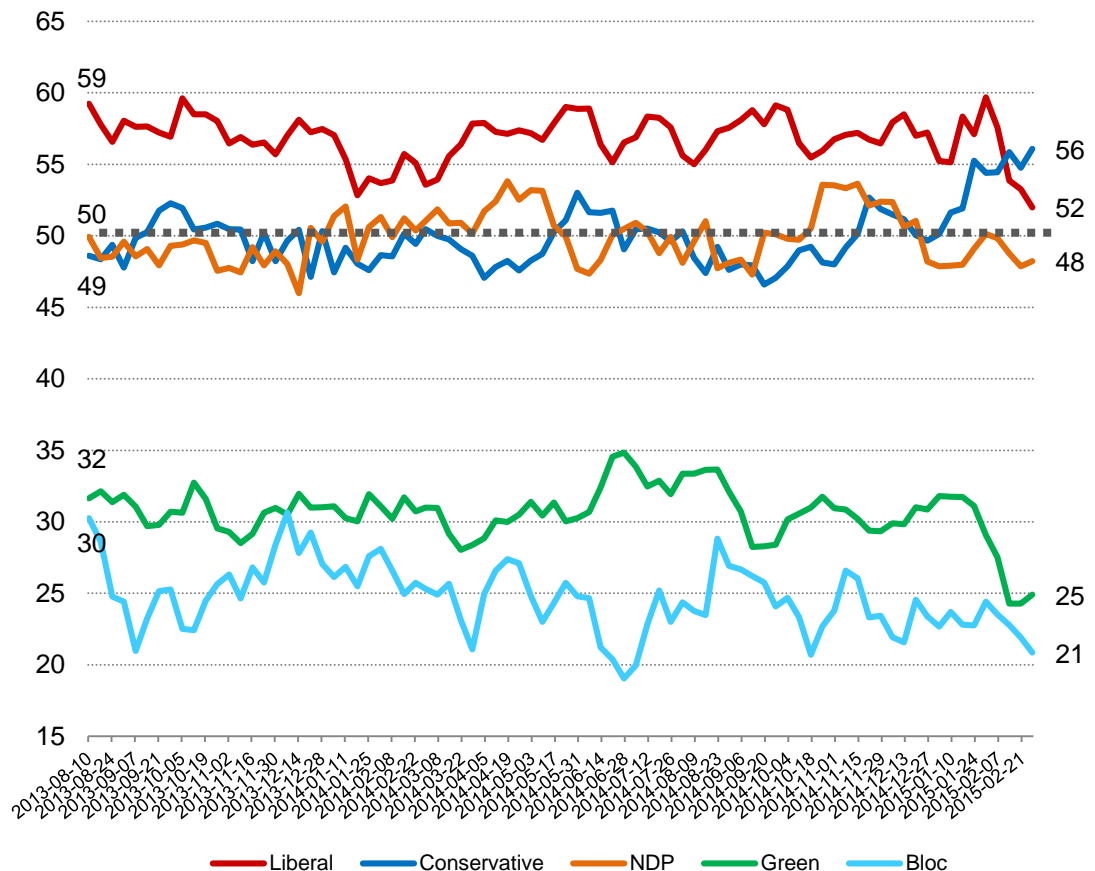
Party Power Index



The Nanos Party Power Index Tracking for the 50 to 59 age group is based on a composite of the following public opinion measures: the national ballot, which party individuals would consider voting for, the top two choices for Prime Minister, and whether each party leader has good leadership qualities. There are wider margins of accuracy for age subsamples.

Contact: Nik Nanos
Ottawa: (613) 234-4666 x 237
Washington DC: (202) 697-9924
nnanos@nanosresearch.com

50 to 59 Weekly Index Tracking Scores
(Four week rolling average ending February 27th, 2015, n=178)



Party Power Index



The Nanos Party Power Index Tracking for the 60 plus age group is based on a composite of the following public opinion measures: the national ballot, which party individuals would consider voting for, the top two choices for Prime Minister, and whether each party leader has good leadership qualities. There are wider margins of accuracy for age subsamples.

Contact: Nik Nanos

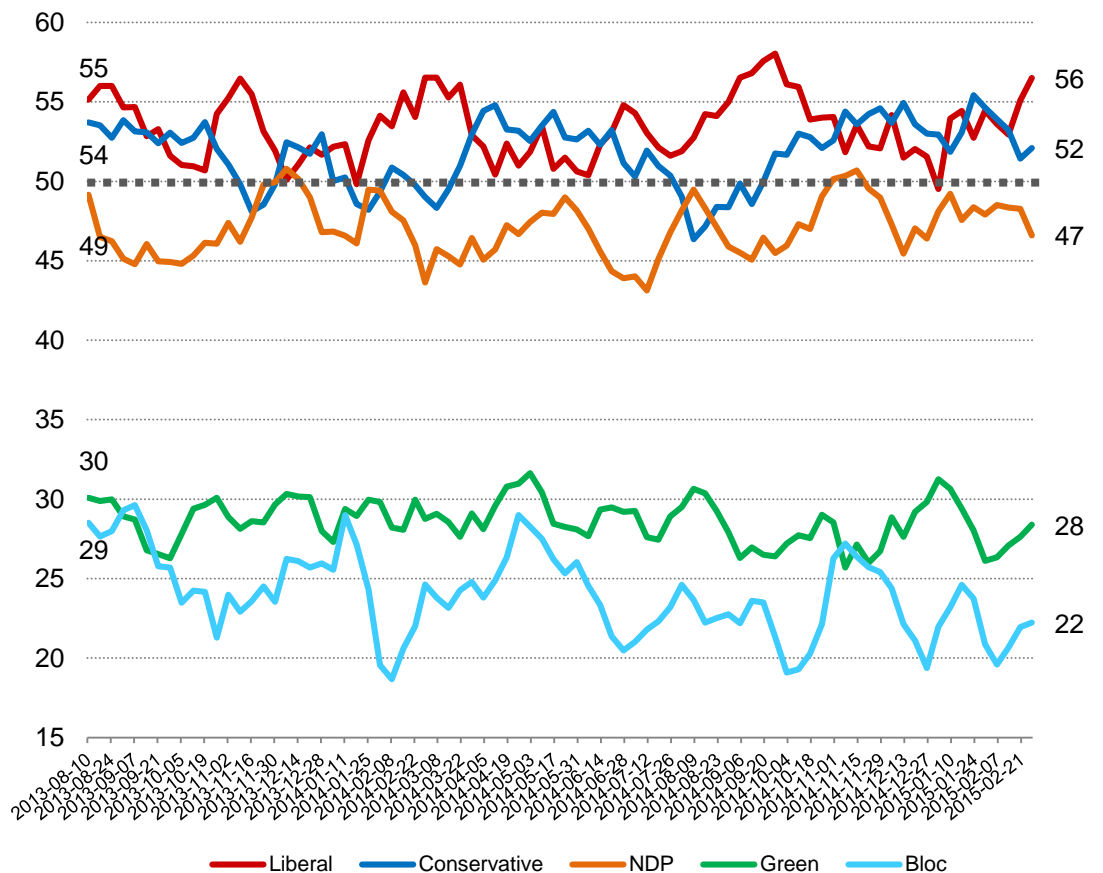
Ottawa: (613) 234-4666 x 237

Washington DC: (202) 697-9924

nnanos@nanosresearch.com

60 plus Weekly Index Tracking Scores

(Four week rolling average ending February 27th, 2015, n=239)



Party Power Index Tracking by Gender

Nanos Weekly Tracking



Party Power Index



The Nanos Party Power Index Tracking for males is based on a composite of the following public opinion measures: the national ballot, which party individuals would consider voting for, the top two choices for Prime Minister, and whether each party leader has good leadership qualities. There are wider margins of accuracy for gender subsamples.

Contact: Nik Nanos

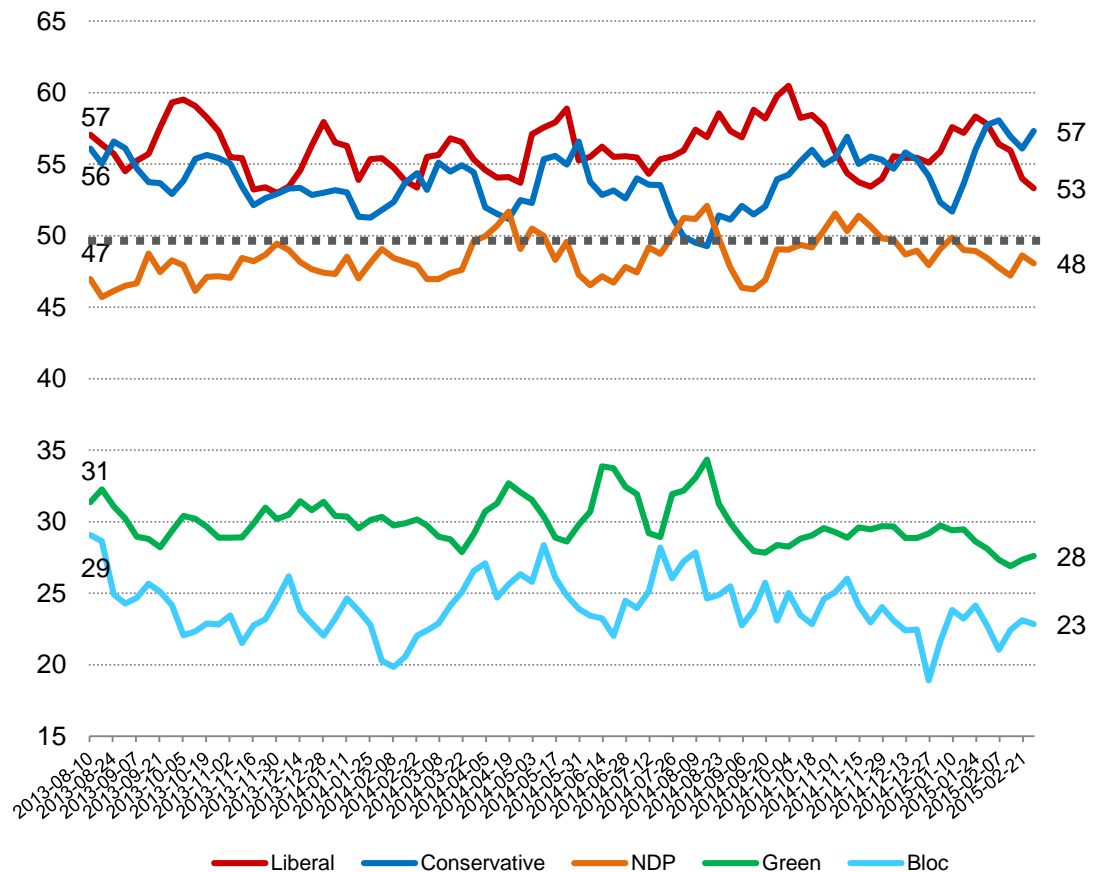
Ottawa: (613) 234-4666 x 237

Washington DC: (202) 697-9924

nnanos@nanosresearch.com

Male Weekly Index Tracking Scores

(Four week rolling average ending February 27th, 2015, n=494)



Party Power Index



The Nanos Party Power Index Tracking for females is based on a composite of the following public opinion measures: the national ballot, which party individuals would consider voting for, the top two choices for Prime Minister, and whether each party leader has good leadership qualities. There are wider margins of accuracy for gender subsamples.

Contact: Nik Nanos

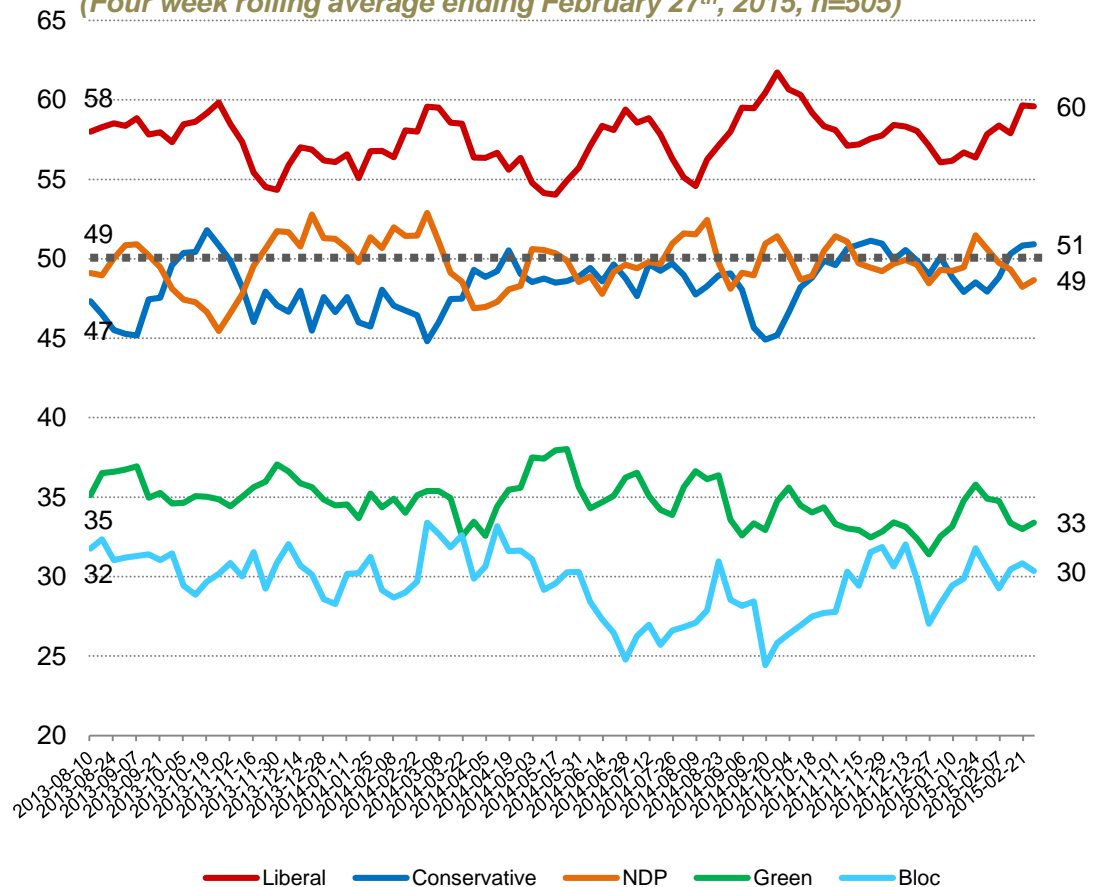
Ottawa: (613) 234-4666 x 237

Washington DC: (202) 697-9924

nnanos@nanosresearch.com

Female Weekly Index Tracking Scores

(Four week rolling average ending February 27th, 2015, n=505)



National Political Tracking Numbers

Nanos Weekly Tracking



NANOS

*A proven track
record of accuracy*

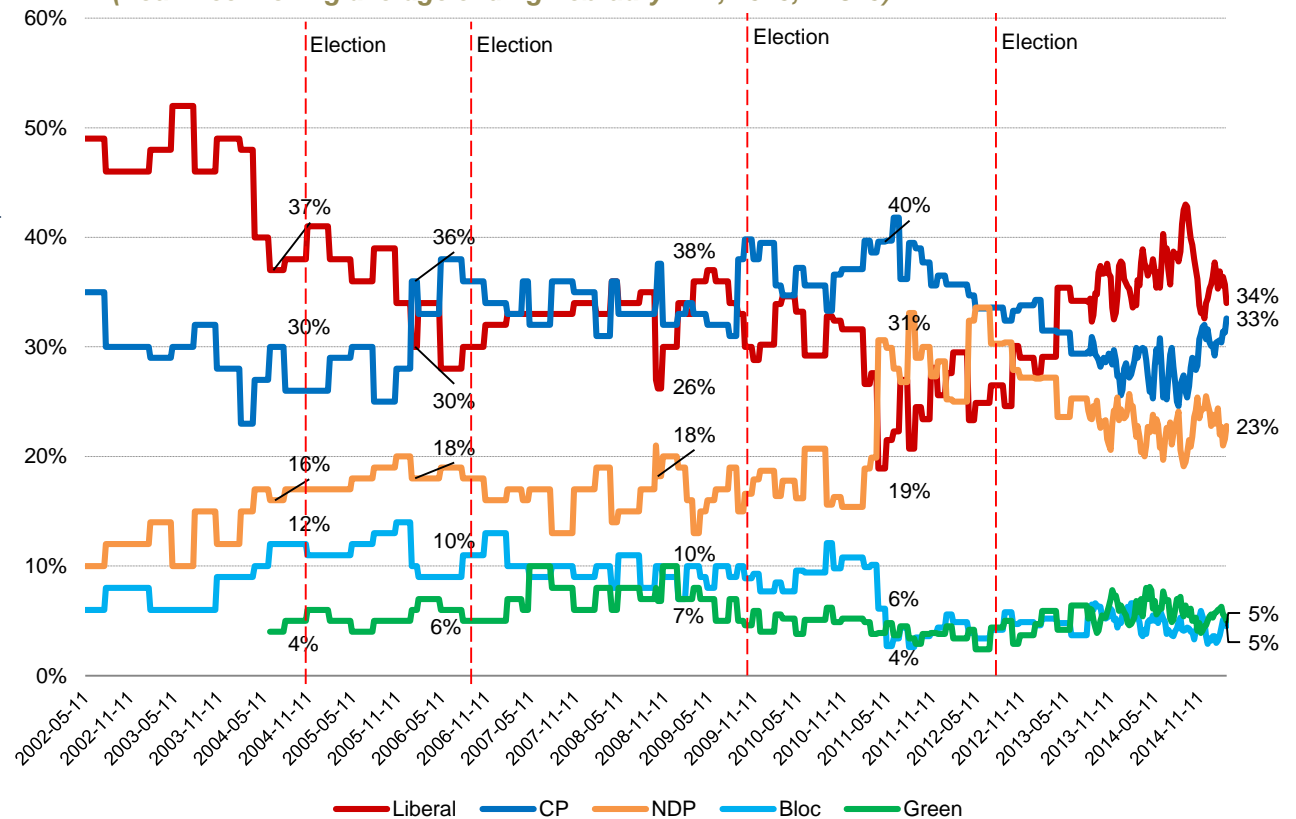
National Ballot



Question: For those parties you would consider voting for federally, could you please rank your top two current local preferences?

Contact: Nik Nanos
Ottawa: (613) 234-4666 x 237
Washington DC: (202) 697-9924
nnanos@nanosresearch.com

Weekly Tracking – First Ranked Choice
(Four week rolling average ending February 27th, 2015, n=840)



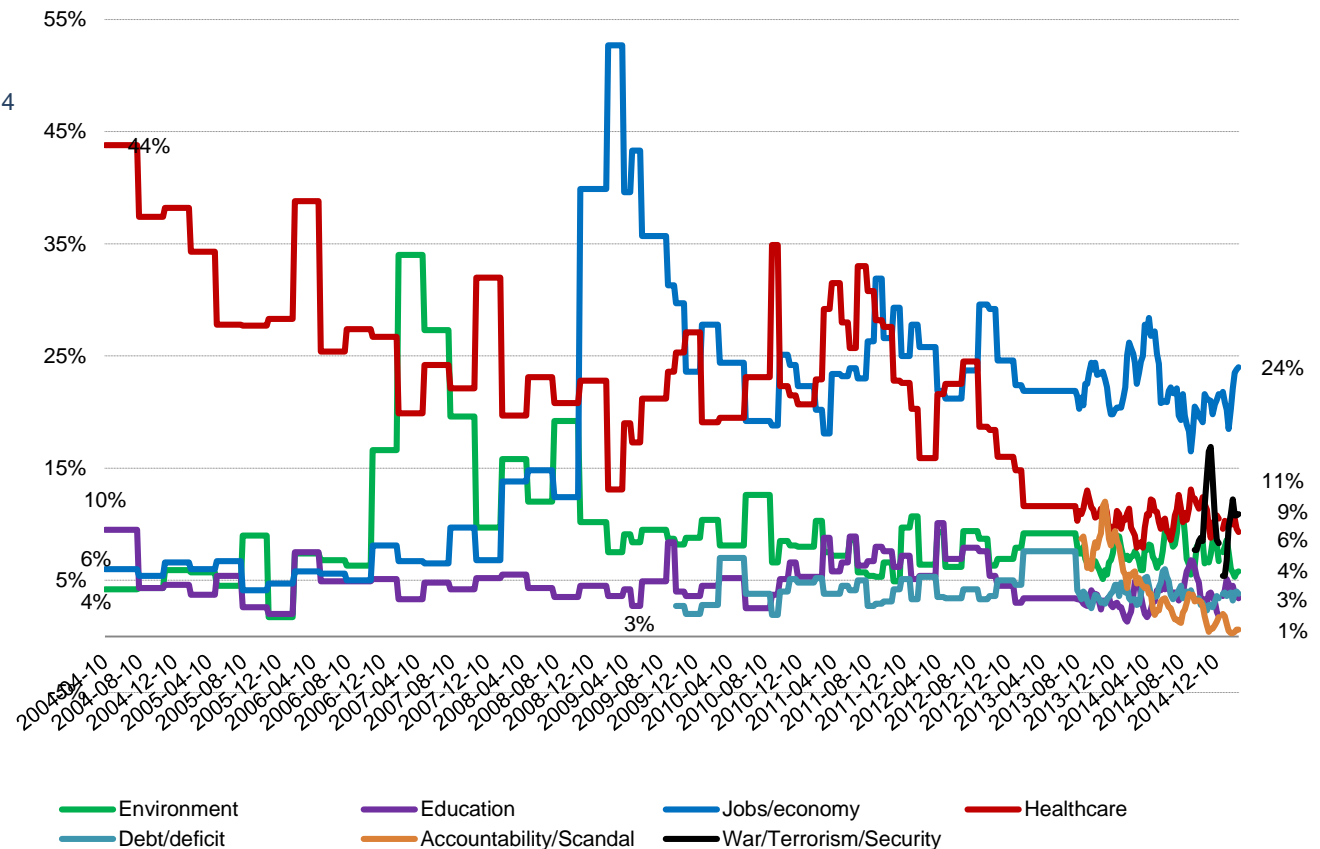
National Issue



Question: What is your most important NATIONAL issue of concern?

Contact: Nik Nanos
Ottawa: (613) 234-4666 x 237
Washington DC: (202) 697-9924
nnanos@nanosresearch.com

Weekly Tracking (Four week rolling average ending February 27th, 2015, n=1,000)



Federal Party Accessible Voters

Nanos Weekly Tracking



*A proven track
record of accuracy*

Consider Conservative

Question: For each of the following federal political parties, please tell me if you would consider or not consider voting for it.
[RANDOMIZE] Conservative Party

Contact: Nik Nanos

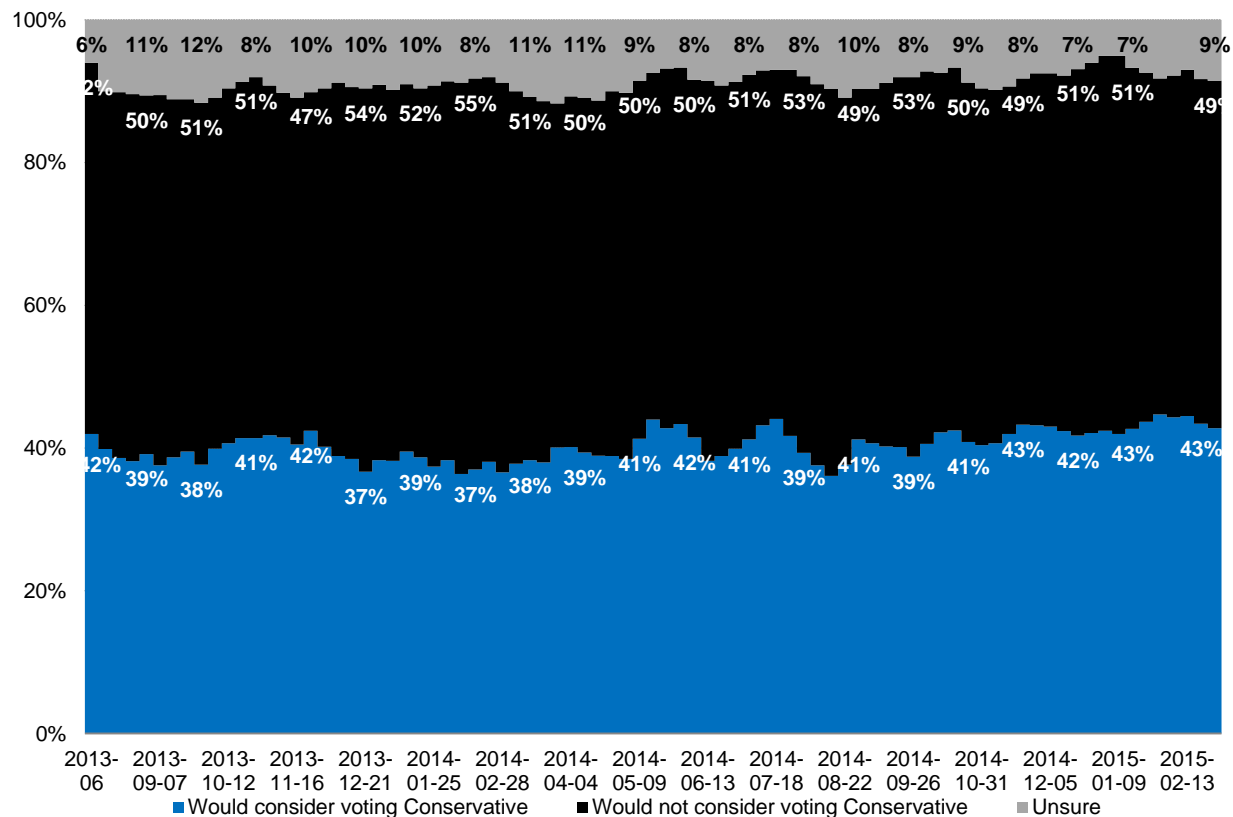
Ottawa: (613) 234-4666 x 237

Washington DC: (202) 697-9924

nnanos@nanosresearch.com

National – Weekly Tracking

(Four week rolling average ending February 27th, 2015, n=1,000)



Consider NDP

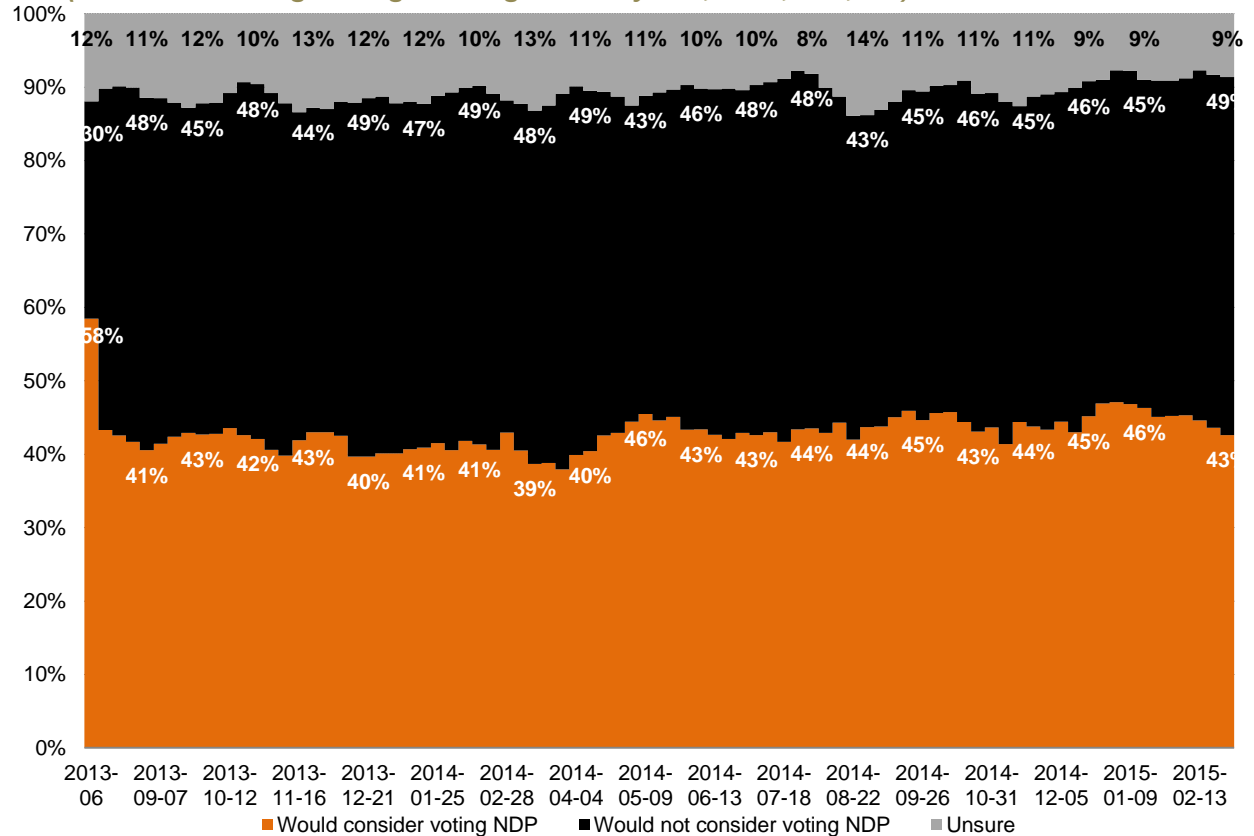


Question: For each of the following federal political parties, please tell me if you would consider or not consider voting for it.
[RANDOMIZE] NDP

Contact: Nik Nanos
Ottawa: (613) 234-4666 x 237
Washington DC: (202) 697-9924
nnanos@nanosresearch.com

National – Weekly Tracking

(Four week rolling average ending February 27th, 2015, n=1,000)



Consider Liberal

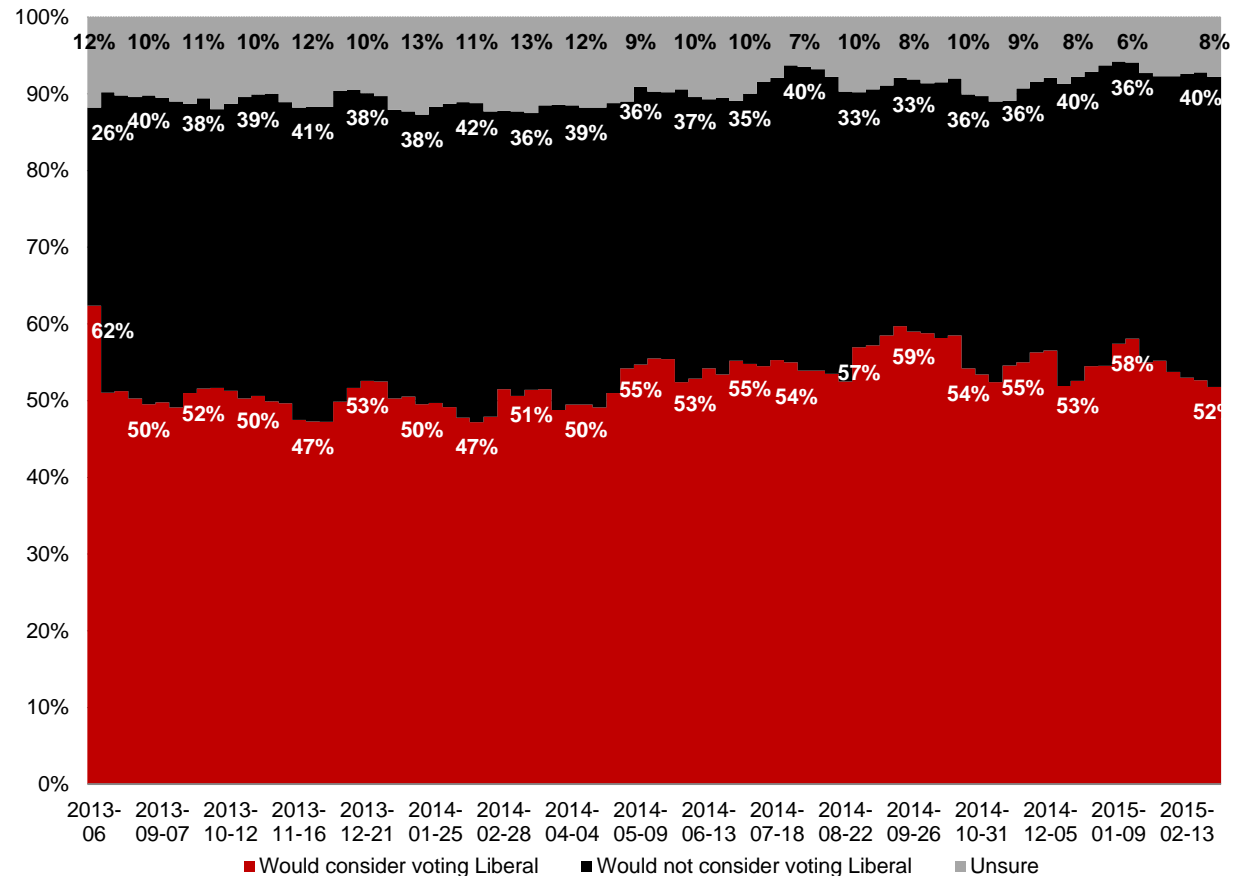


Question: For each of the following federal political parties, please tell me if you would consider or not consider voting for it.
[RANDOMIZE] Liberal Party

Contact: Nik Nanos
Ottawa: (613) 234-4666 x 237
Washington DC: (202) 697-9924
nnanos@nanosresearch.com

National – Weekly Tracking

(Four week rolling average ending February 27th, 2015, n=1,000)



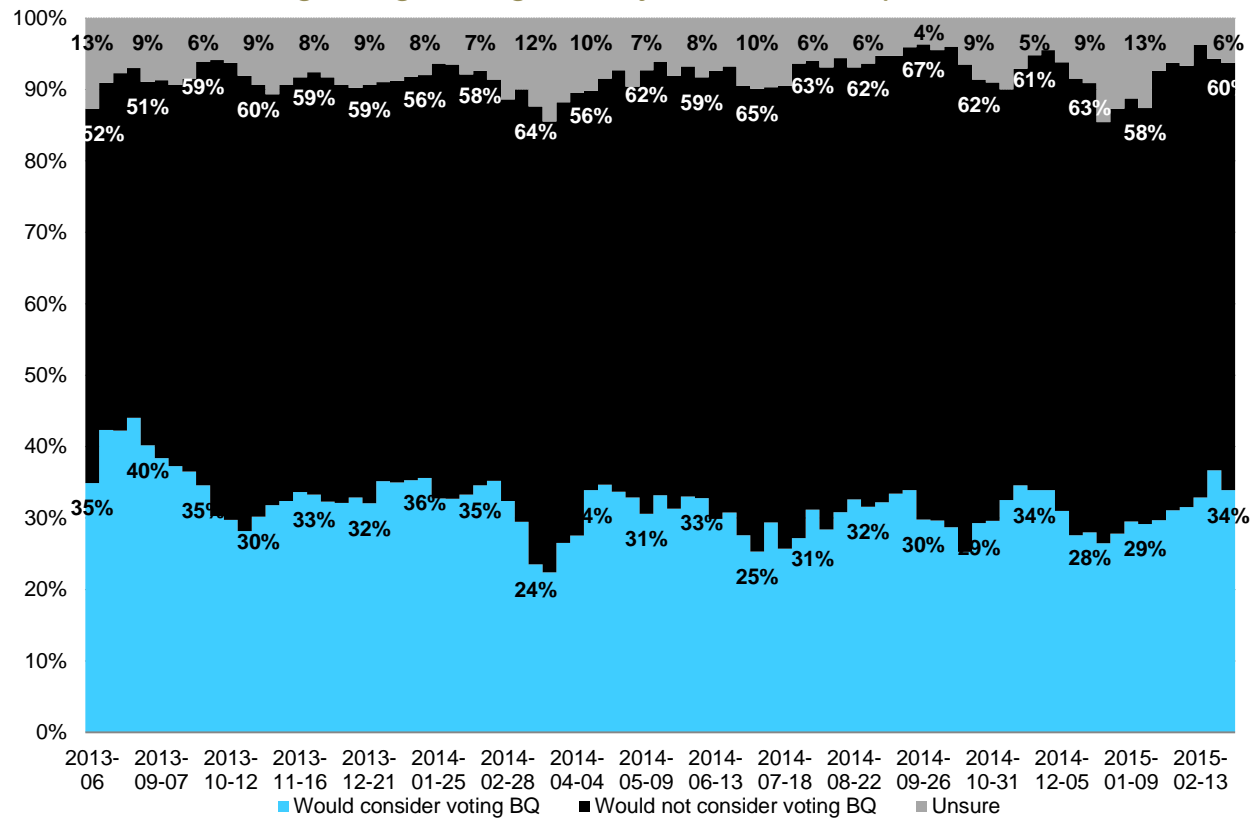
Consider Bloc



Question: For each of the following federal political parties, please tell me if you would consider or not consider voting for it. [RANDOMIZE] Bloc Québécois

Contact: Nik Nanos
Ottawa: (613) 234-4666 x 237
Washington DC: (202) 697-9924
nnanos@nanosresearch.com

Quebec only – Weekly Tracking
Four week rolling average ending February 27th, 2015, n=248)



Consider Green

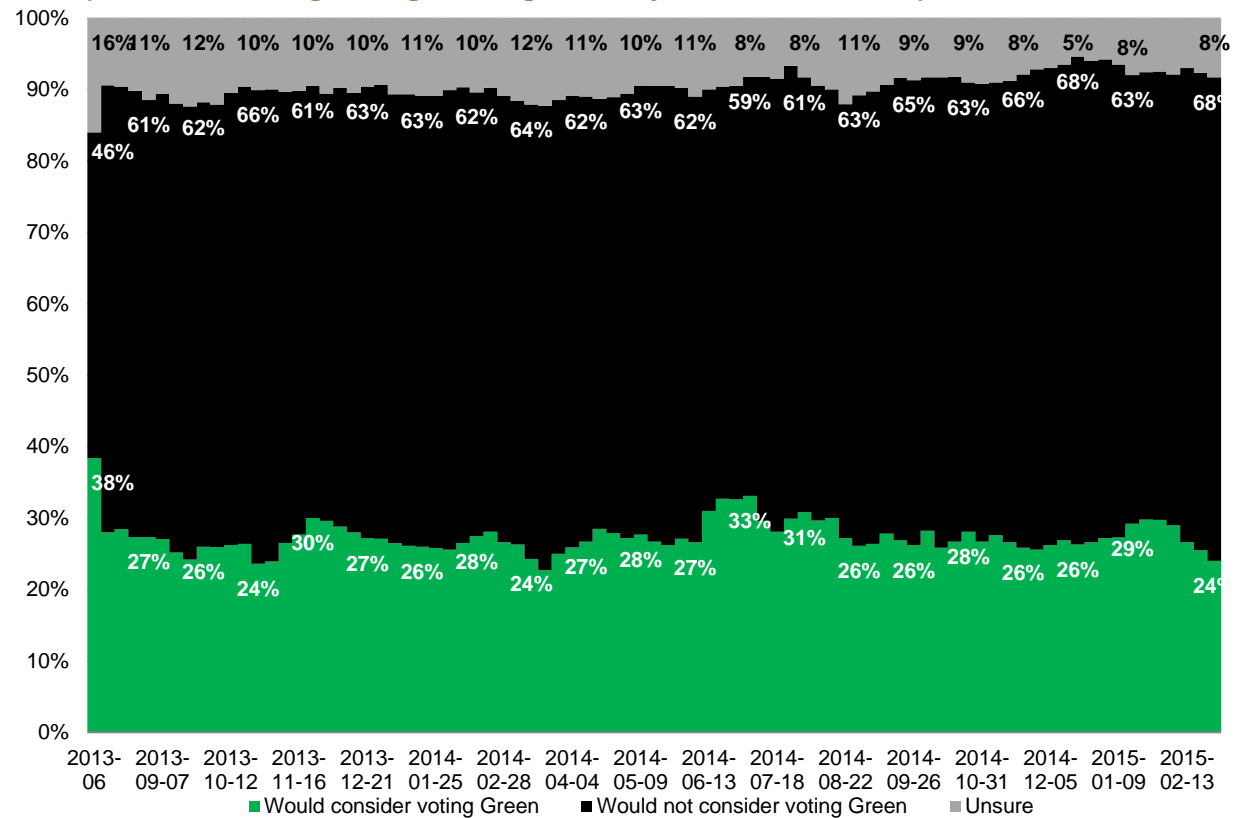


Question: For each of the following federal political parties, please tell me if you would consider or not consider voting for it.
[RANDOMIZE] Green Party

Contact: Nik Nanos
Ottawa: (613) 234-4666 x 237
Washington DC: (202) 697-9924
nnanos@nanosresearch.com

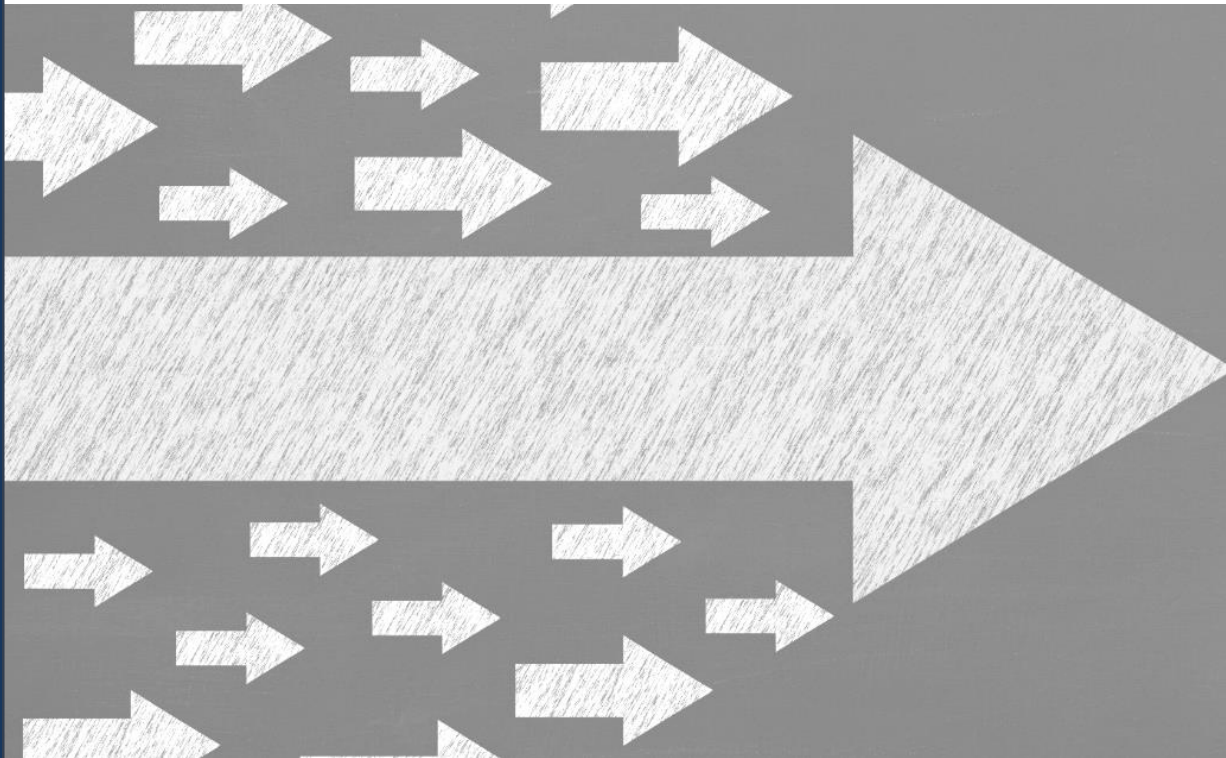
National – Weekly Tracking

(Four week rolling average ending February 27th, 2015, n=1,000)



Tracking on the Federal Political Leaders

Nanos Weekly Tracking



NANOS

*Winning solutions
for decision-makers*

Prime Minister



Question: Of the current federal political party leaders, could you please rank your top two current local preferences for Prime Minister? [ROTATE PARTY LEADERS]

Contact: Nik Nanos

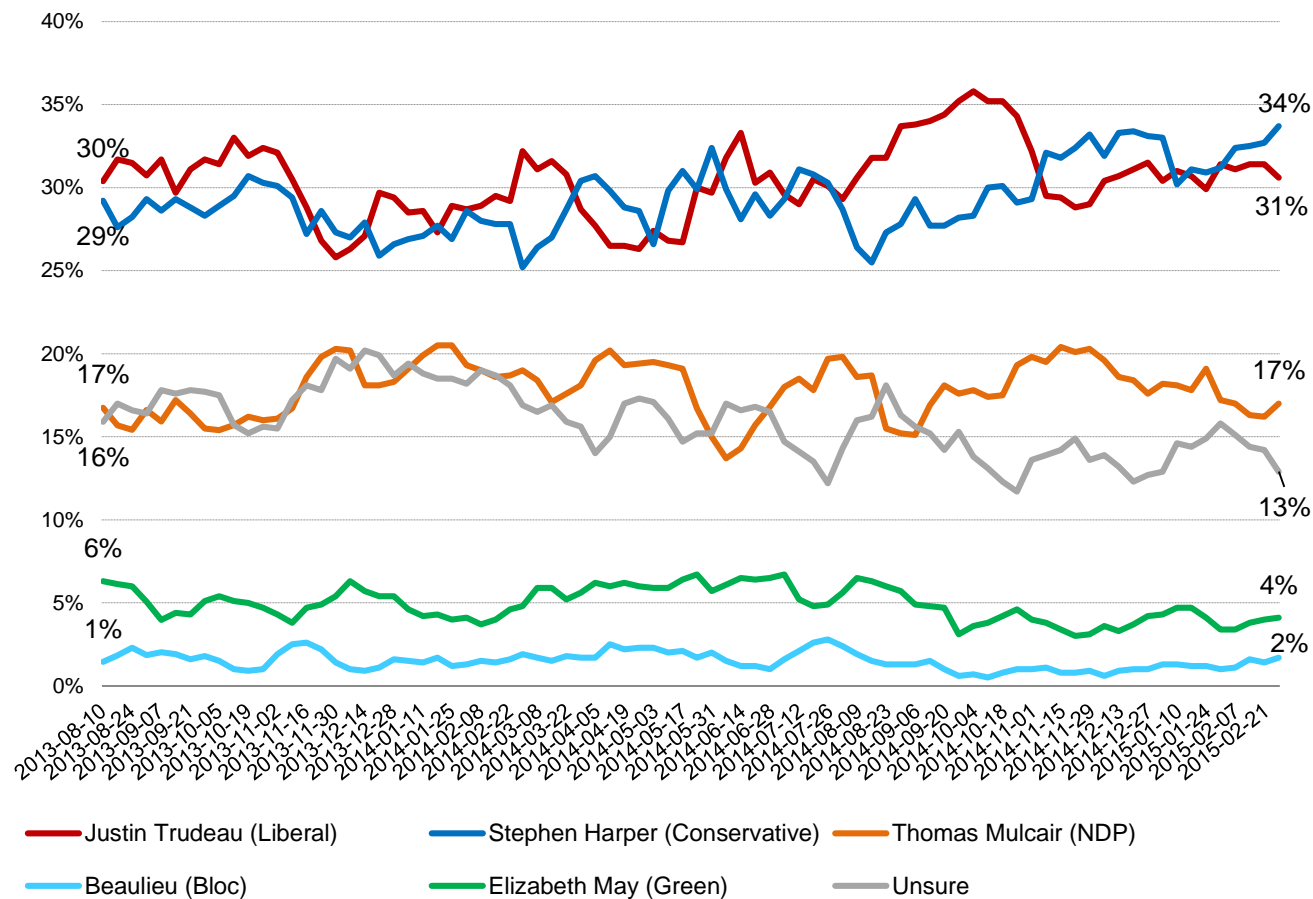
Ottawa: (613) 234-4666 x 237

Washington DC: (202) 697-9924

nnanos@nanosresearch.com

National – Weekly Tracking – First Ranked Choice

(Four week rolling average ending February 27th, 2015, n=1,000)



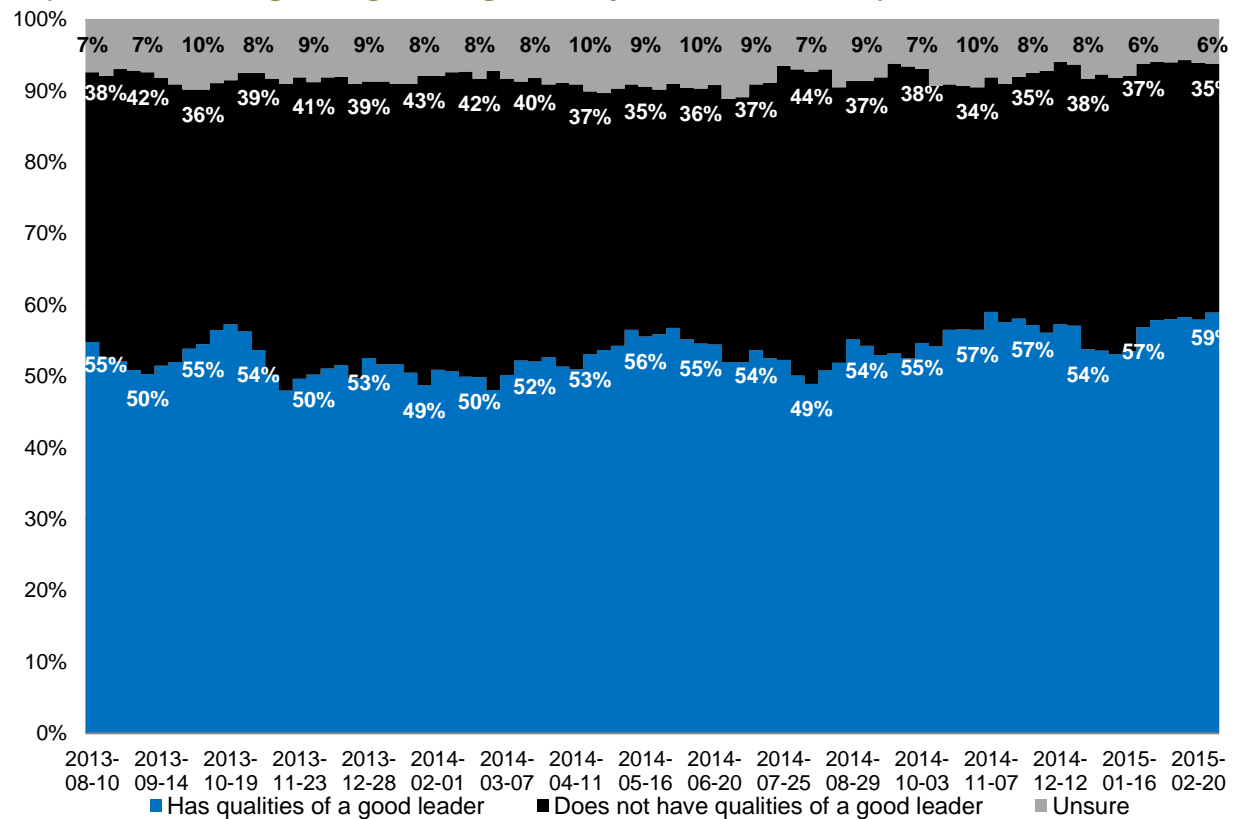
Harper



Question: For each of the following federal political party leaders, do you think they have or do not have the qualities to be a good political leader? [RANDOMIZE] Stephen Harper

Contact: Nik Nanos
Ottawa: (613) 234-4666 x 237
Washington DC: (202) 697-9924
nnanos@nanosresearch.com

National – Weekly Tracking (Four week rolling average ending February 27th, 2015, n=1,000)



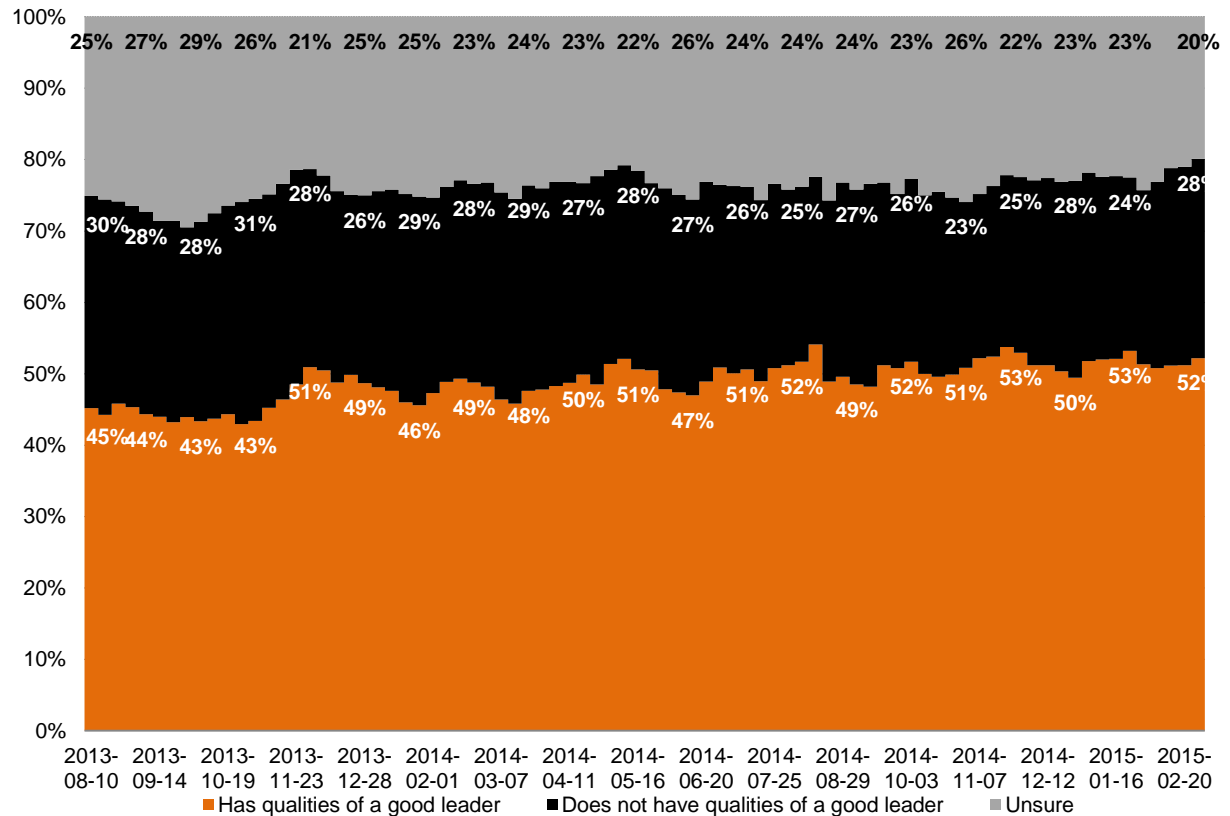
Mulcair



Question: For each of the following federal political party leaders, do you think they have or do not have the qualities to be a good political leader? [RANDOMIZE] Thomas Mulcair

Contact: Nik Nanos
Ottawa: (613) 234-4666 x 237
Washington DC: (202) 697-9924
nnanos@nanosresearch.com

National – Weekly Tracking (Four week rolling average ending February 27th, 2015, n=1,000)



Trudeau



Question: For each of the following federal political party leaders, do you think they have or do not have the qualities to be a good political leader? [RANDOMIZE] Justin Trudeau

Contact: Nik Nanos

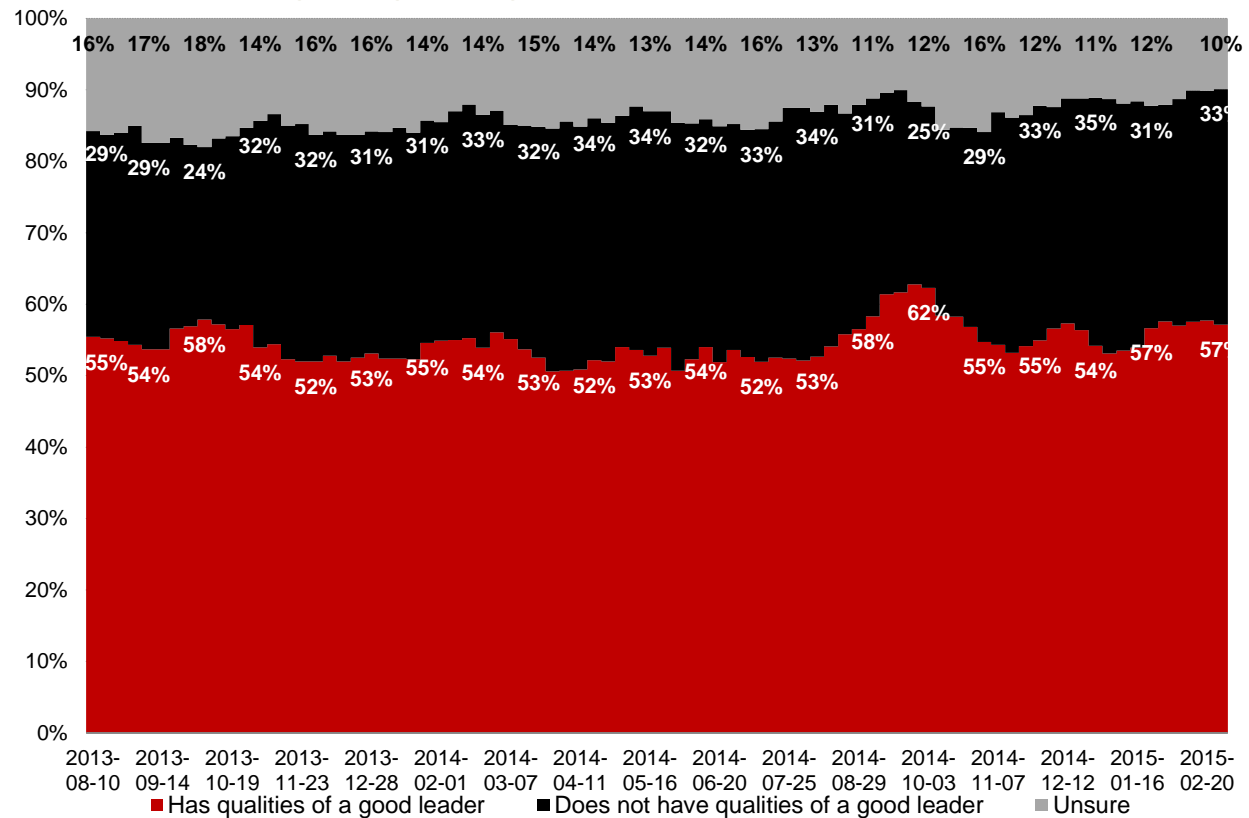
Ottawa: (613) 234-4666 x 237

Washington DC: (202) 697-9924

nnanos@nanosresearch.com

National – Weekly Tracking

(Four week rolling average ending February 27th, 2015, n=1,000)



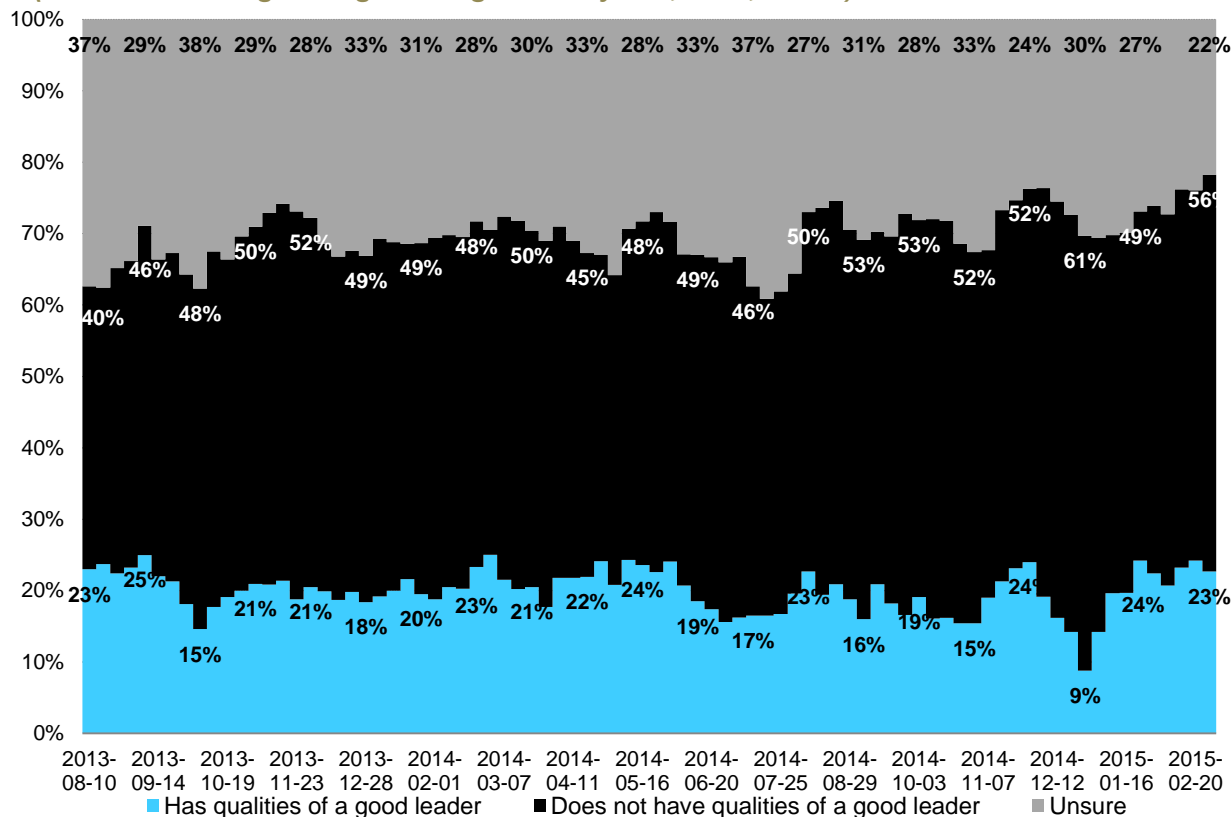
Beaulieu



Question: For each of the following federal political party leaders, do you think they have or do not have the qualities to be a good political leader? [RANDOMIZE] Mario Beaulieu

Contact: Nik Nanos
Ottawa: (613) 234-4666 x 237
Washington DC: (202) 697-9924
nnanos@nanosresearch.com

Quebec only – Weekly Tracking (Four week rolling average ending February 27th, 2015, n=248)



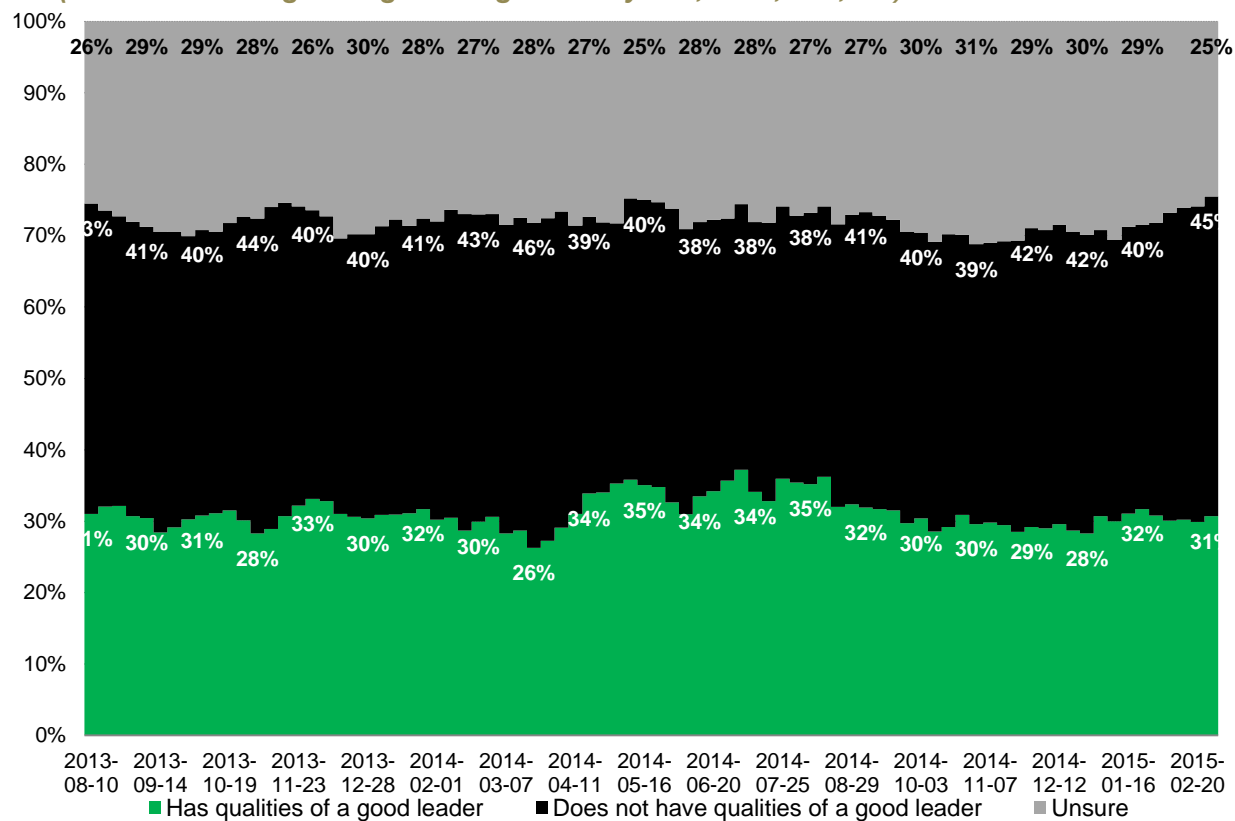
May



Question: For each of the following federal political party leaders, do you think they have or do not have the qualities to be a good political leader? [RANDOMIZE] Elizabeth May

Contact: Nik Nanos
Ottawa: (613) 234-4666 x 237
Washington DC: (202) 697-9924
nnanos@nanosresearch.com

National – Weekly Tracking (Four week rolling average ending February 27th, 2015, n=1,000)





Methodology

Survey Methodology

The Weekly Nanos Party Power Index Tracking is produced by the Nanos Research Corporation, headquartered in Canada, which operates in Canada and the United States. The data is based on random telephone interviews with 1,000 Canadians (land- and cell-lines), using a four week rolling average of 250 respondents each week, 18 years of age and over. The random sample of 1,000 respondents may be weighted by age and gender using the latest census information for Canada. The interviews are compiled into a four week rolling average of 1,000 interviews, where each week the oldest group of 250 interviews is dropped and a new group of 250 interviews is added. The views of 1,000 respondents are compiled into a diffusion brand index for each party that goes from 0 to 100, where 0 means that the party has no brand strength and 100 means it has maximum brand strength. A score above 50 is an indication of brand strength for the party and its leader at this time.

The current report is based on a four week rolling average of Canadian opinion ending February 27th, 2015.

A random telephone survey of 1,000 Canadians is accurate 3.1 percentage points, plus or minus, 19 times out of 20.

About Nanos

Nanos is one of North America's most trusted research and strategy organizations. Our team of professionals is regularly called upon by senior executives to deliver superior intelligence and market advantage whether it be helping to chart a path forward, managing a reputation or brand risk or understanding the trends that drive success. Services range from traditional telephone surveys, through to elite in-depth interviews, online research and focus groups. Nanos clients range from Fortune 500 companies through to leading advocacy groups interested in understanding and shaping the public landscape. Whether it is understanding your brand or reputation, customer needs and satisfaction, engaging employees or testing new ads or products, Nanos provides insight you can trust.



View our brochure

Nik Nanos FMRIA

Chairman, Nanos Research Group
Ottawa (613) 234-4666 ext. 237
Washington DC (202) 697-9924
nnanos@nanosresearch.com